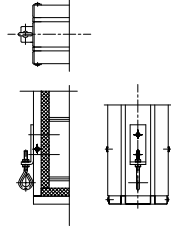
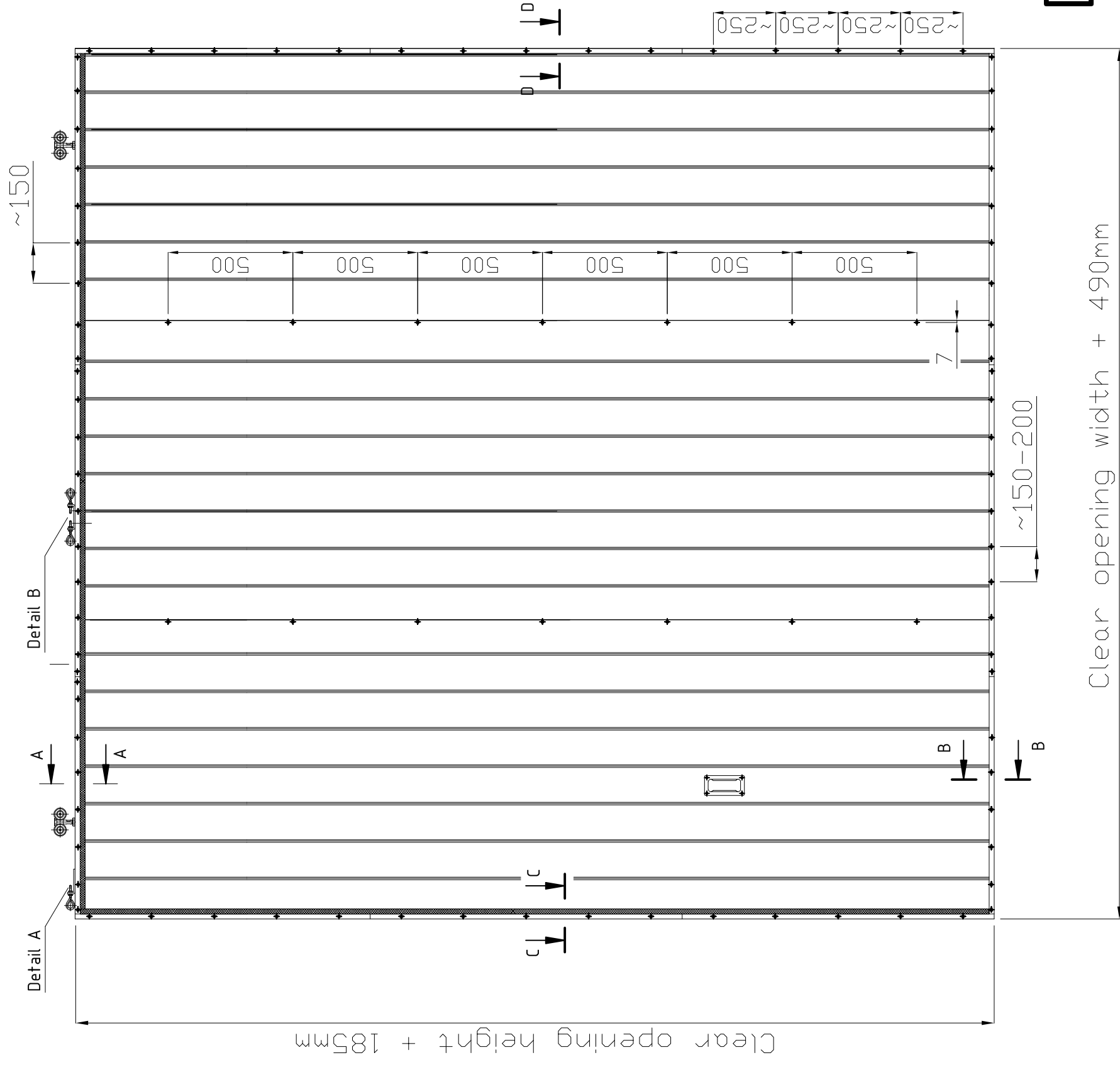
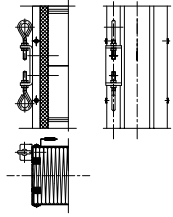


Detail A



Detail B

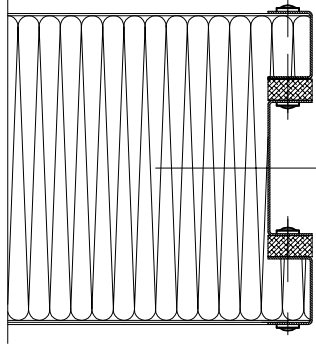
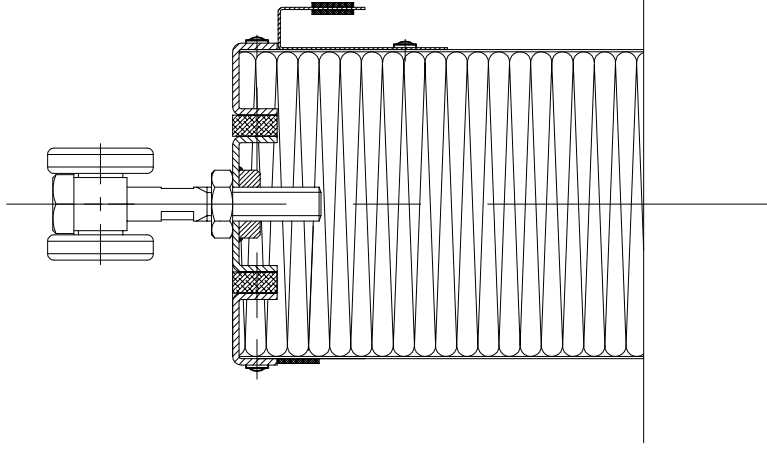


Drawing No. 1

Gate leaf to be fitted
according to enclosed scheme

Intersection A-A

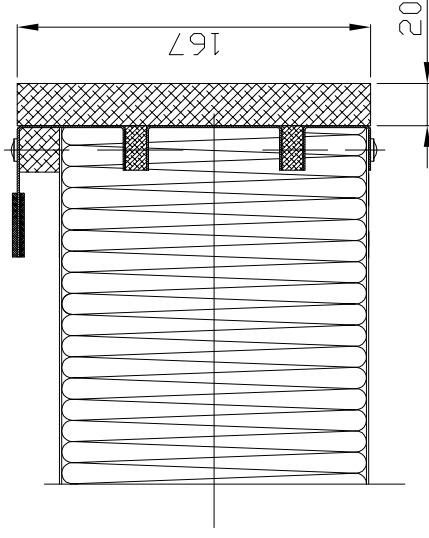
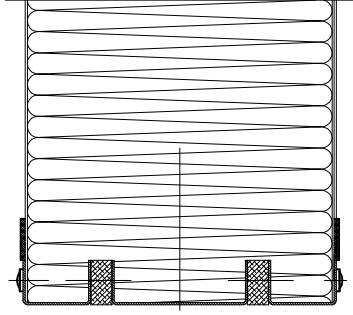
Intersection B-B



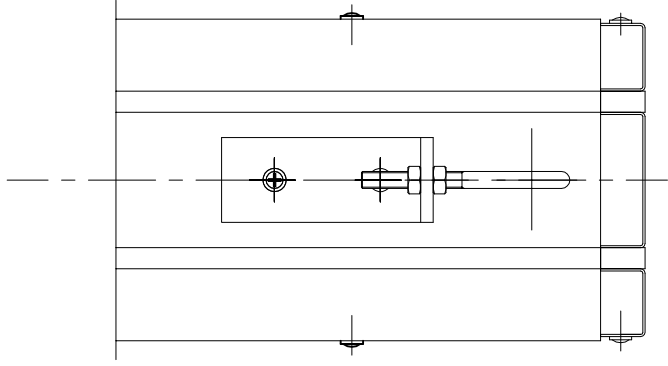
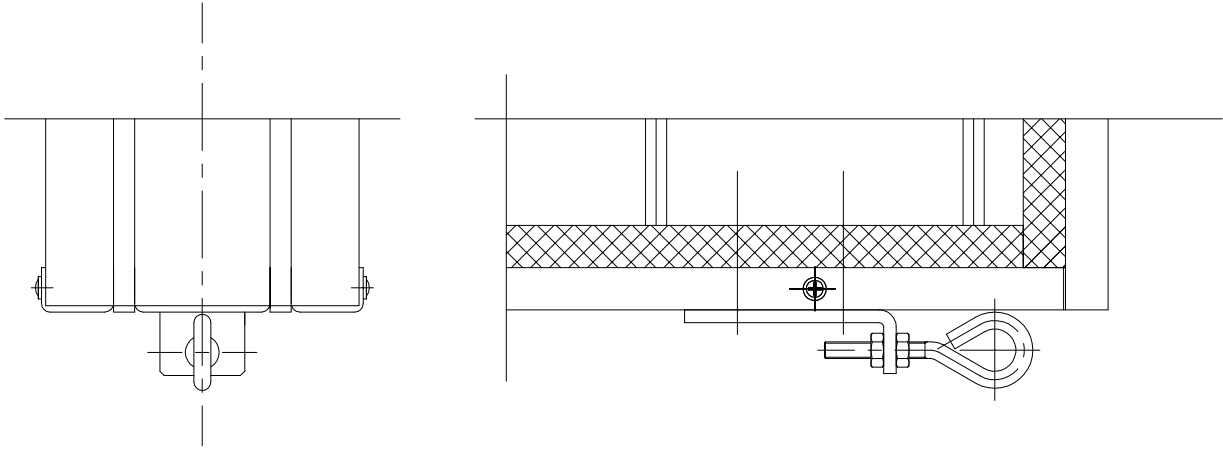
- Stick on the Promaseal PL gasket

Intersection C-C

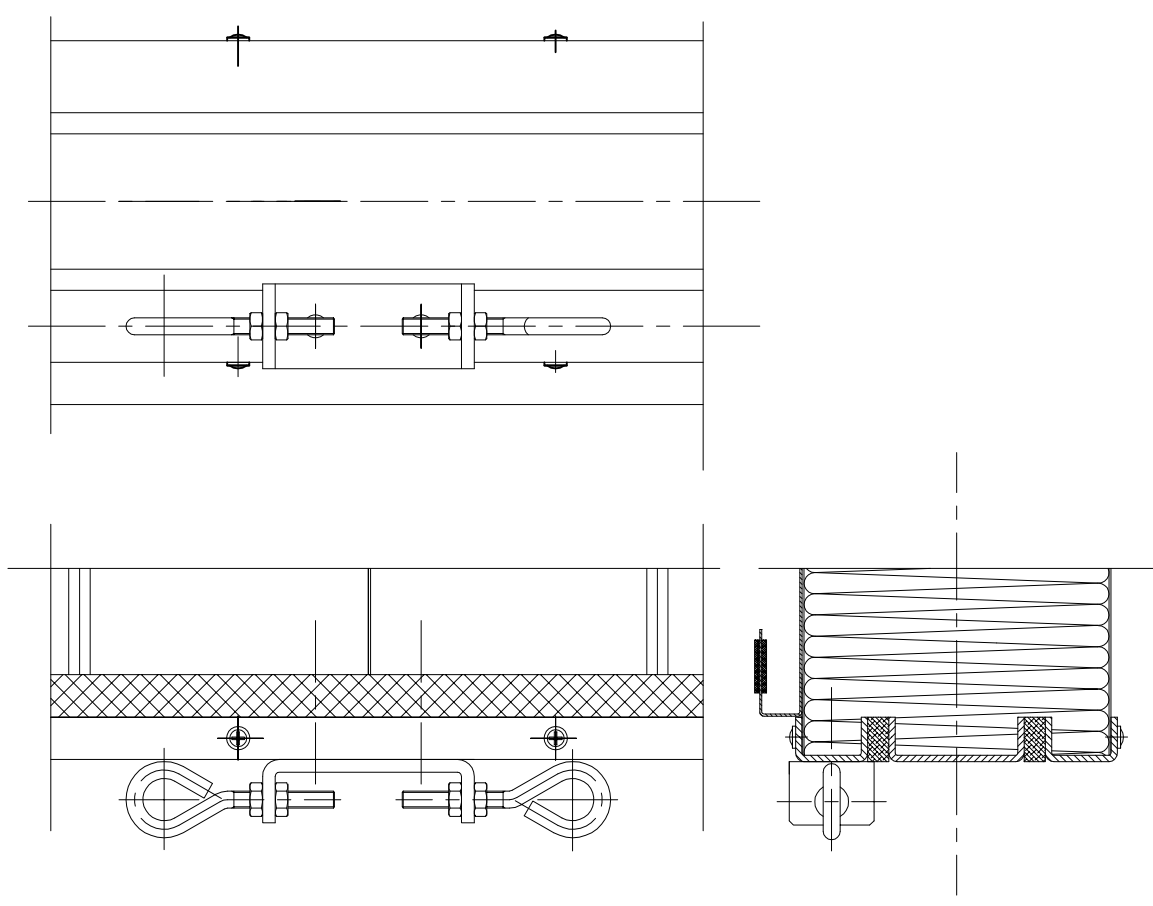
Intersection D-D

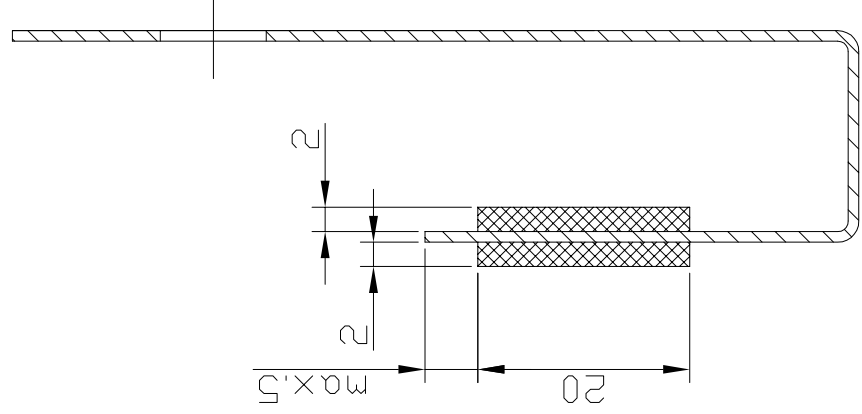


Detail A



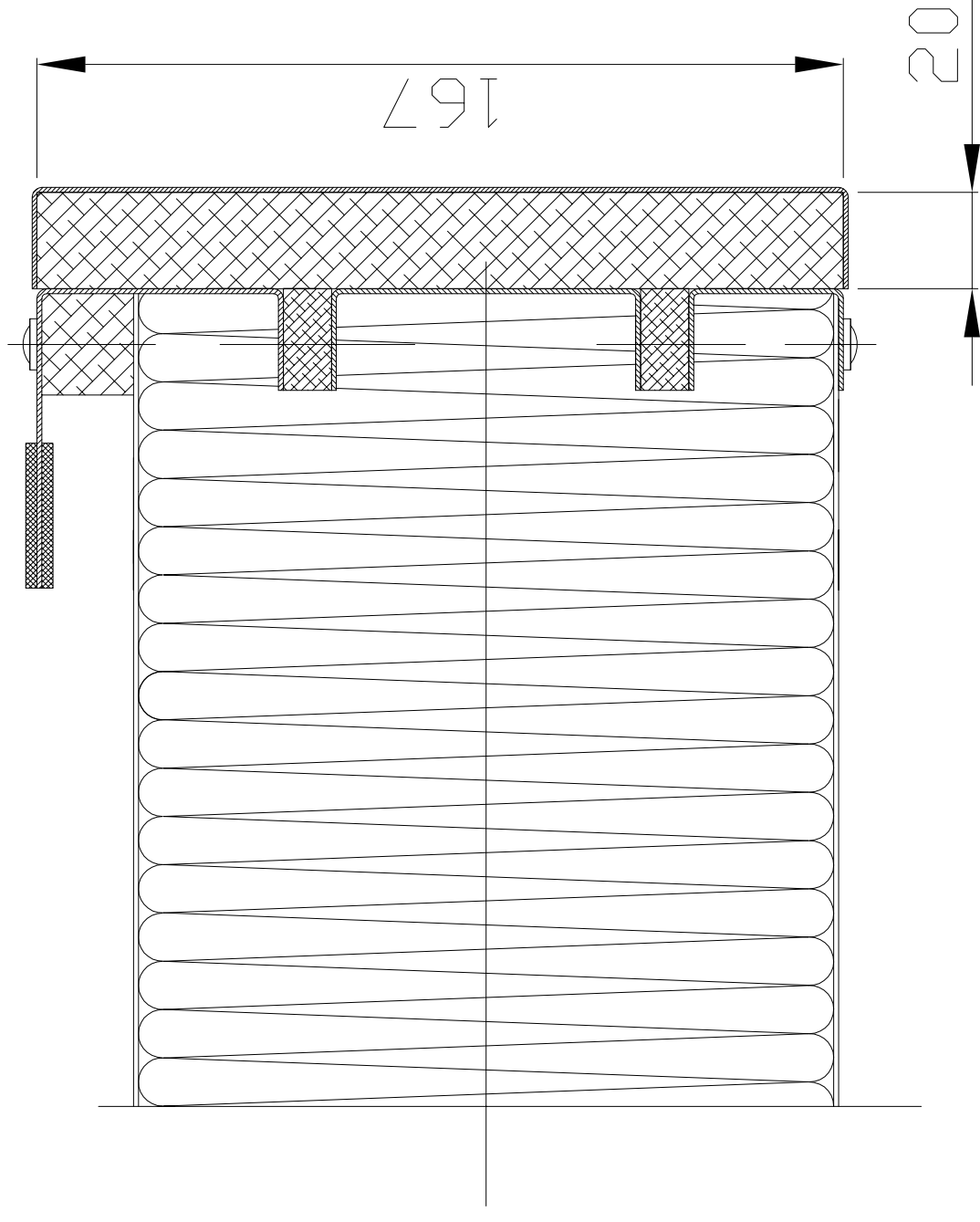
Detail B



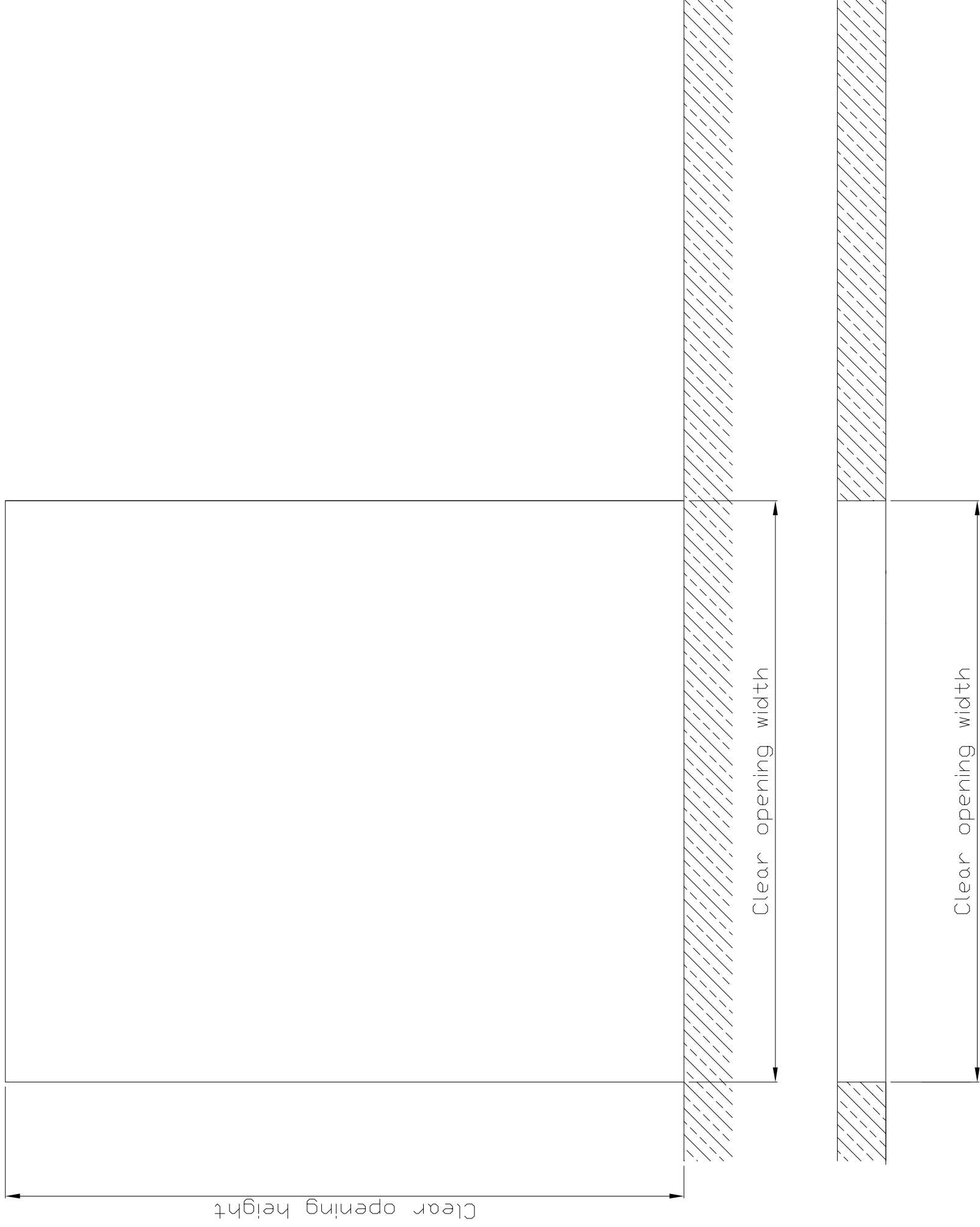


Paste the PROMASEAL PL gasket to labyrinth profile.

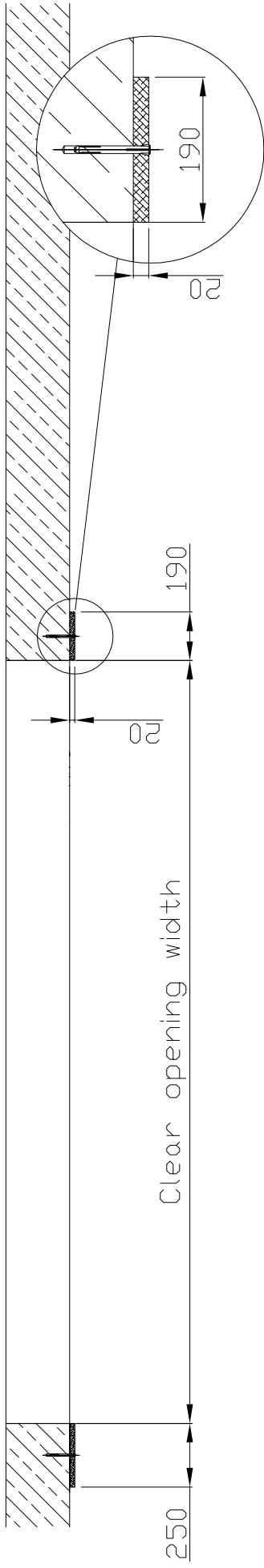
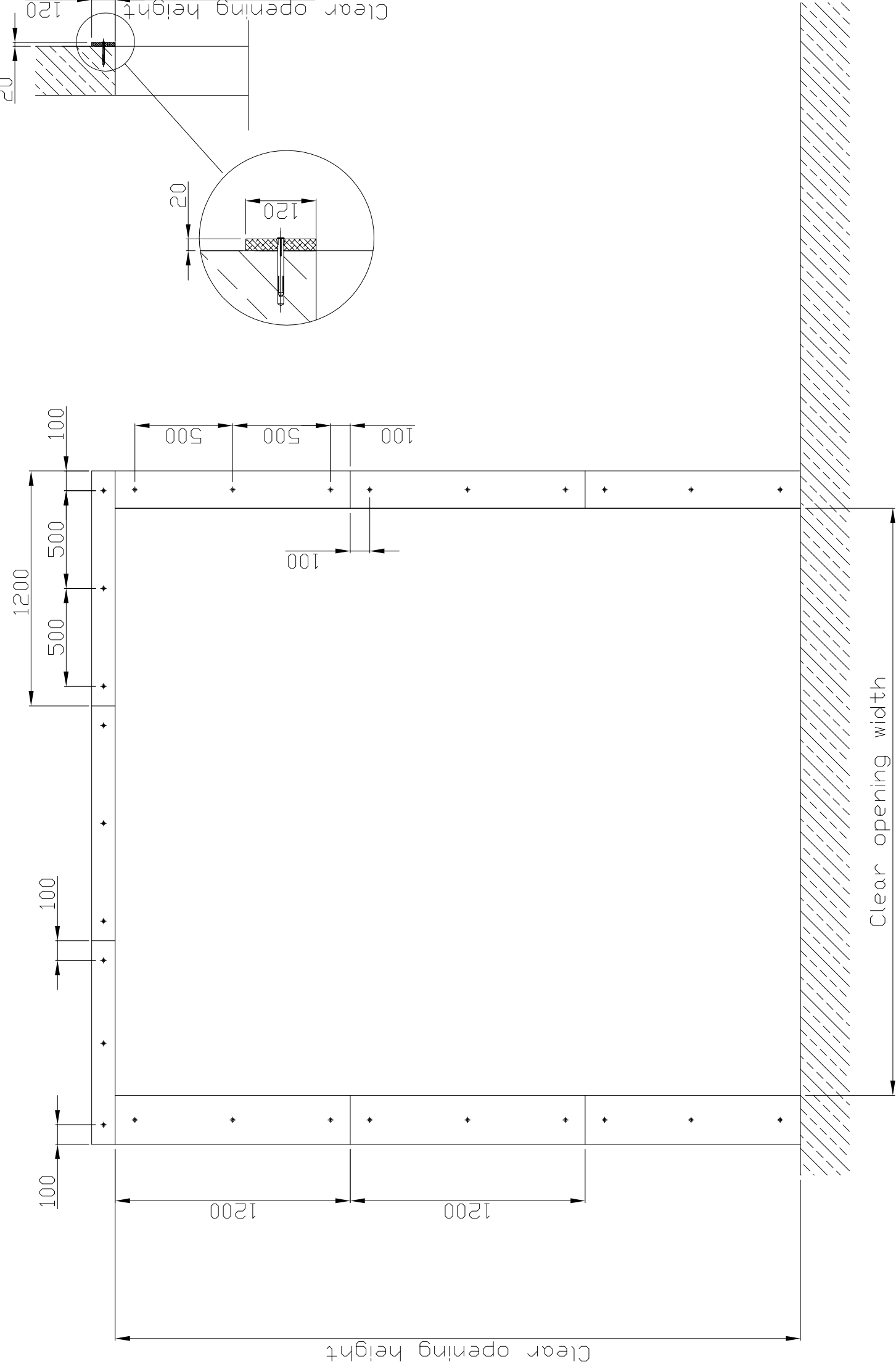
Intersection D-D



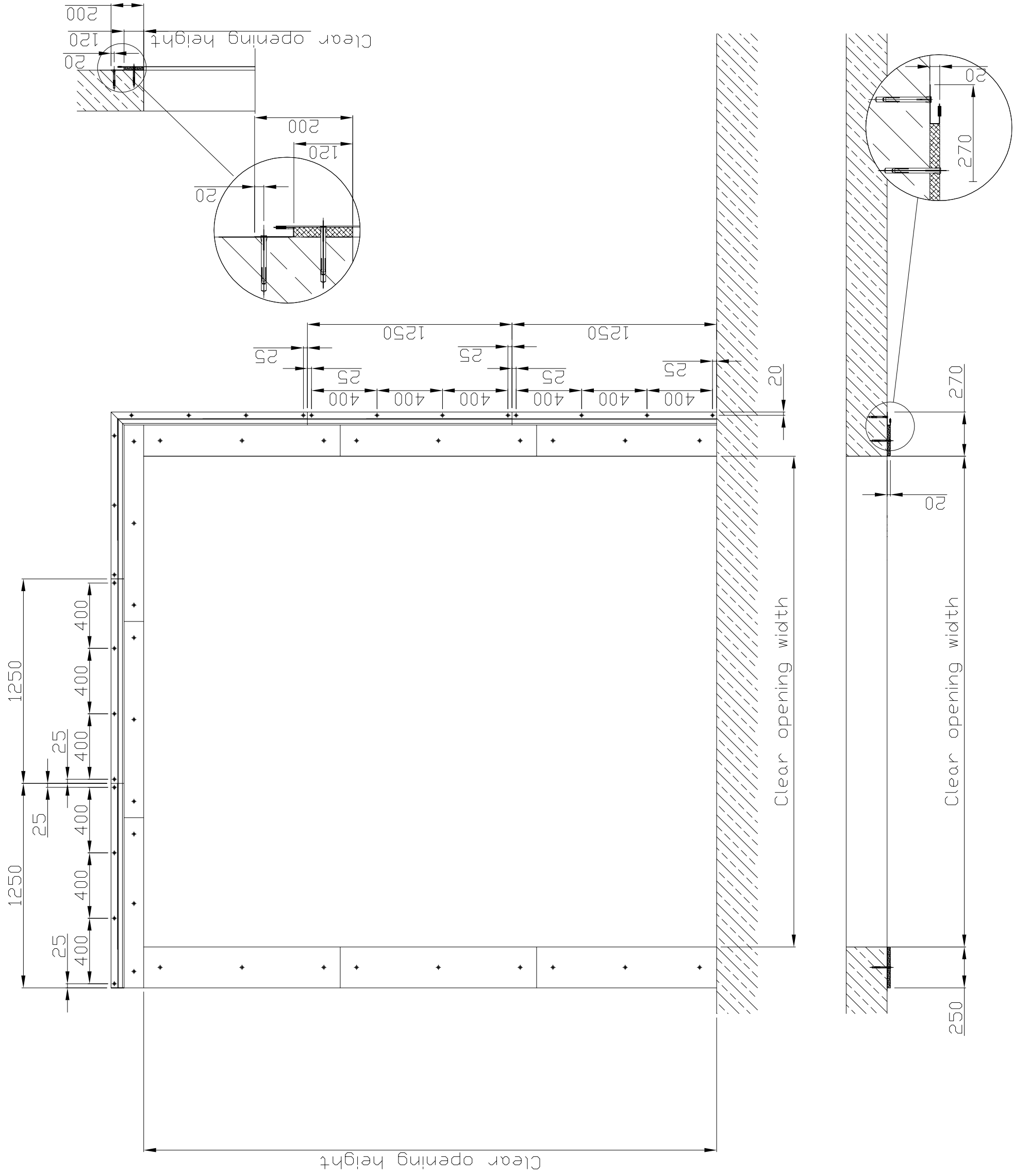
Drawing 1d
Only for external Gates-rear Promatect
stripe Has to be covered



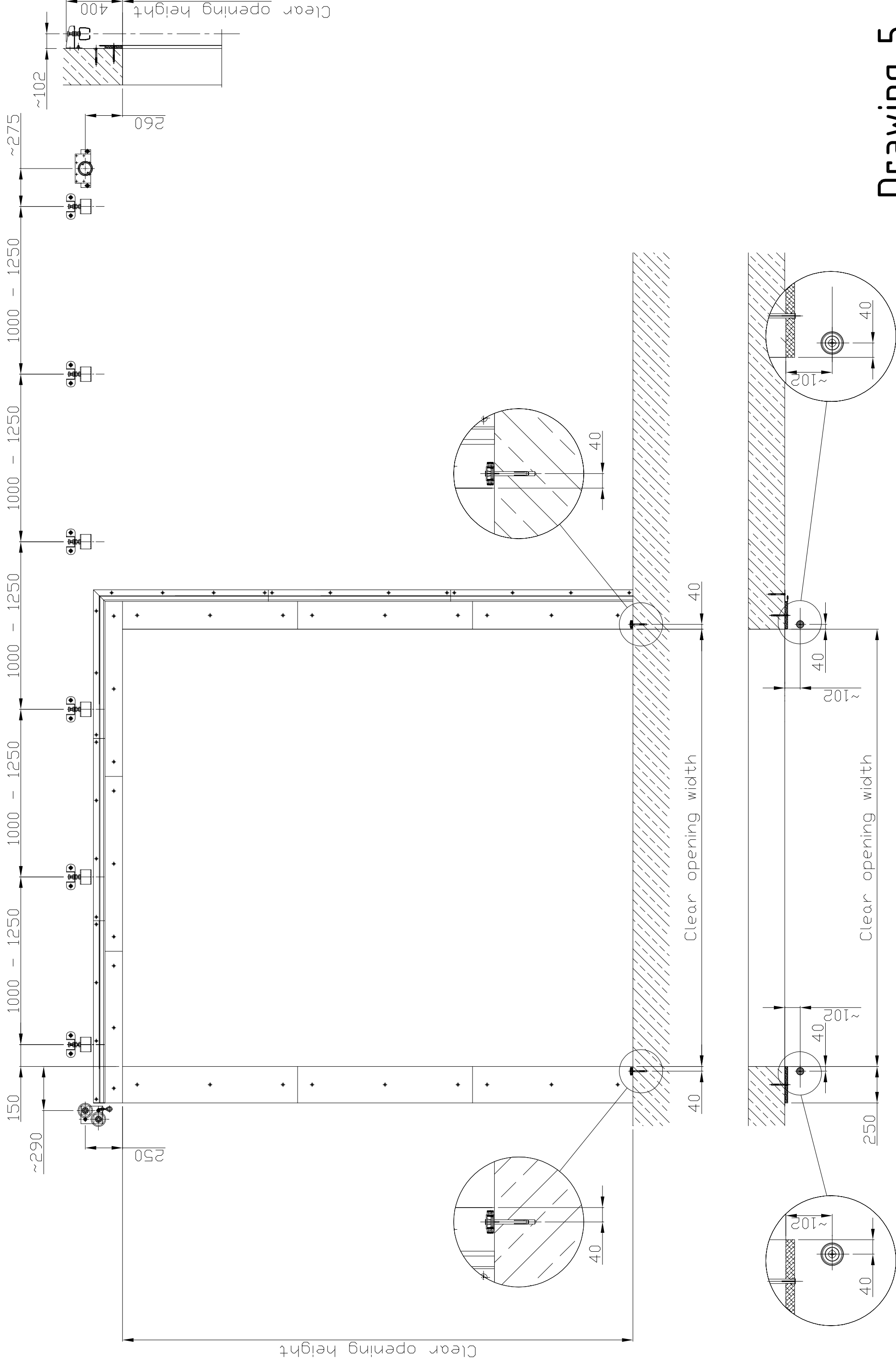
Drawing 2



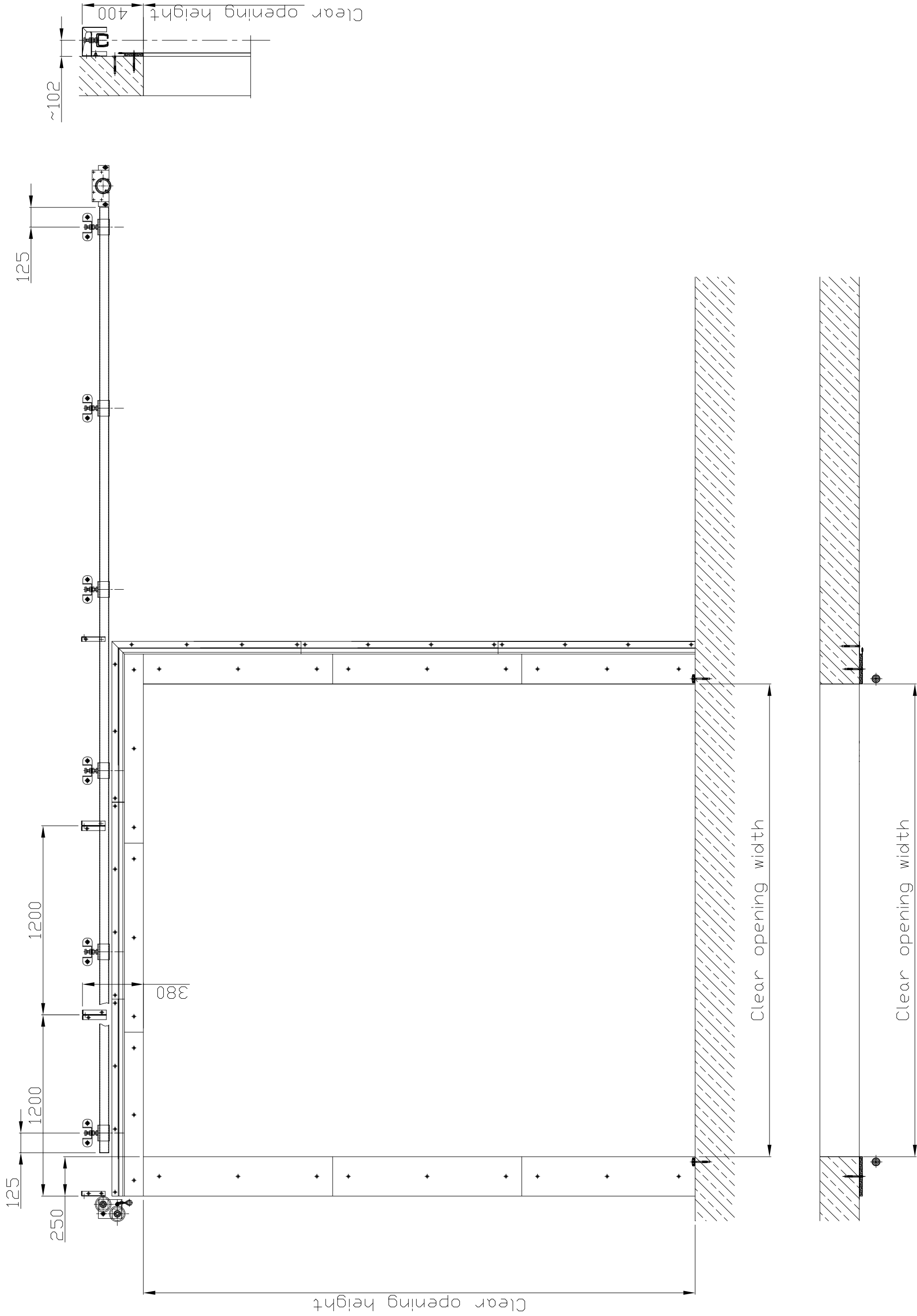
Drawing 3



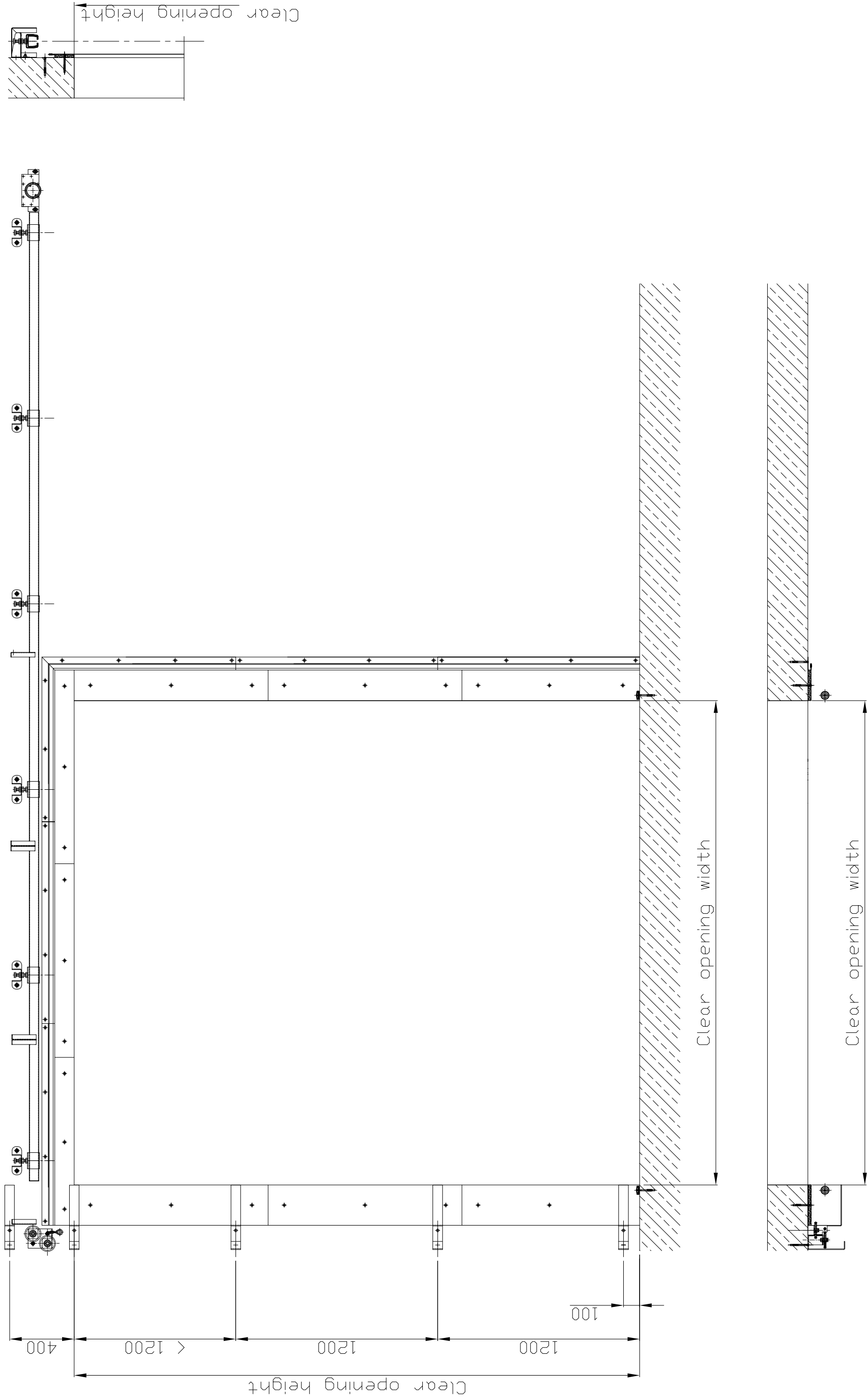
Drawing 4



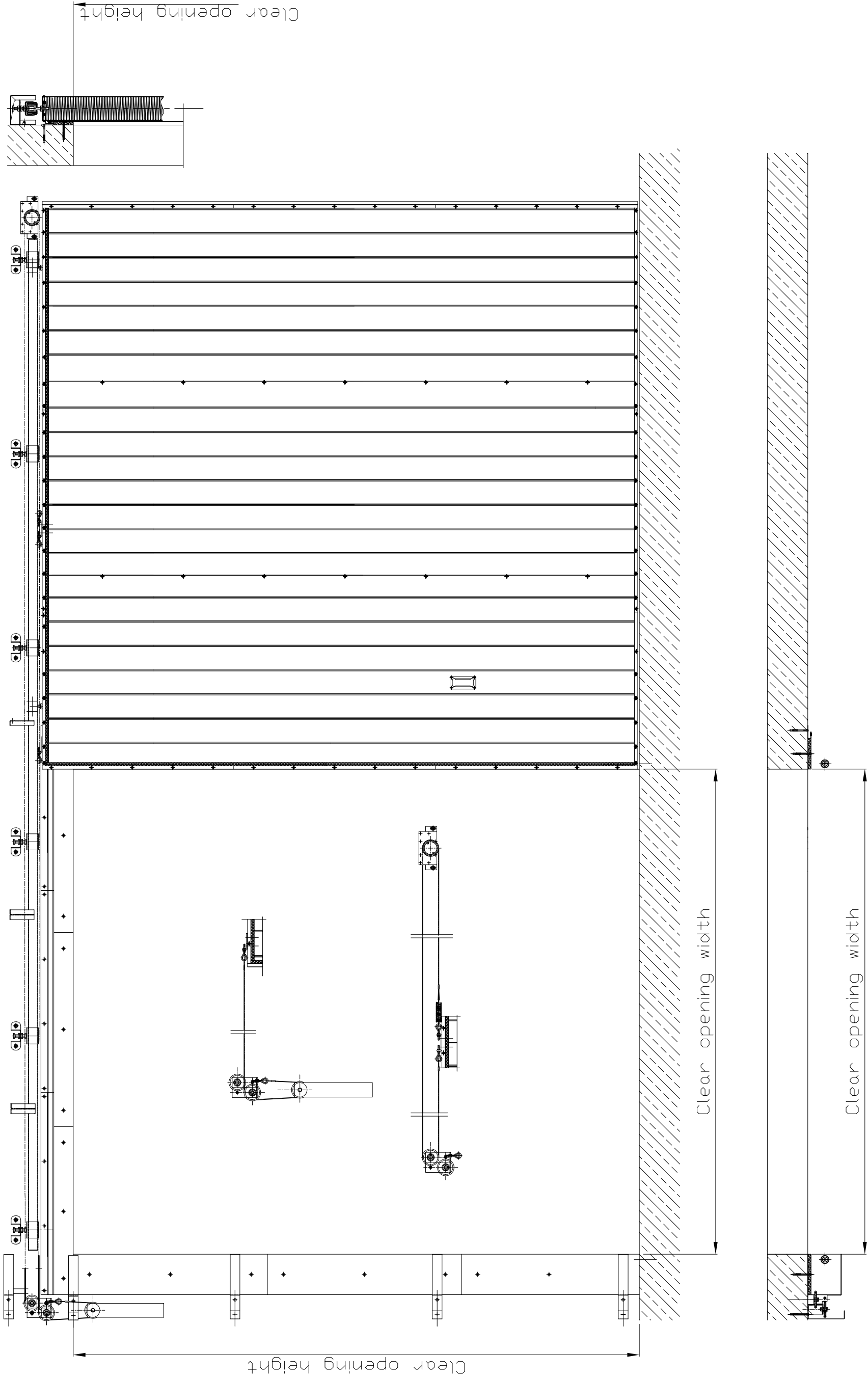
Drawing 5



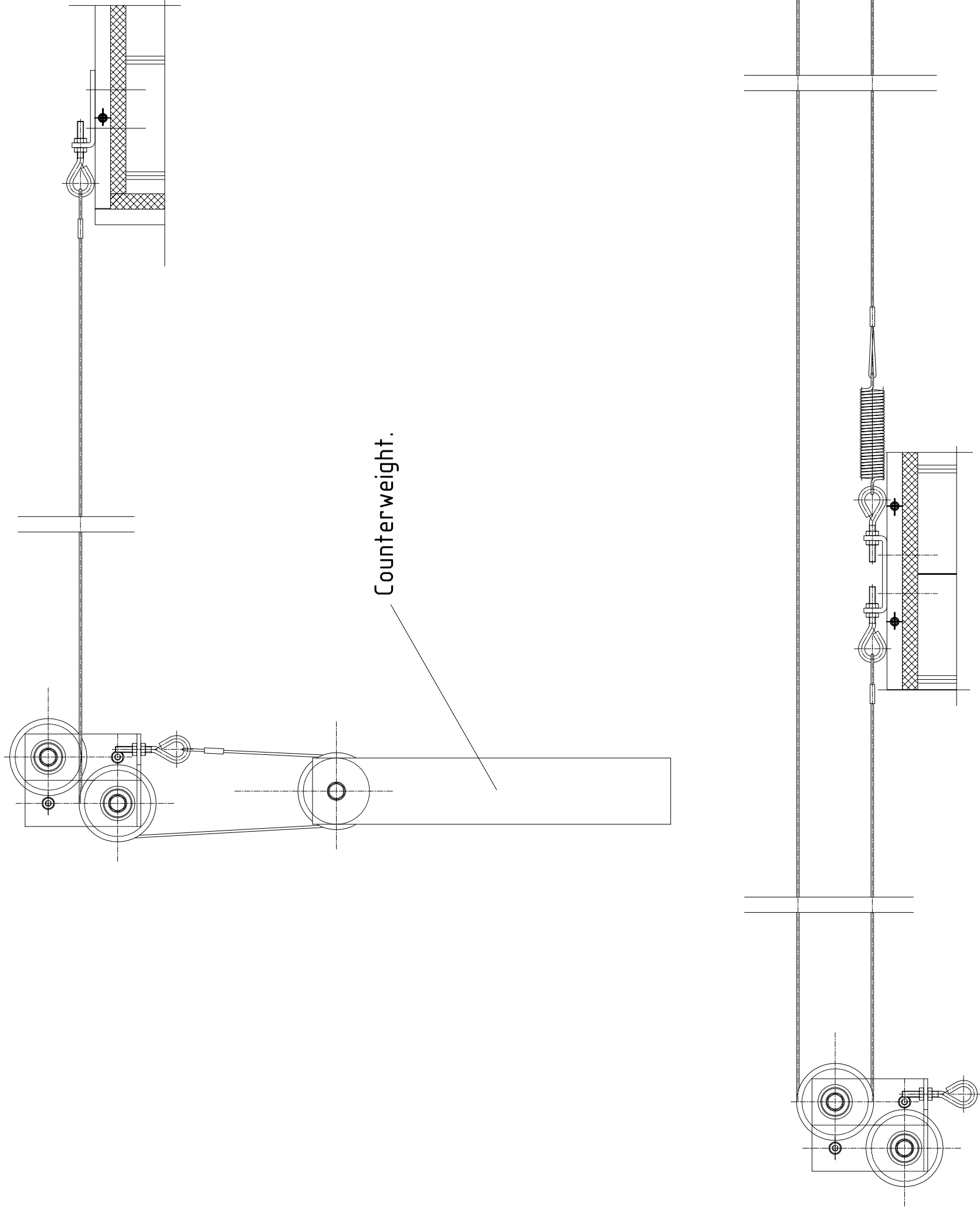
Drawing 6



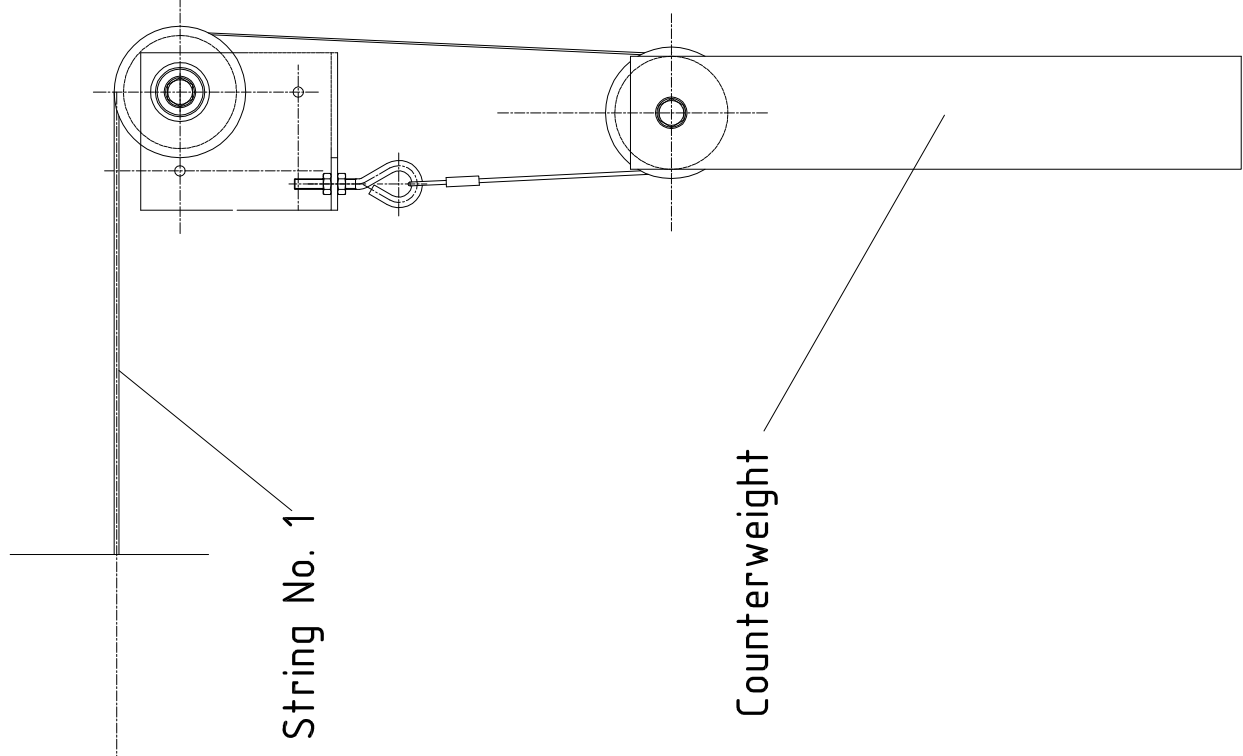
Drawing 7



Drawing 8

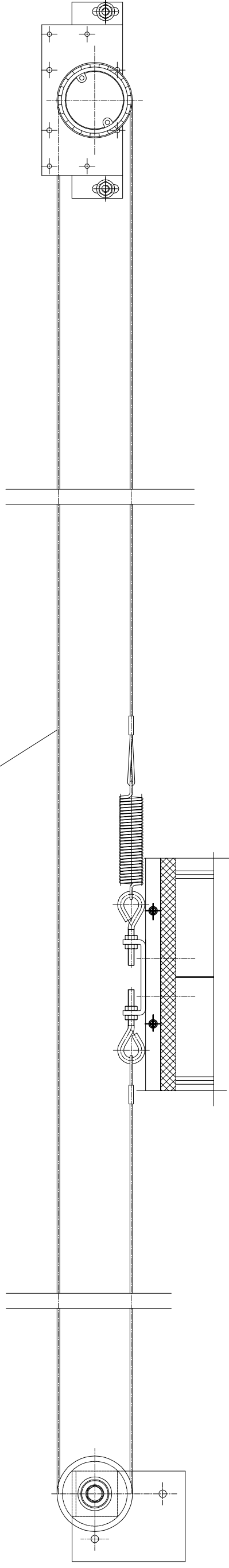


Drawing 8a
Gate with counterweight at closing side (standard solution)



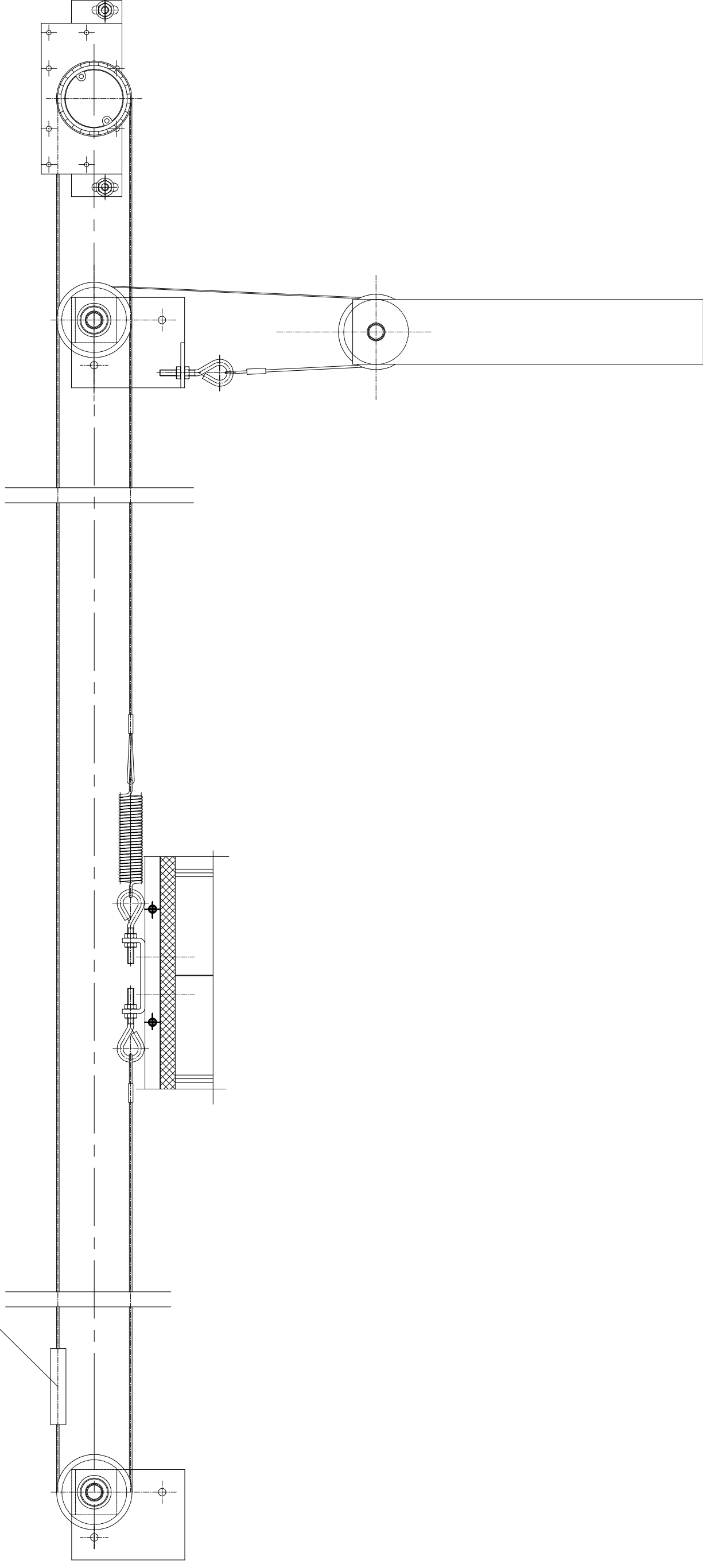
Counterweight strings installation method
and radial spring for gate with
counterweight placed at back side.
(NOTICE! Gate's elements designed for LEFT
SIDE CLOSING - for gates closed to right
side-MIRROR IMAGE.

String No. 2

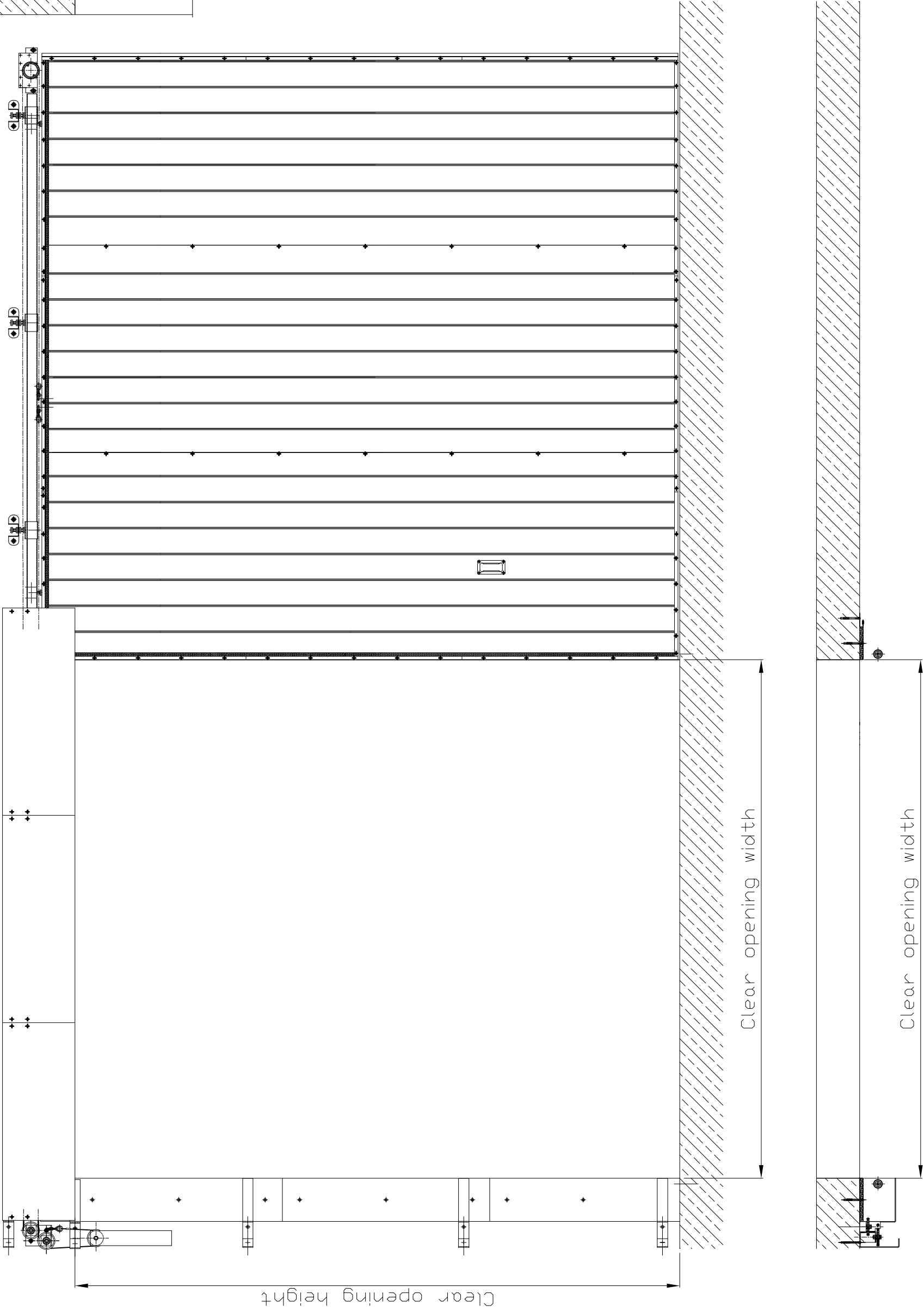


Drawing 8b - 1
Solution for gate with counterweight placed at the back

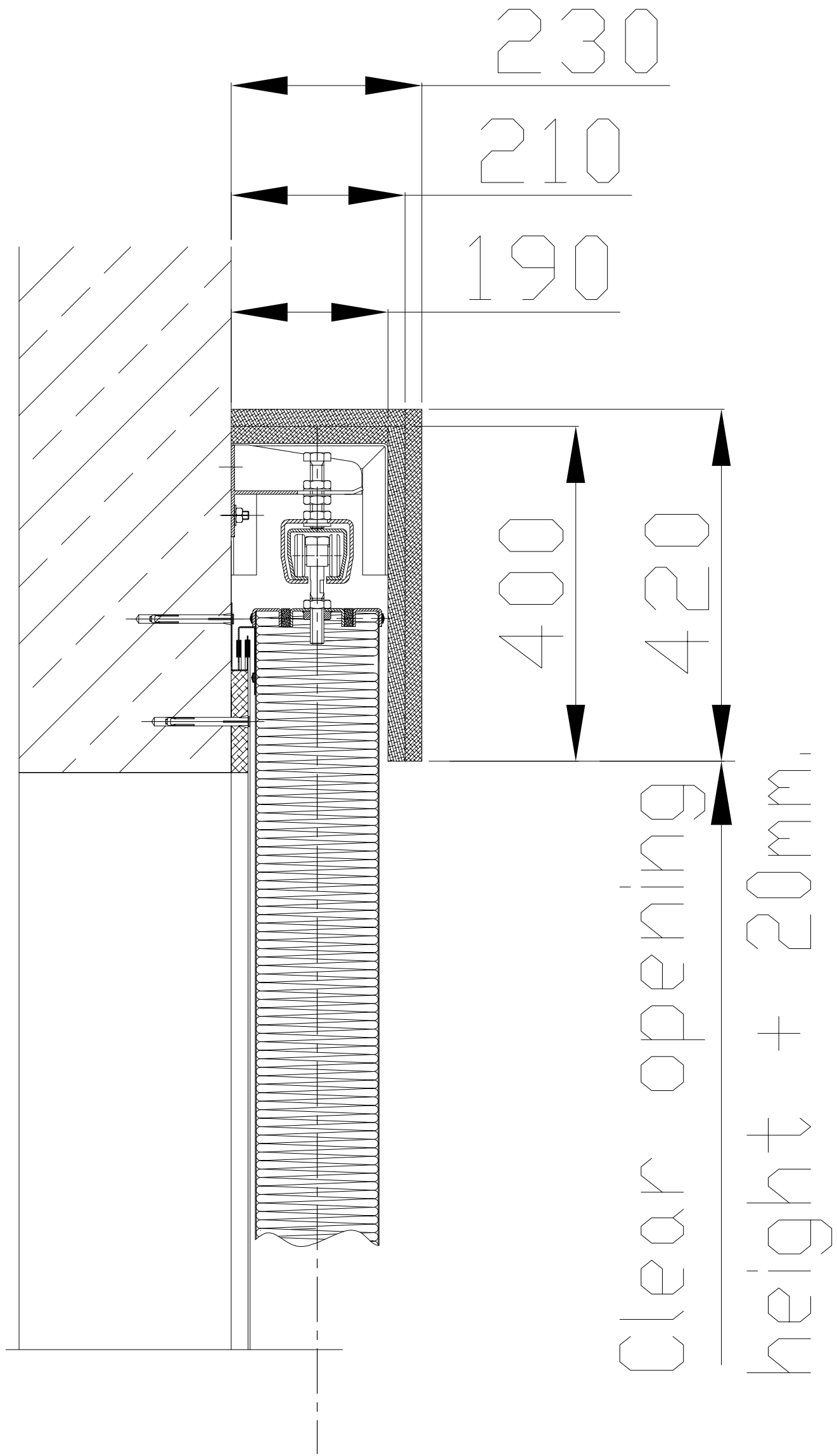
Point of strings
no.1 & no.2
connection for
gate in closed
position



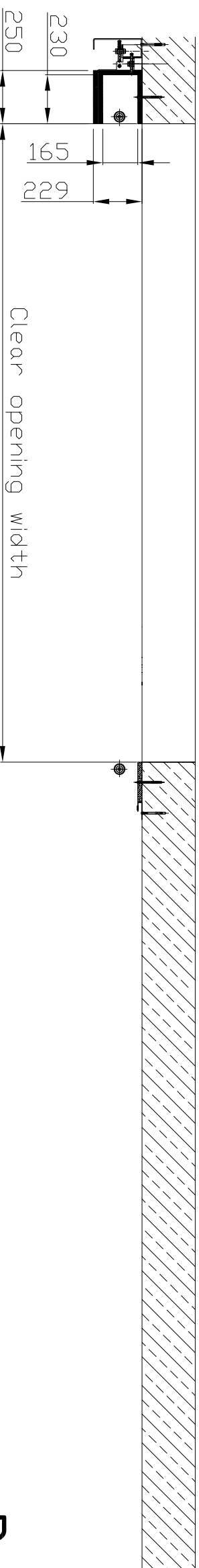
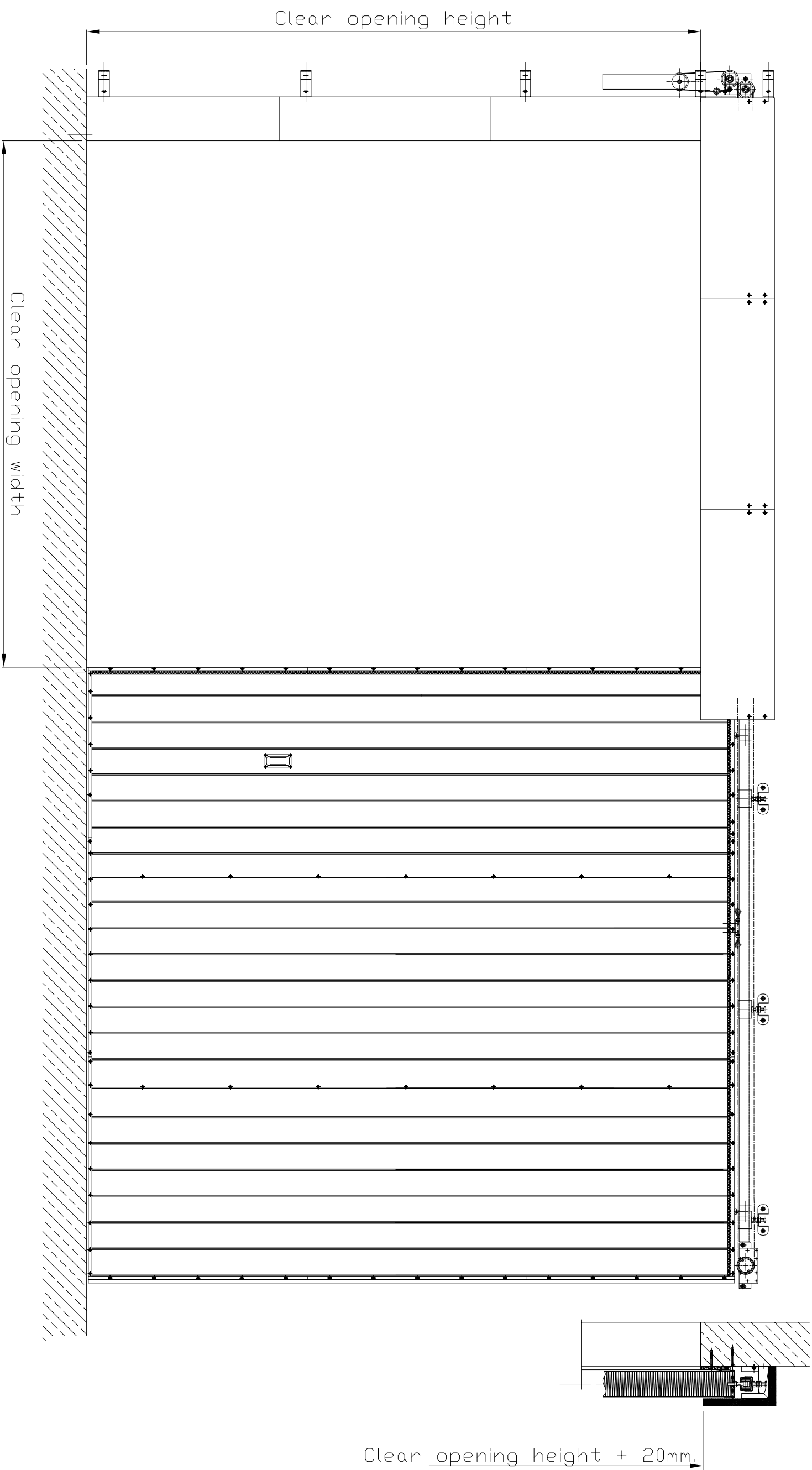
Drawing 8b - 2
Solution for gate with counterweight placed at the back - assembly.



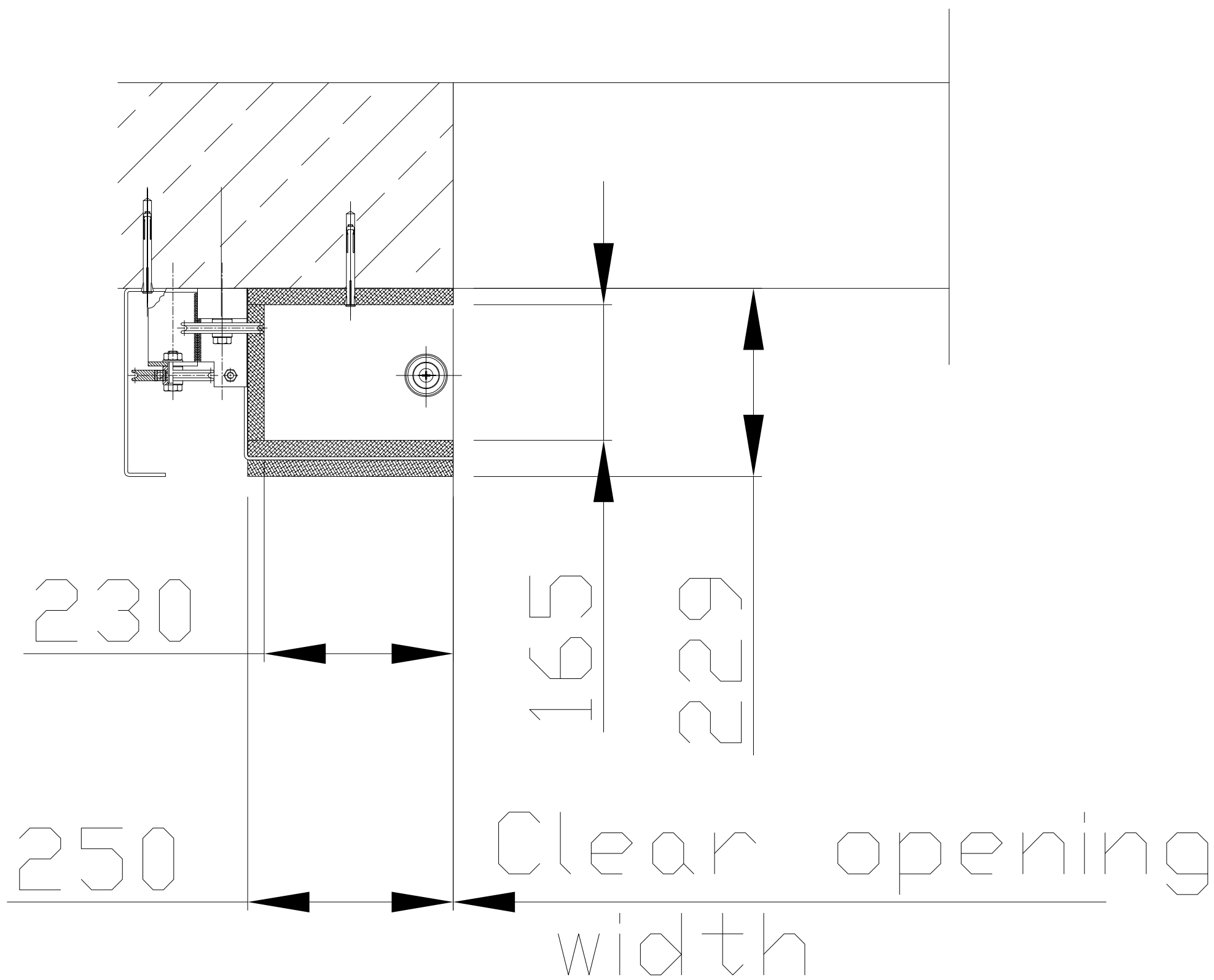
Drawing 9



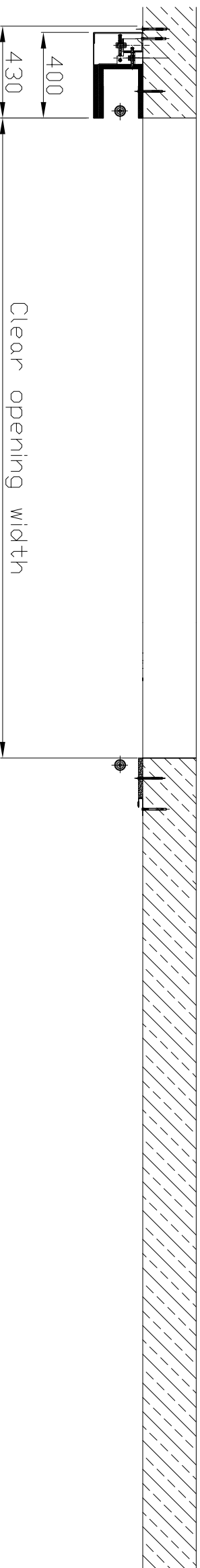
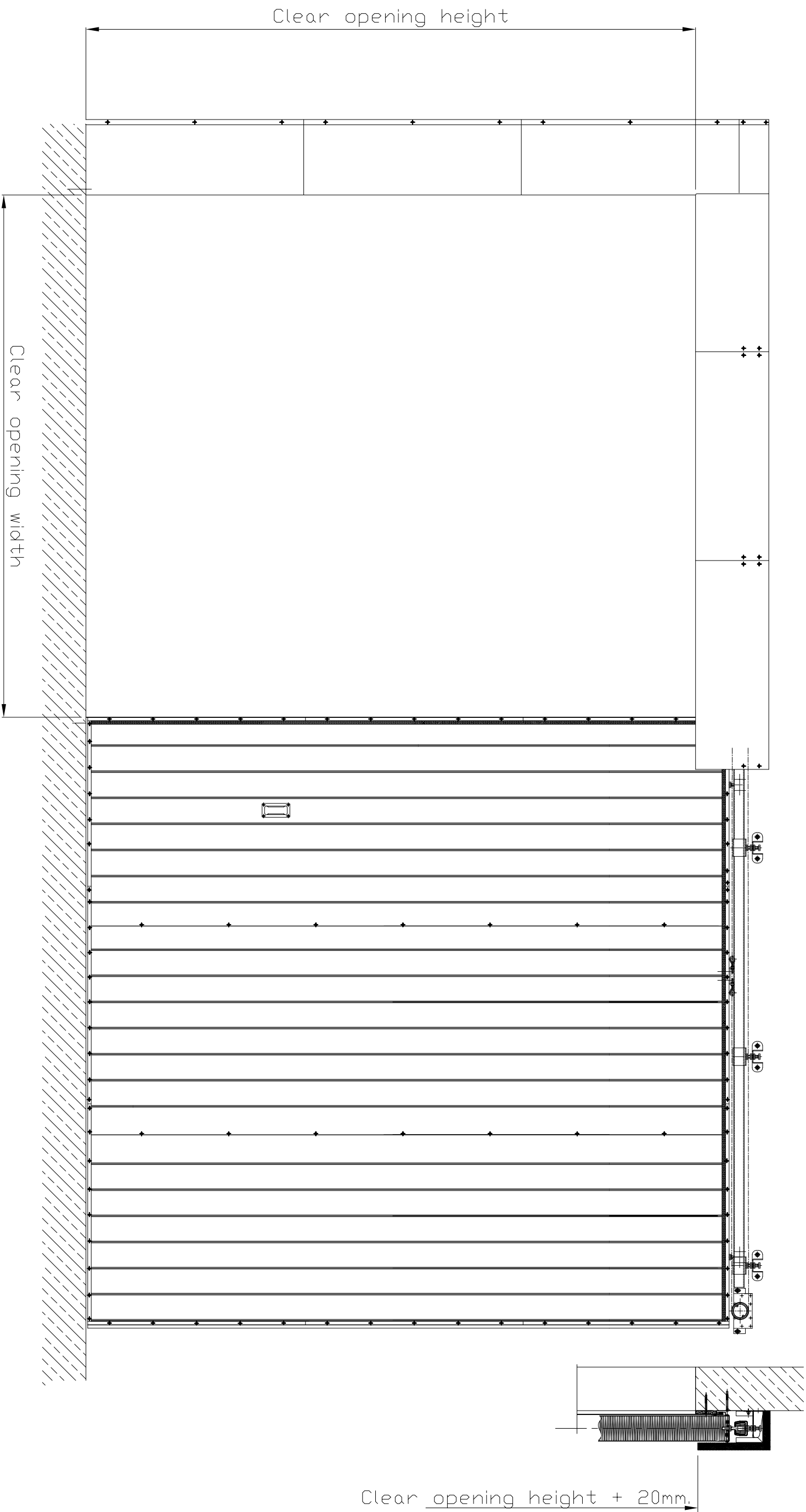
Drawing 9a



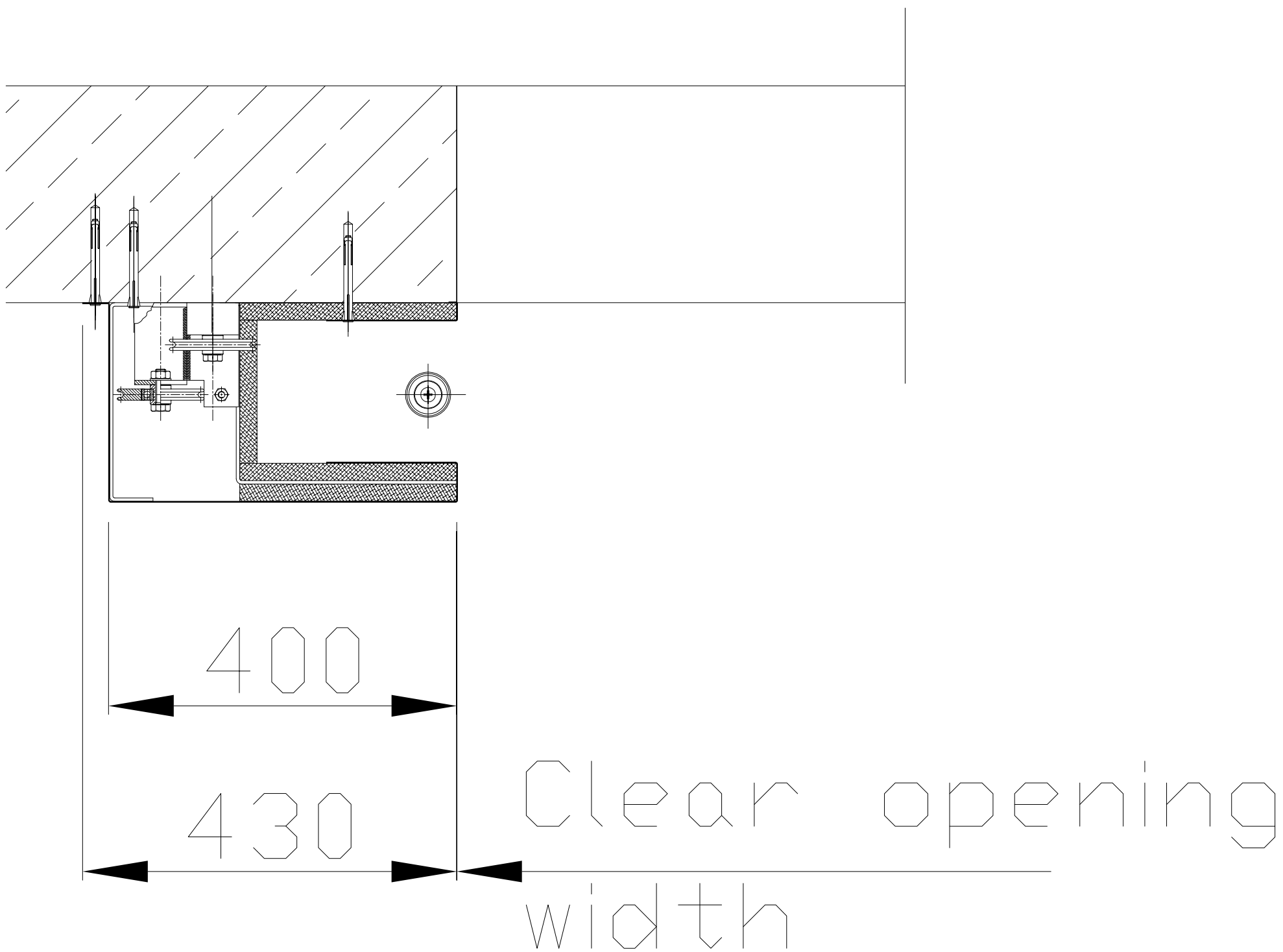
Drawing 10



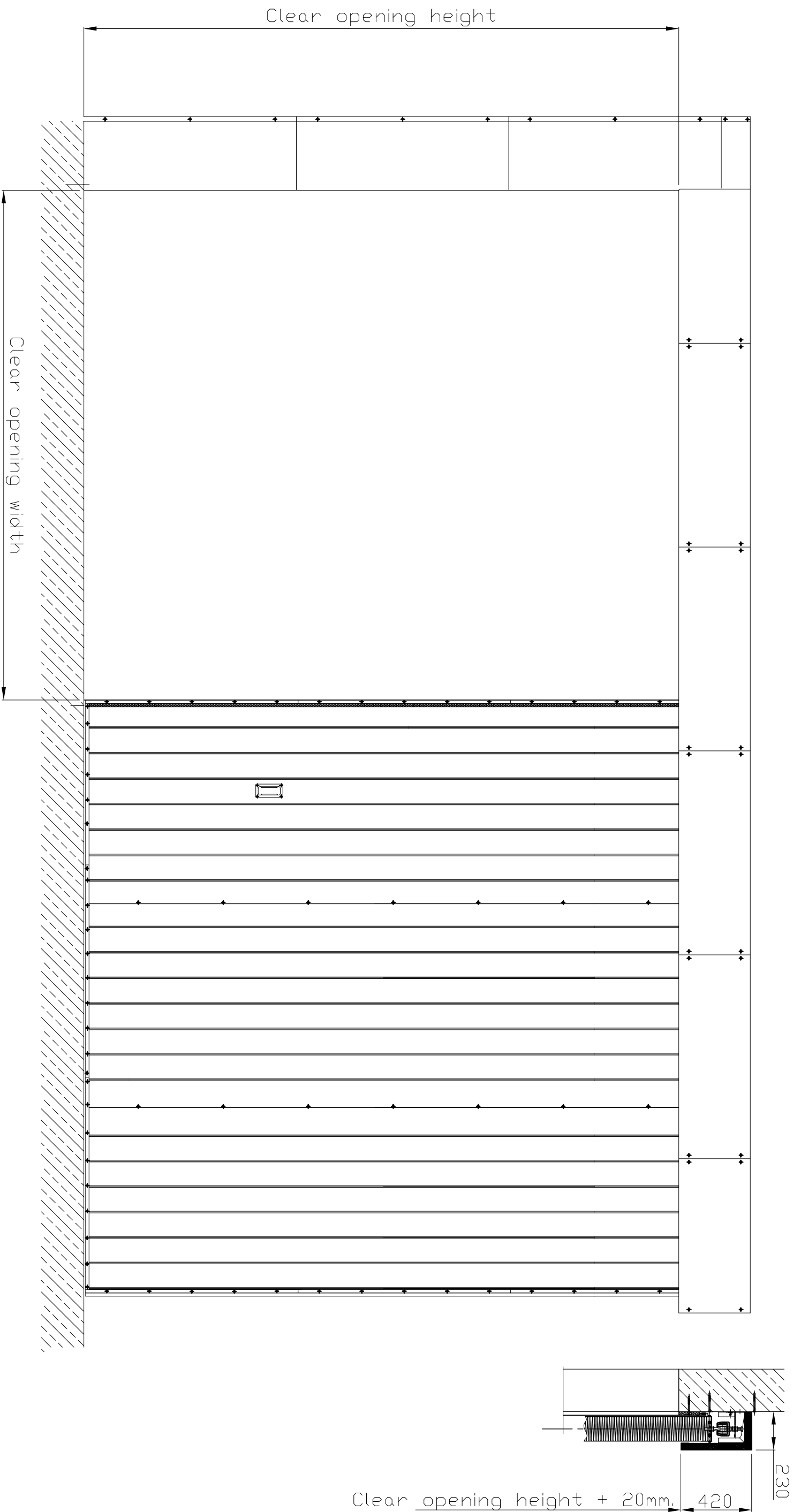
Drawing 10a



Drawing 11

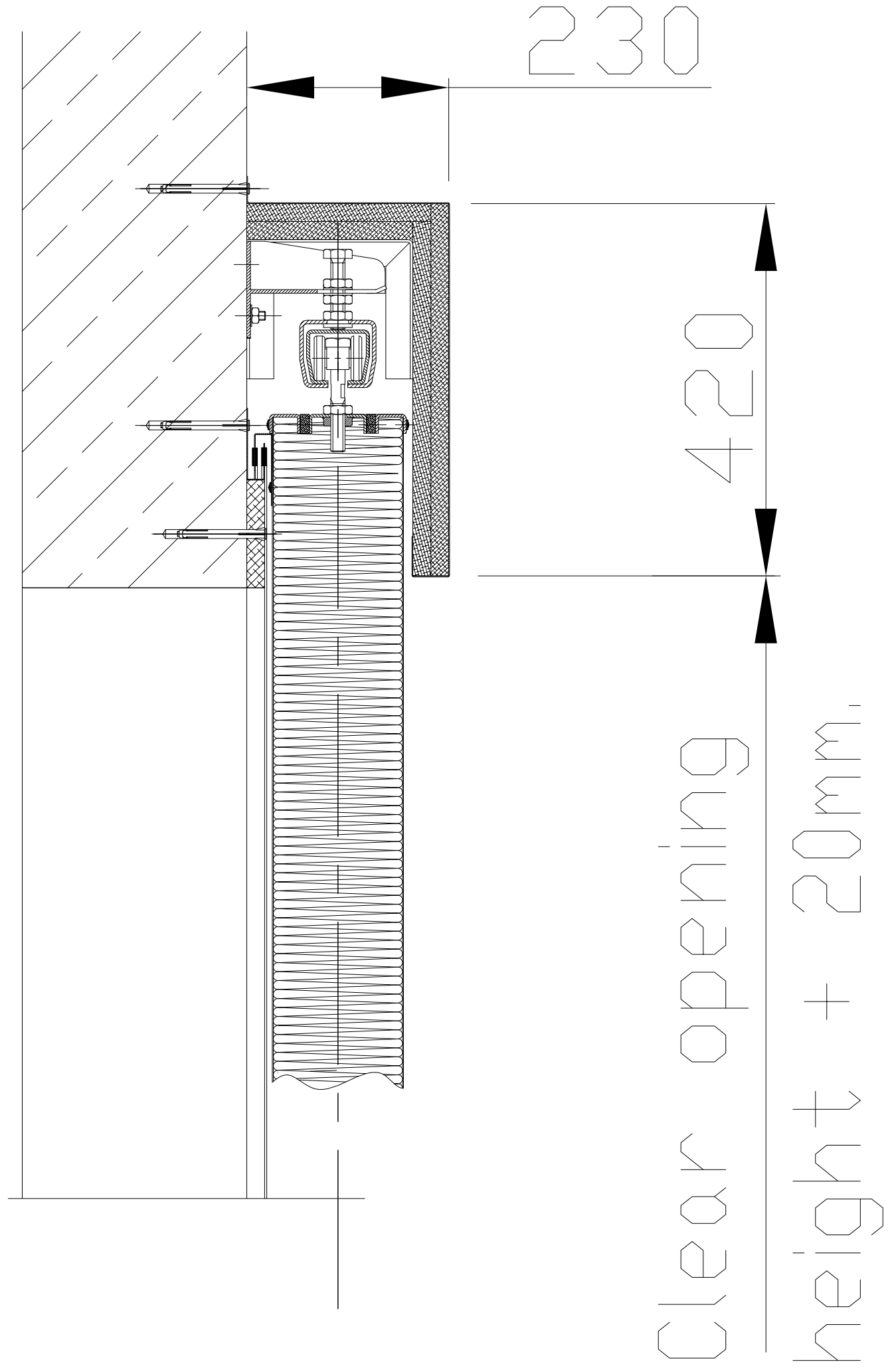


Drawing 11a



Drawing 12

Full cover installation for slide way.
Only for external gates.



Drawing 12a