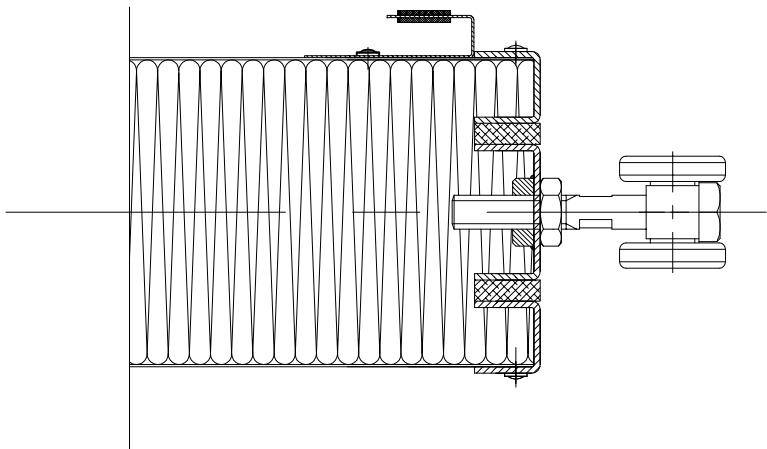


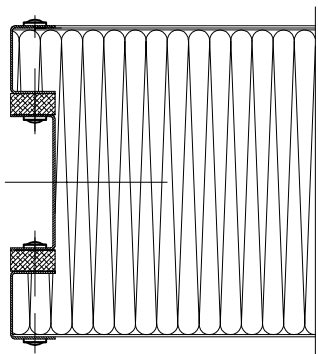
Drawing 1

Gate leaf shall be fitted according to attached scheme.

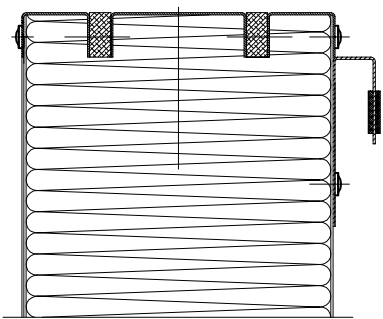
Cross-section A-A



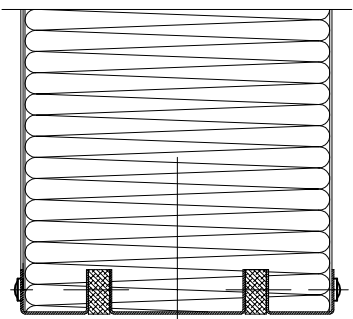
Cross-section B-B



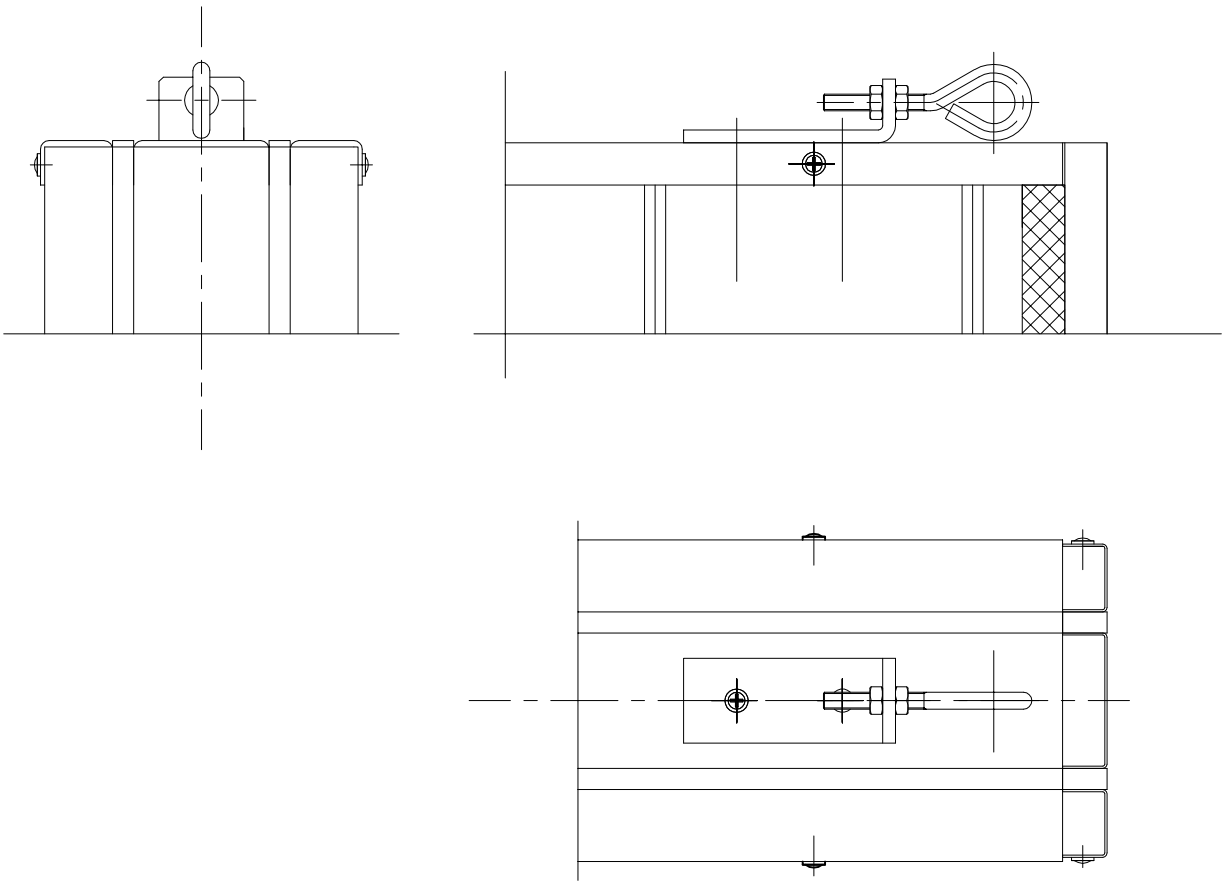
Cross-section D-D



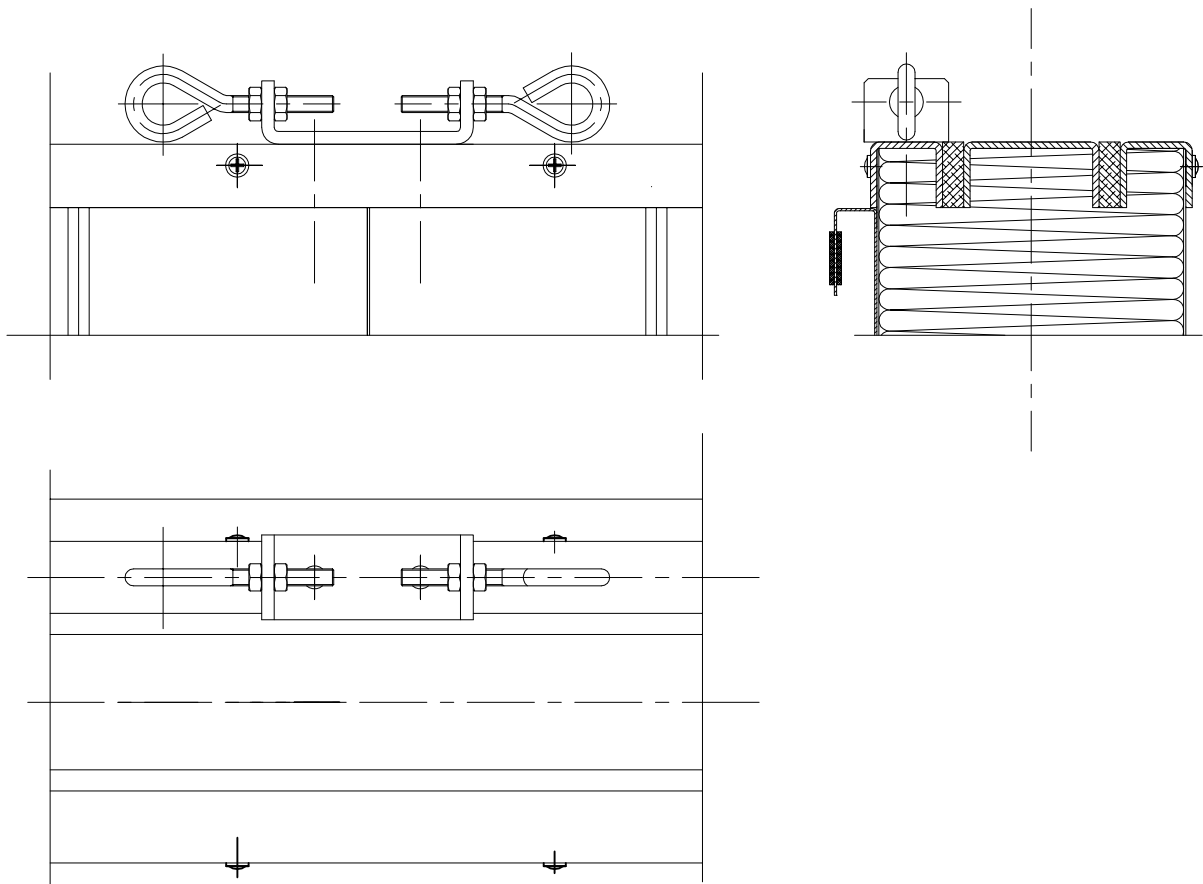
Cross-section C-C

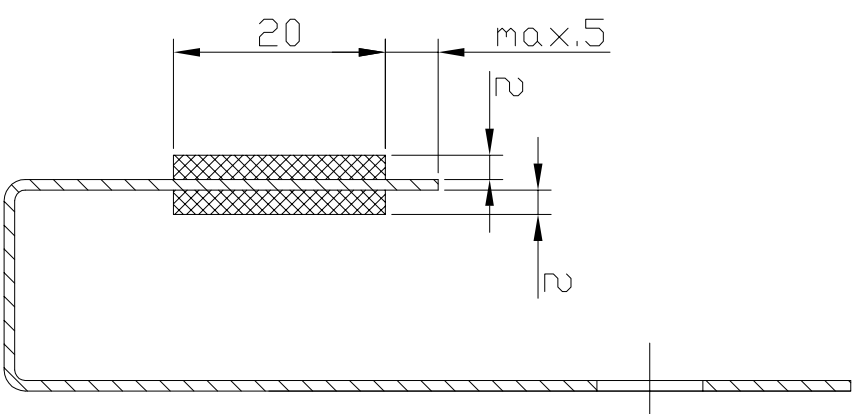


Detail A

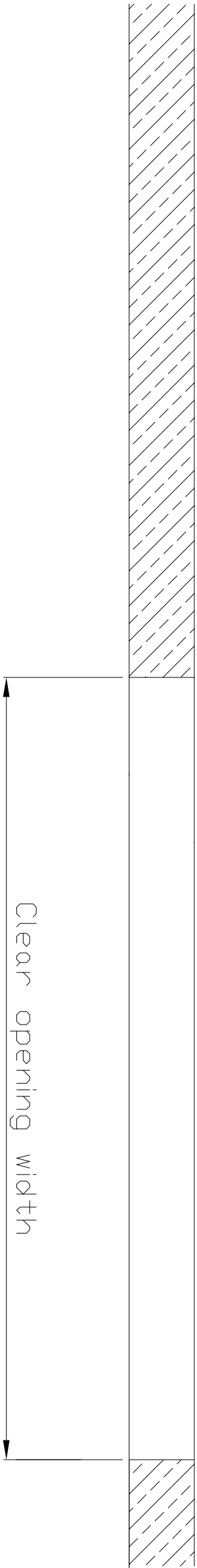
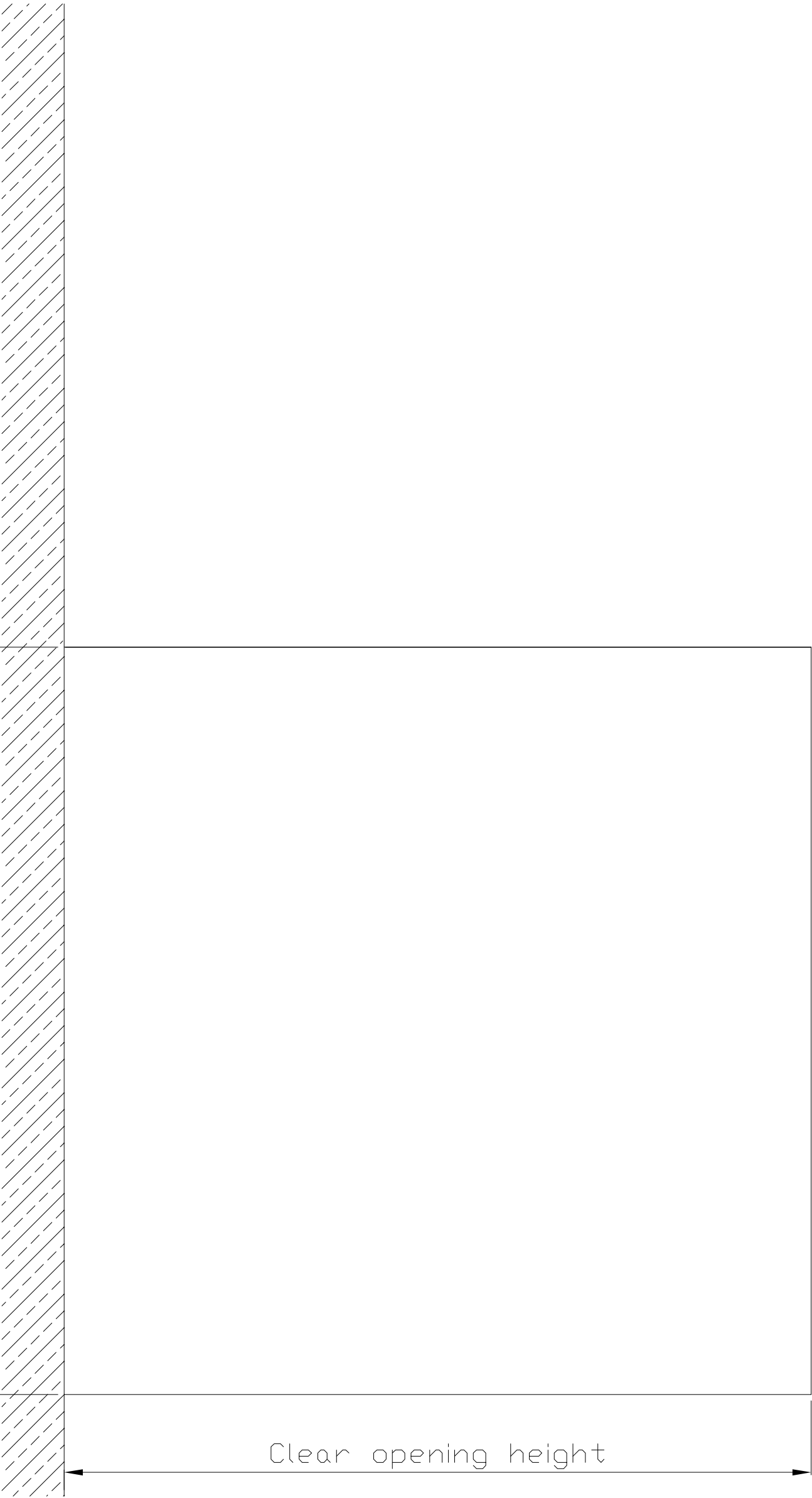


Detail B

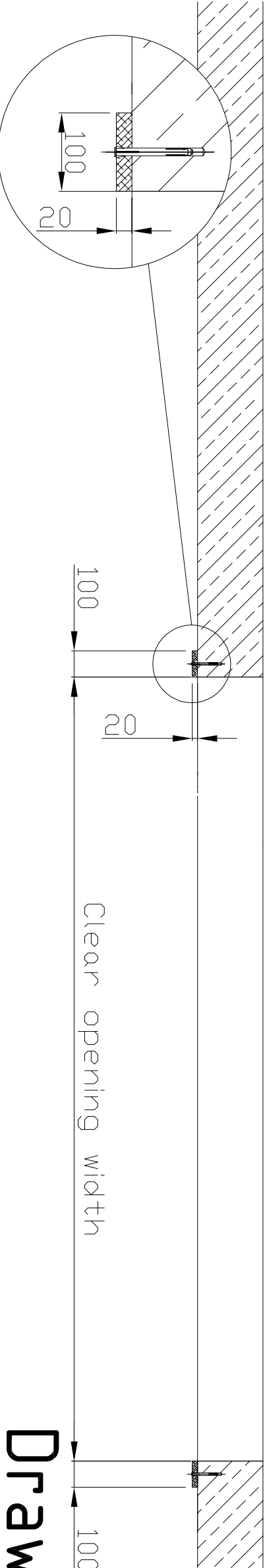
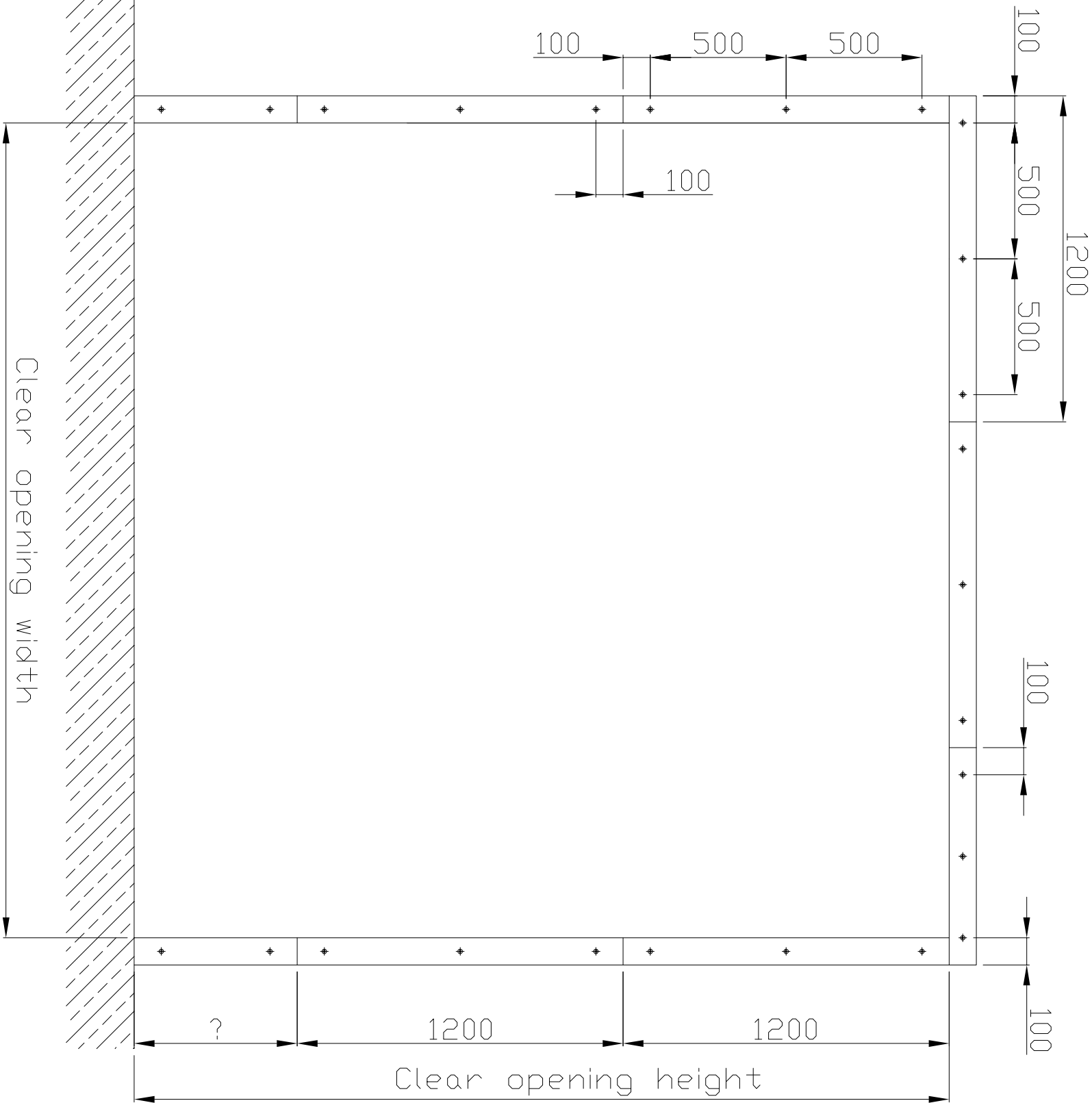
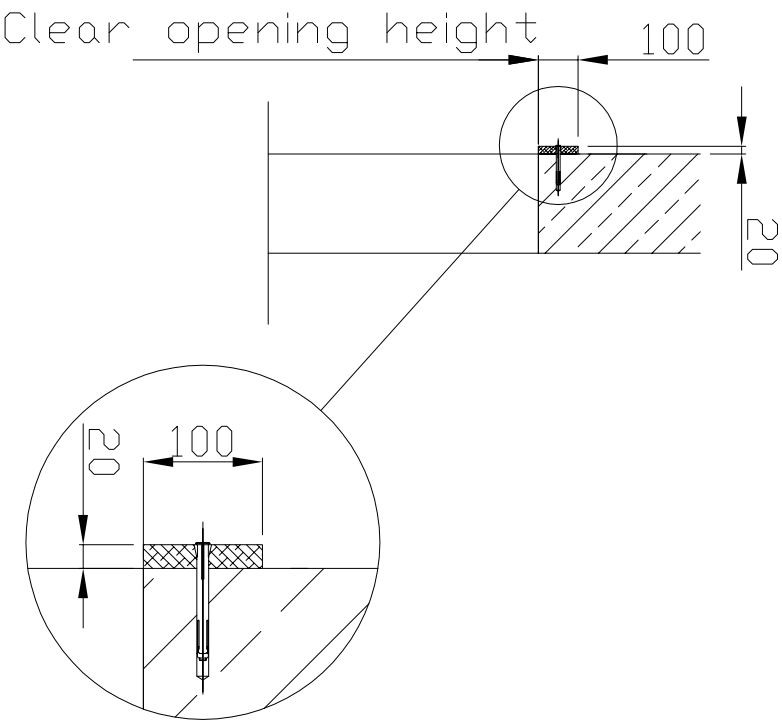


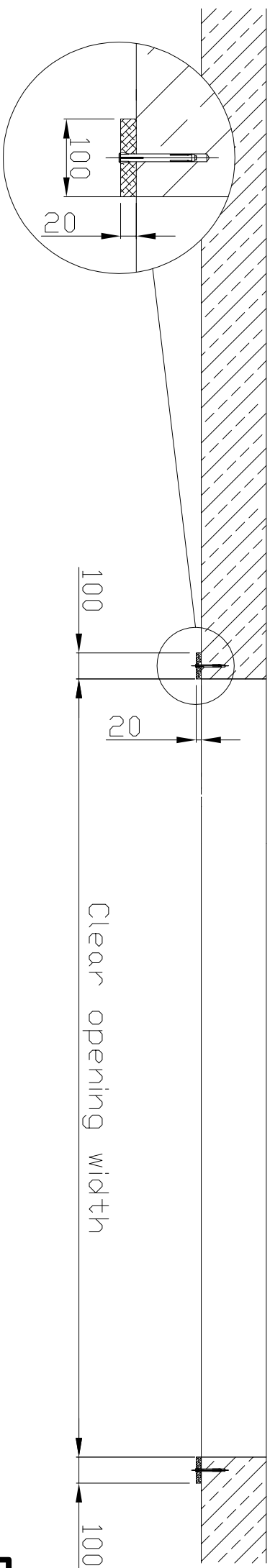
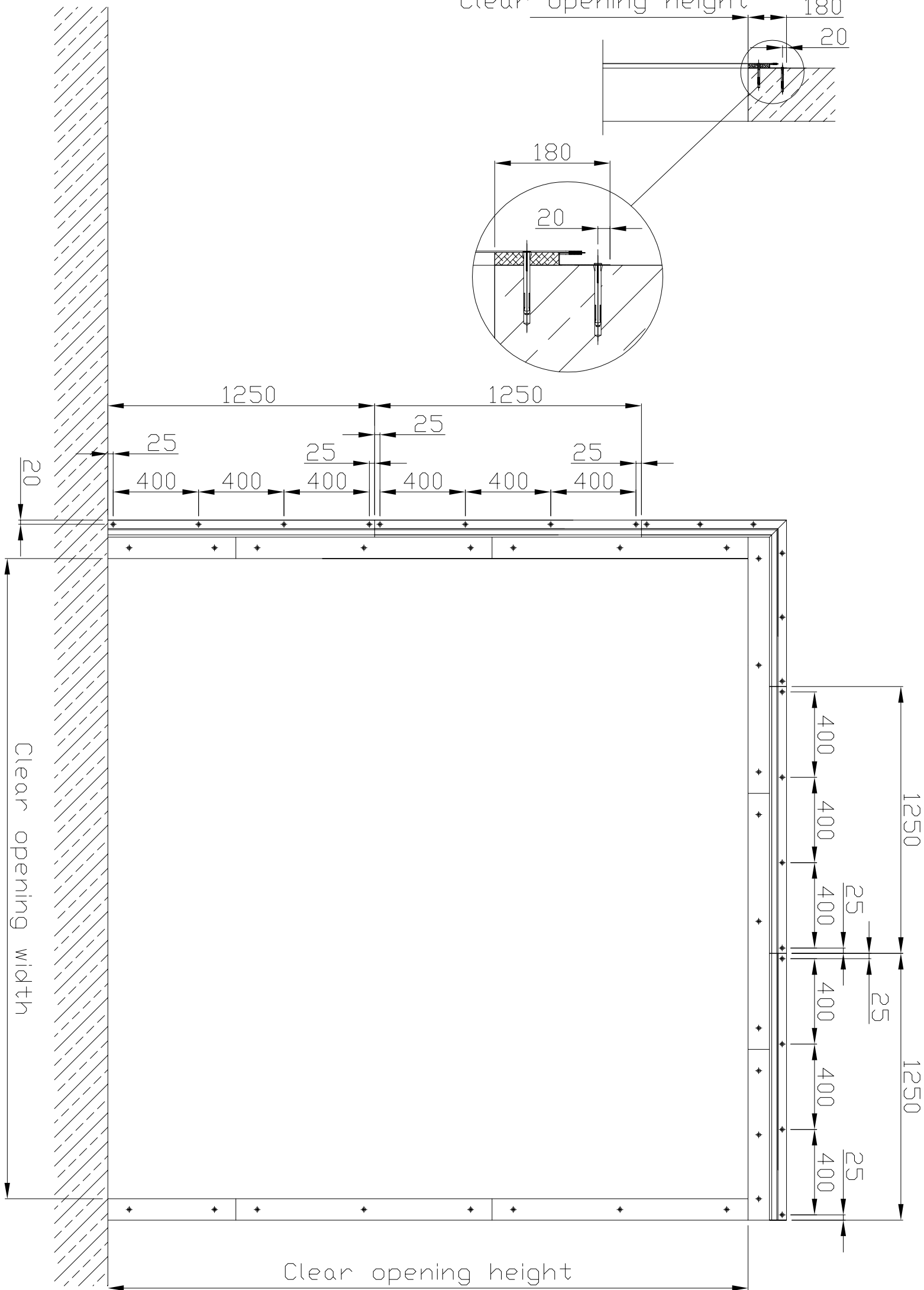
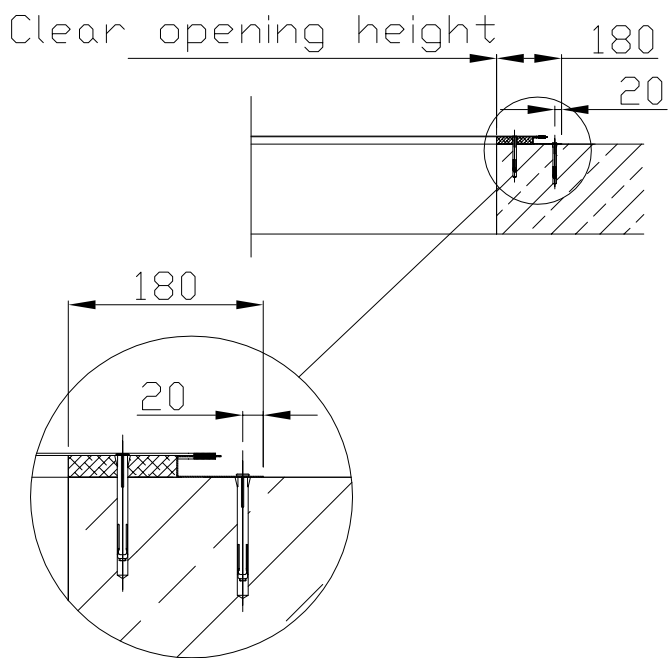


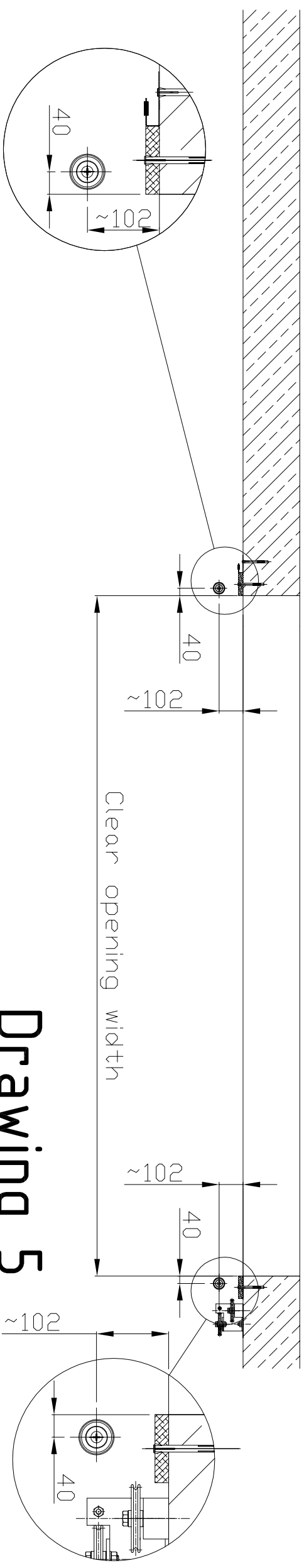
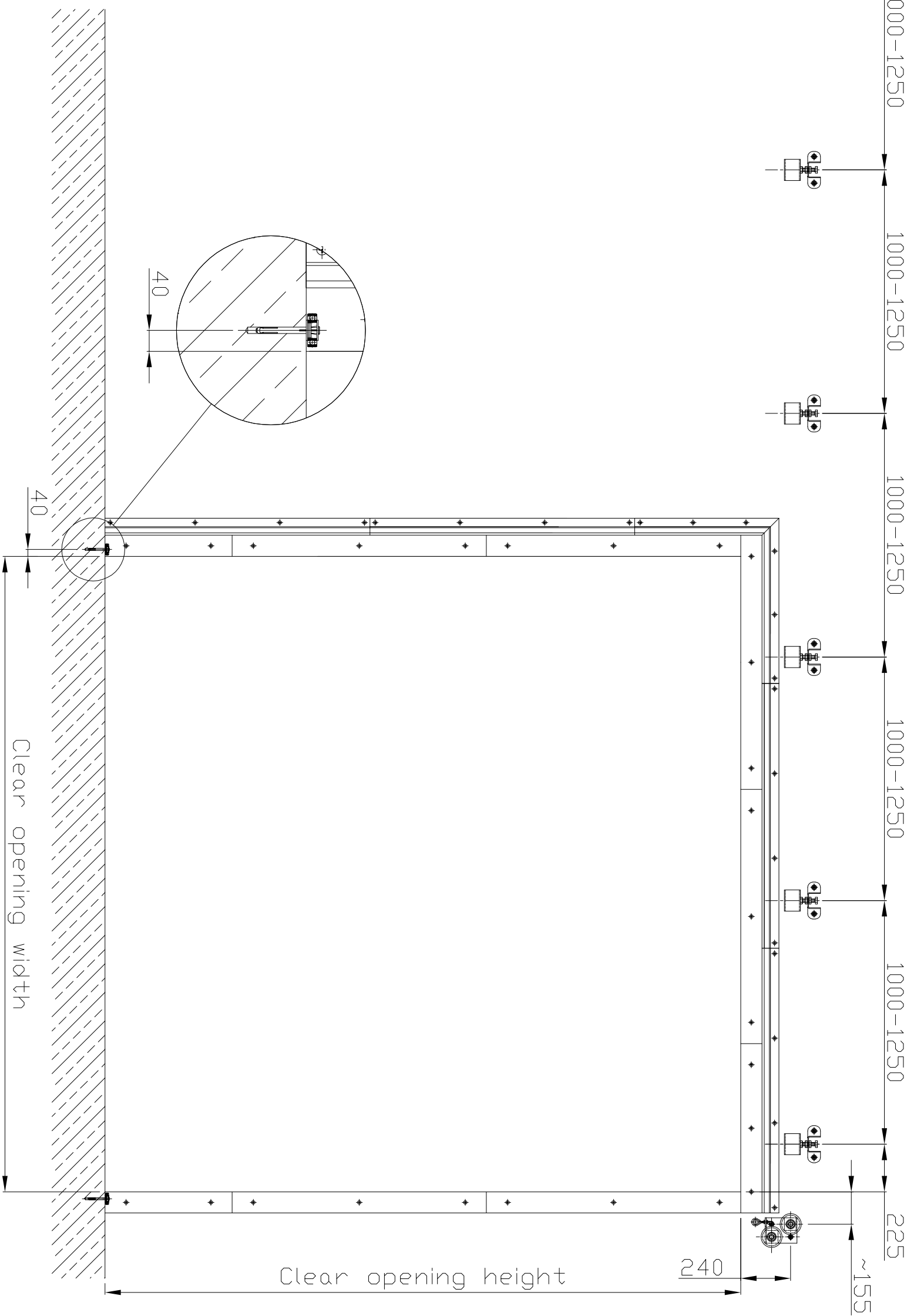
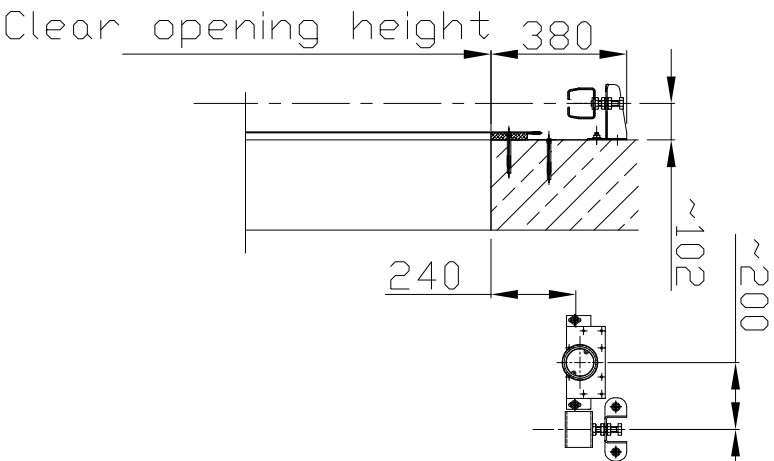
Gluing the labyrinth profile with
intumescent seal PROMASEAL PL.



Drawing 2

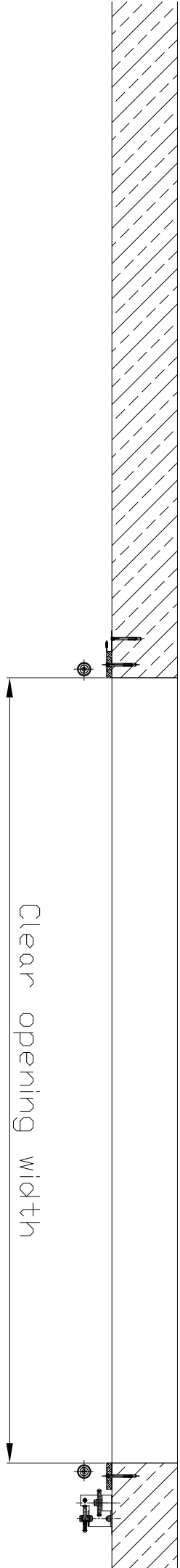
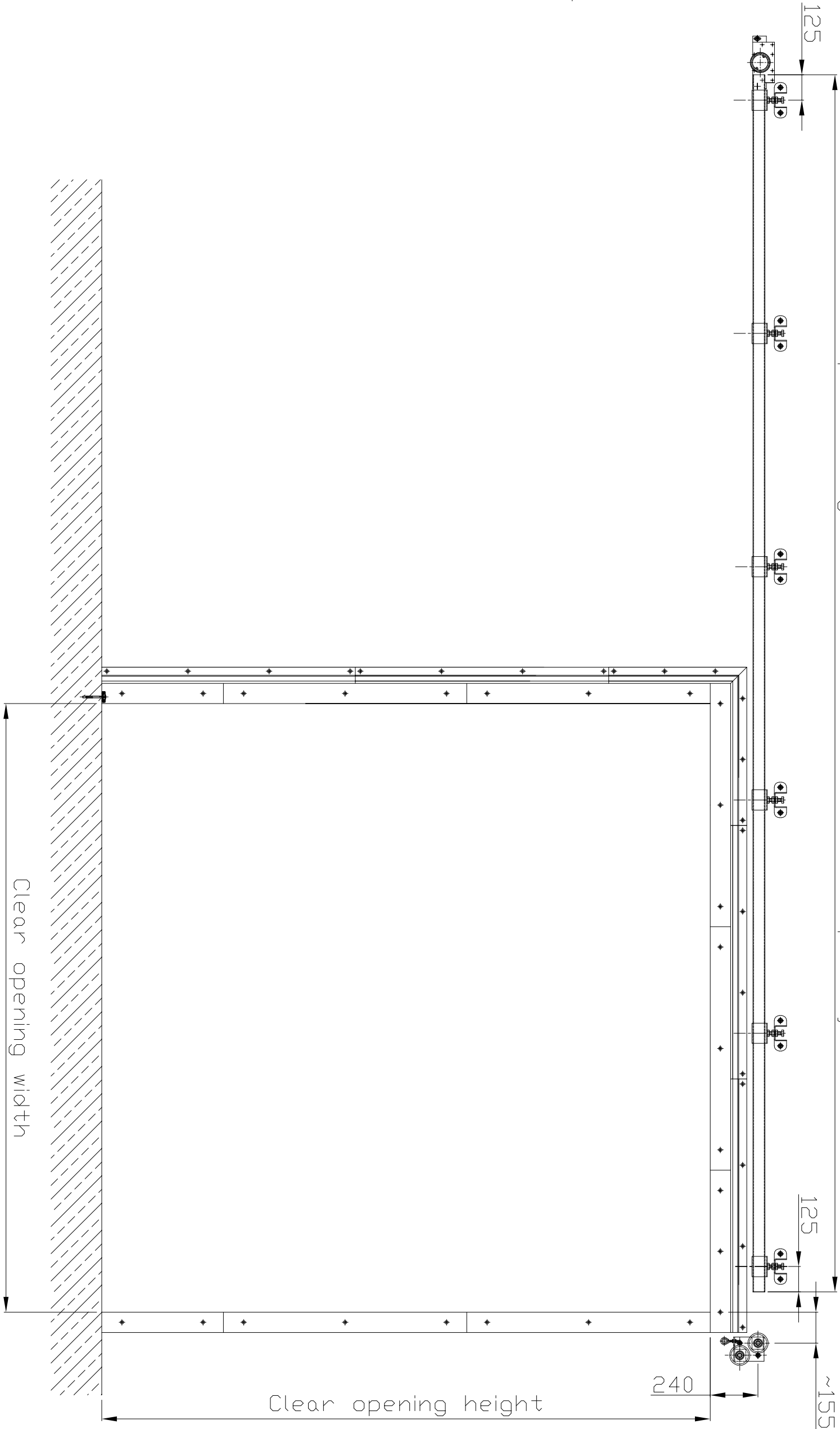
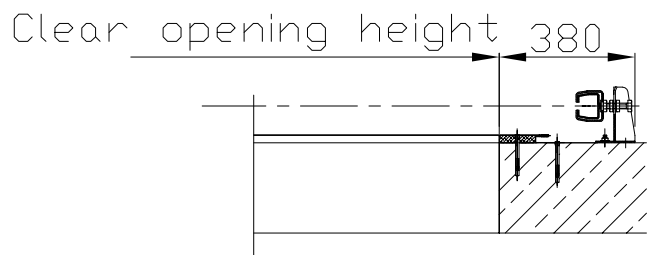






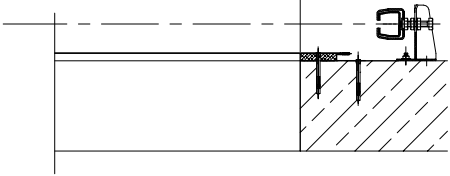
Drawing 5

Depends on gate's dimension and consoles quantity.

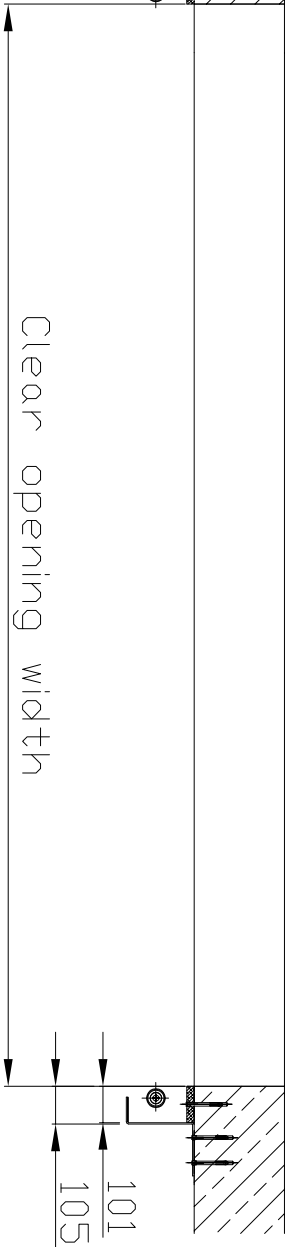


Drawing 6

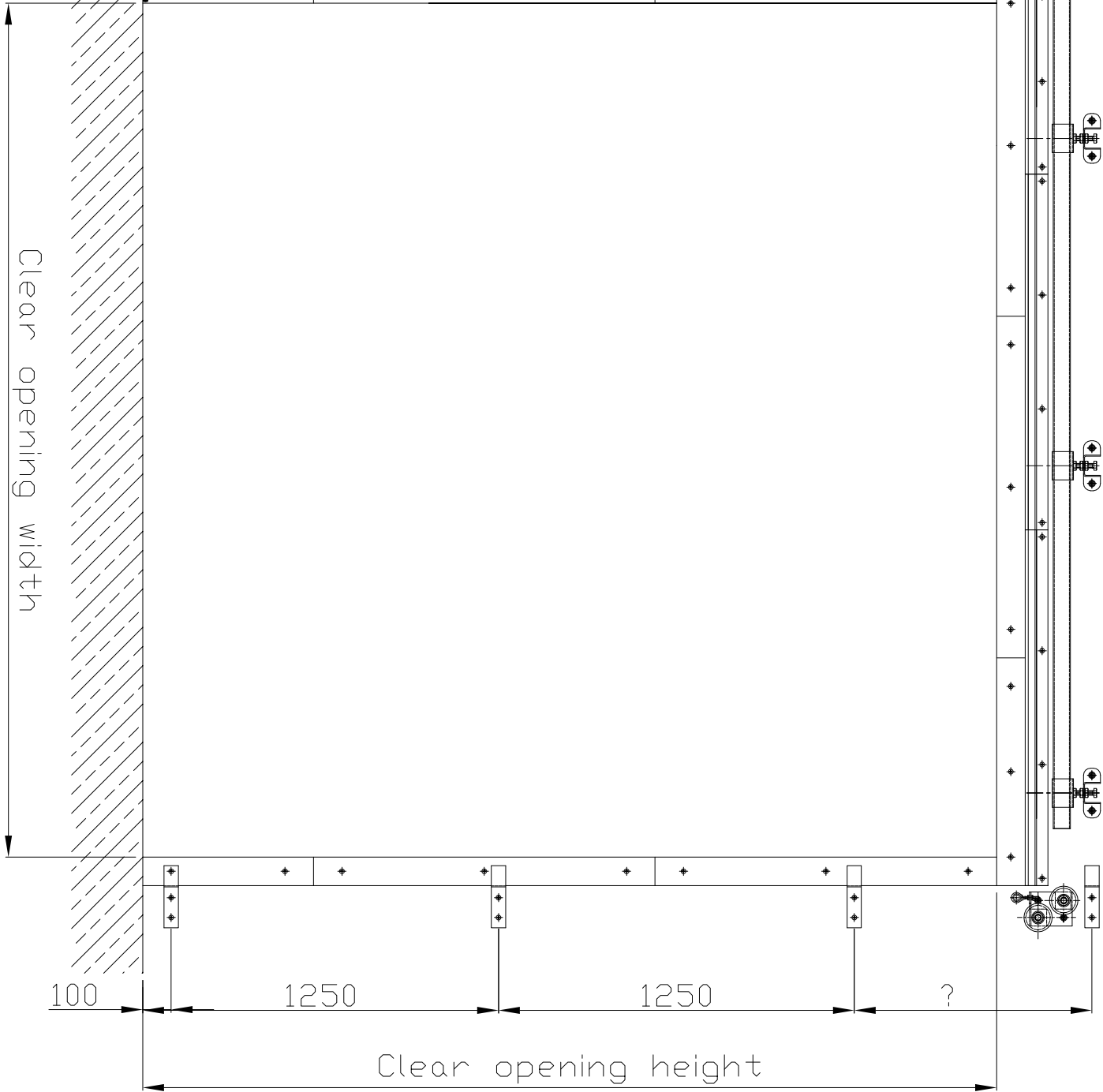
Clear opening height



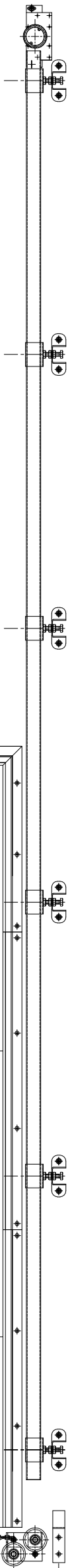
Clear opening width

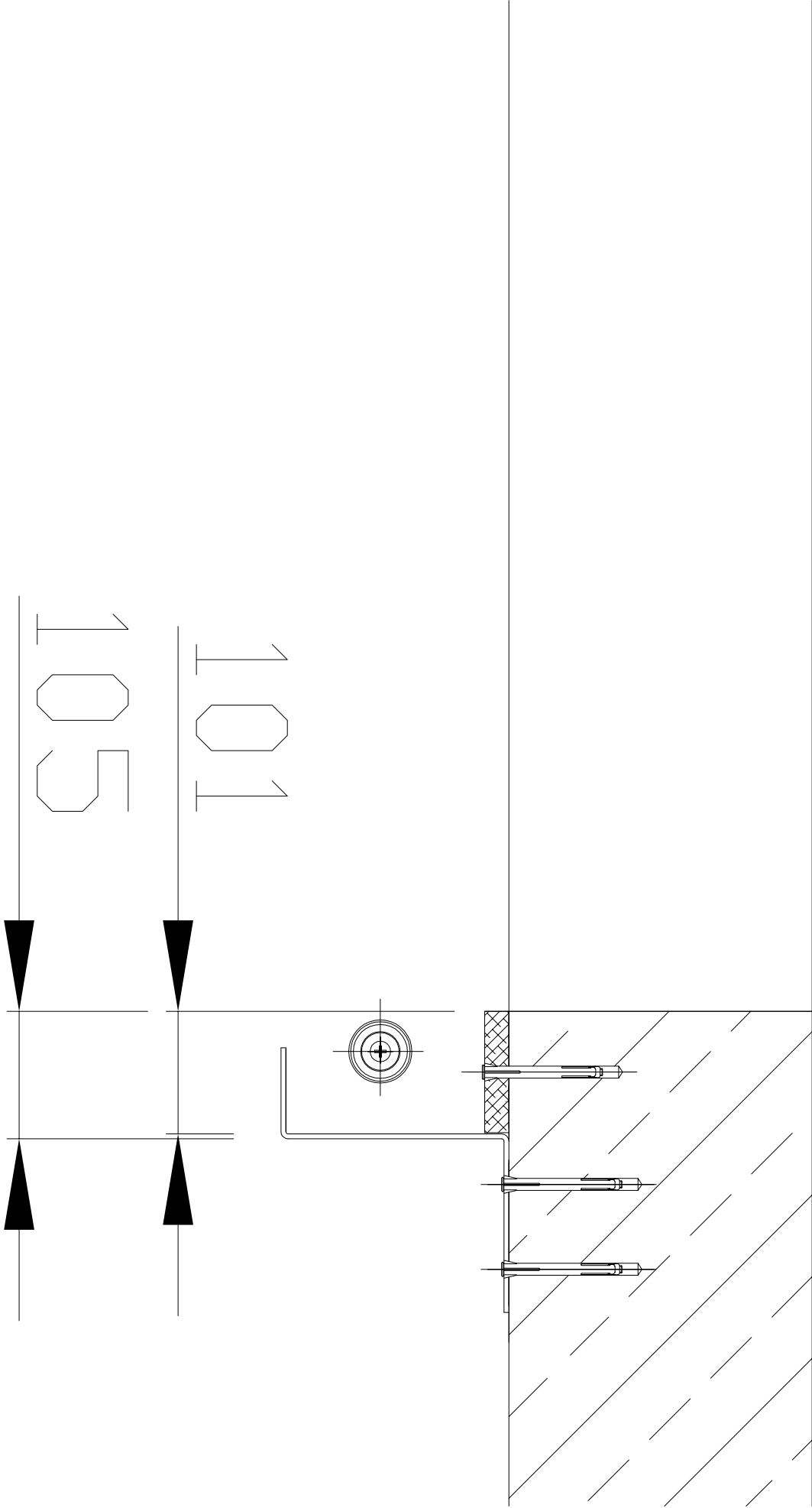


Clear opening width

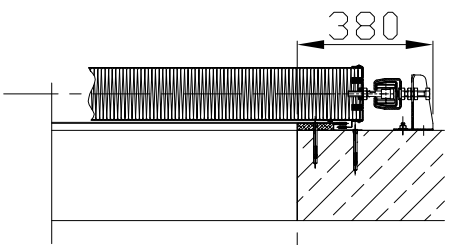


Clear opening height

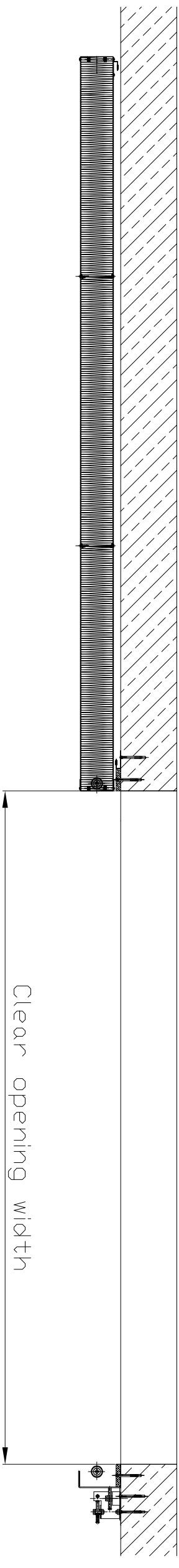
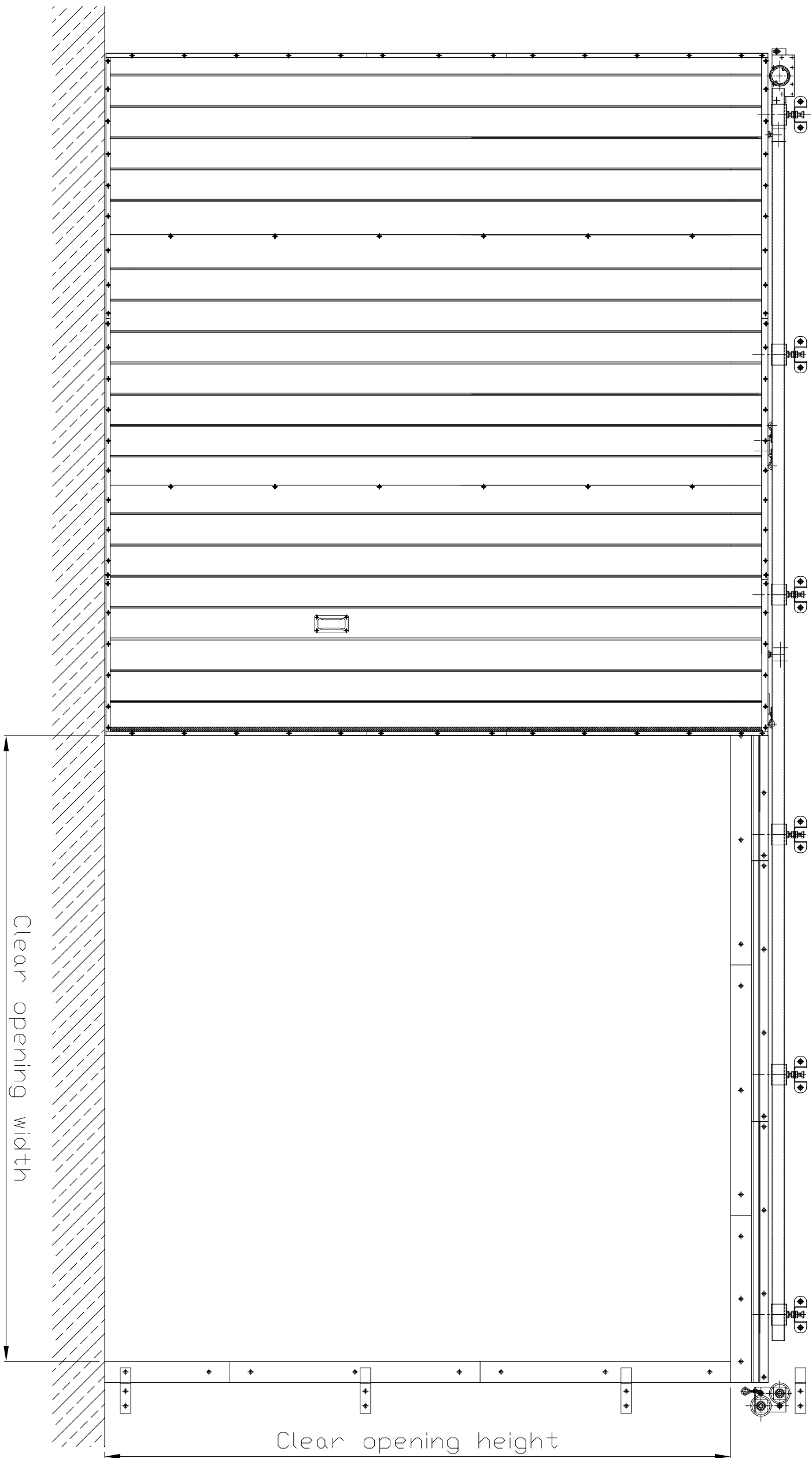




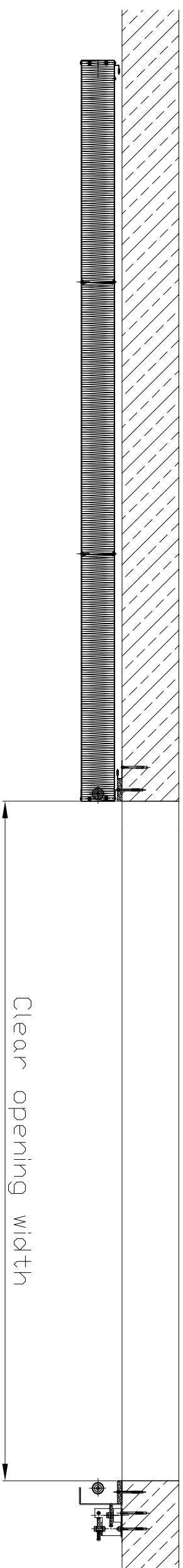
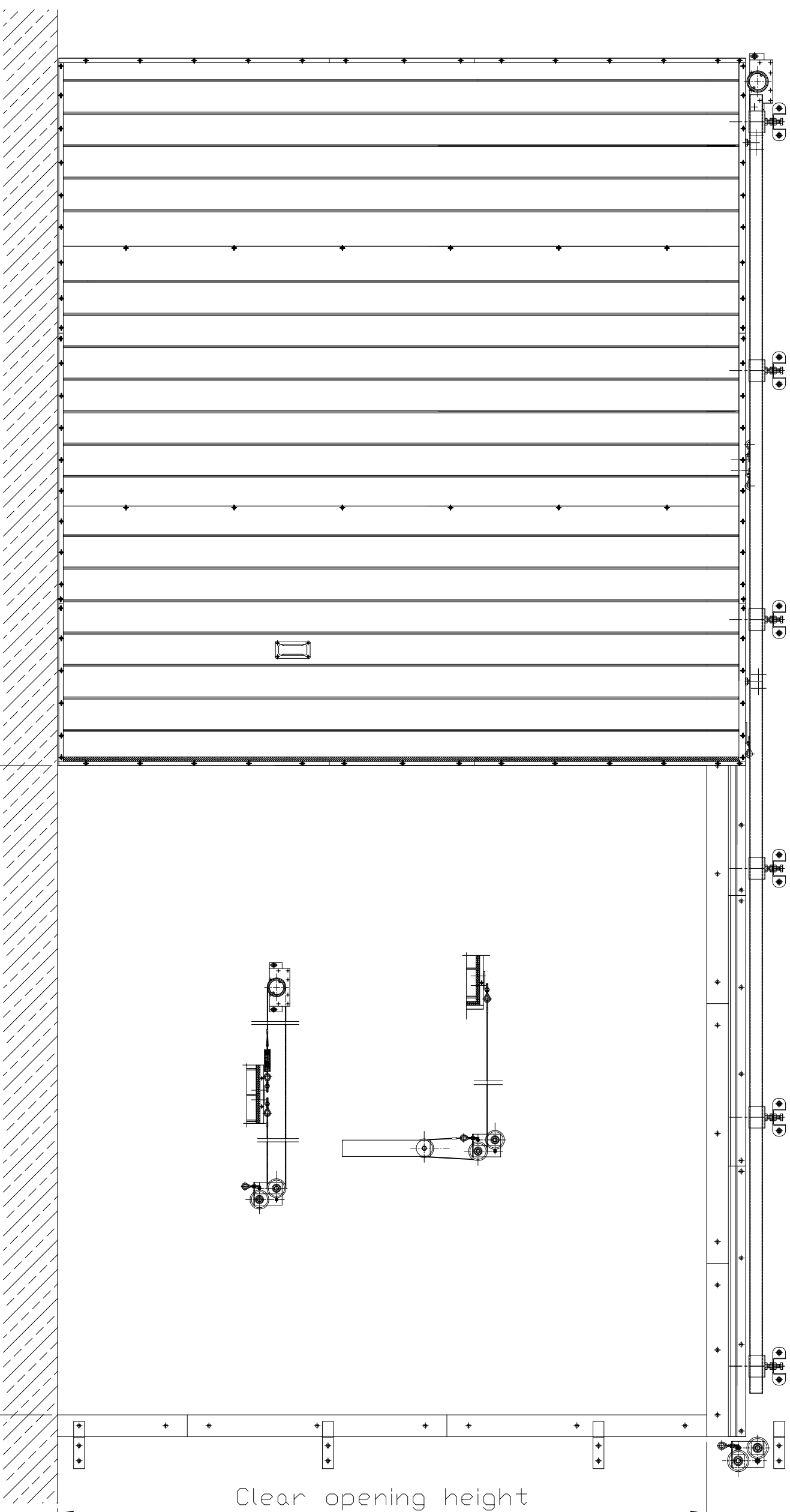
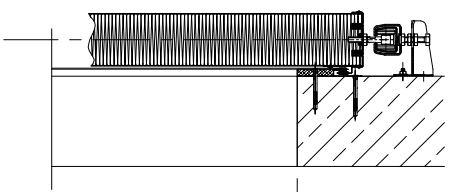
Drawing 7a



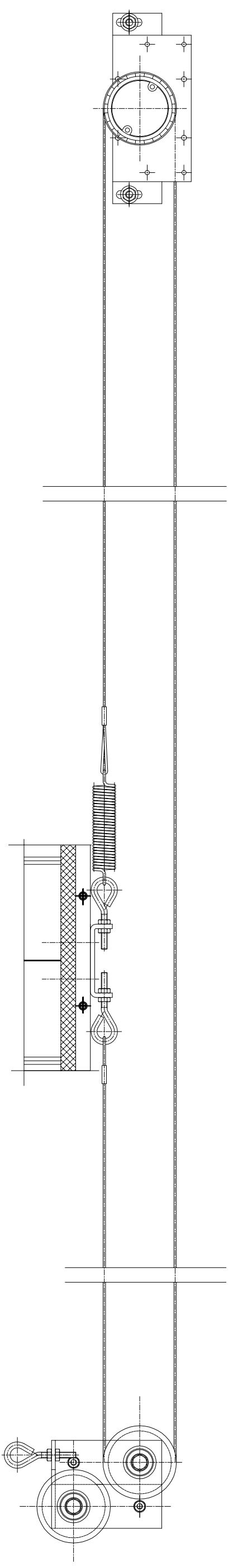
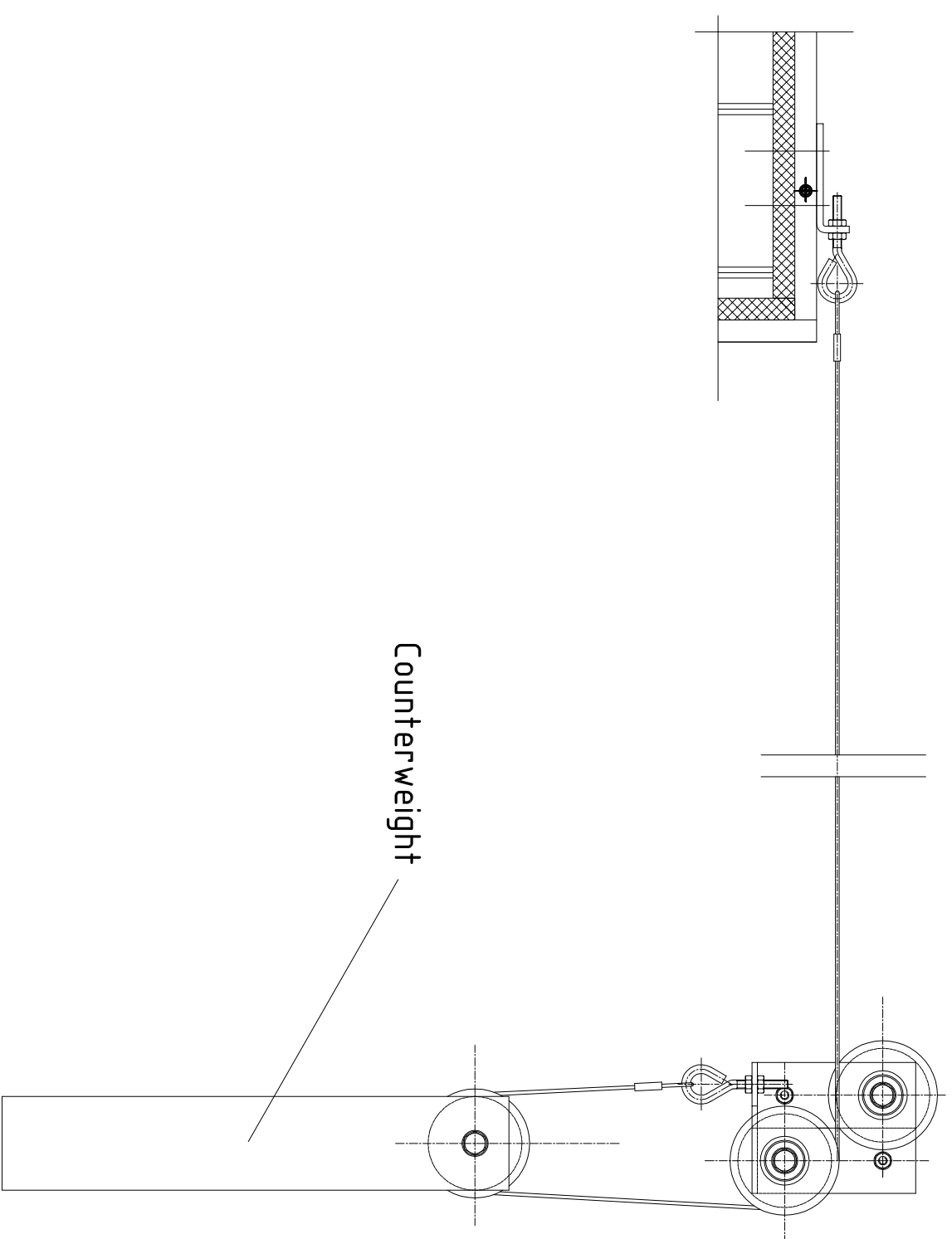
Clear opening height



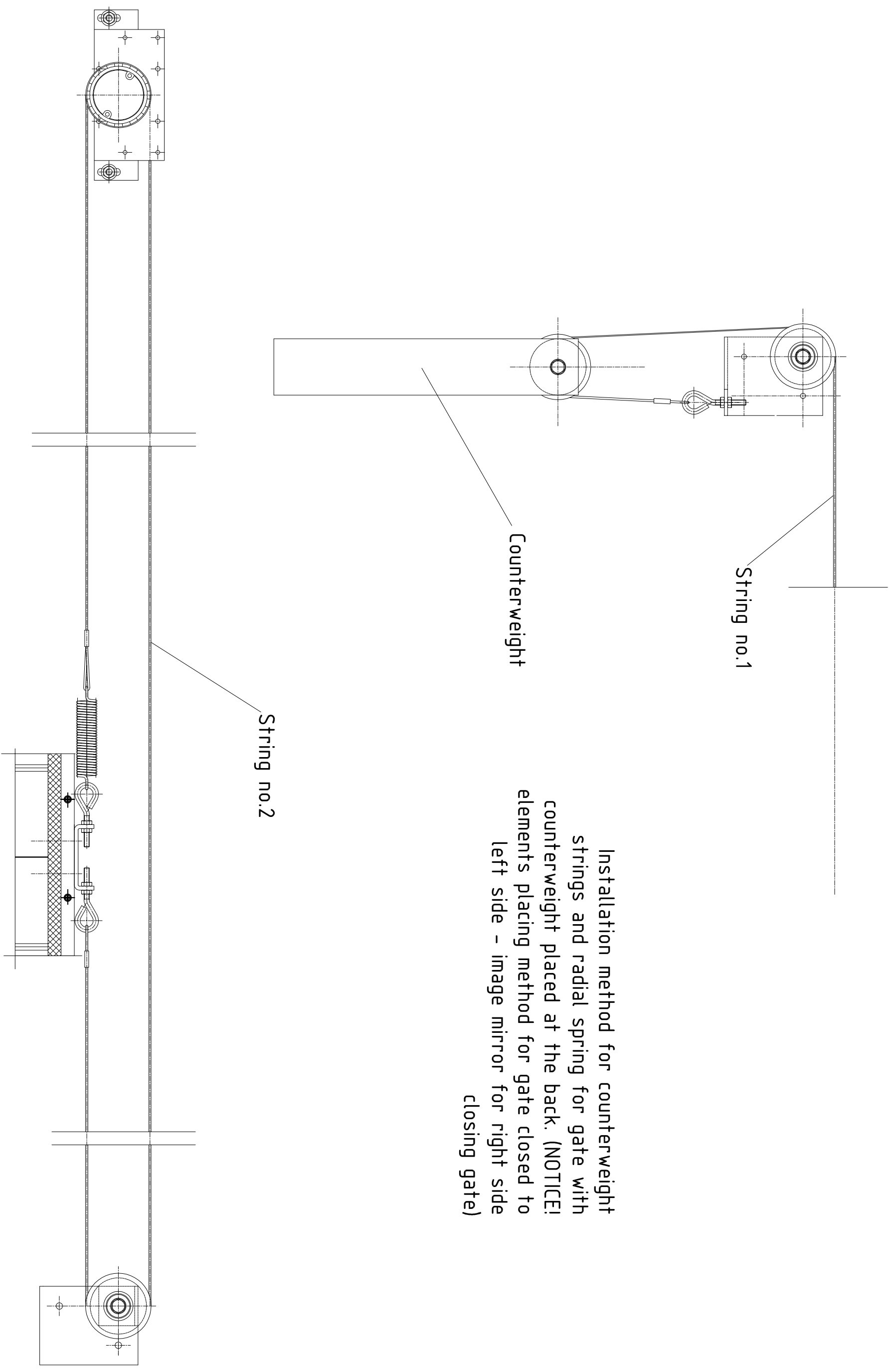
Drawing 8



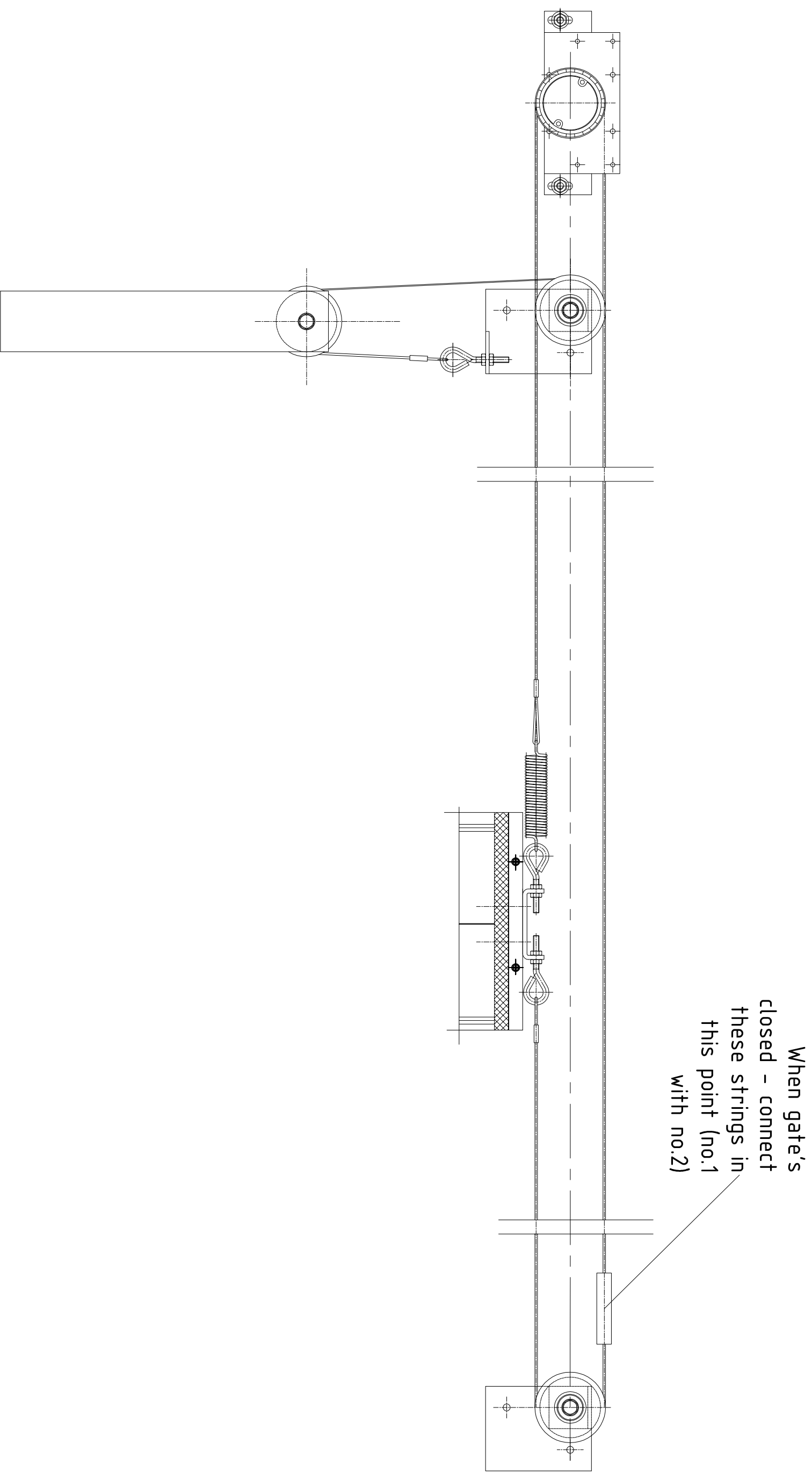
Drawing 9



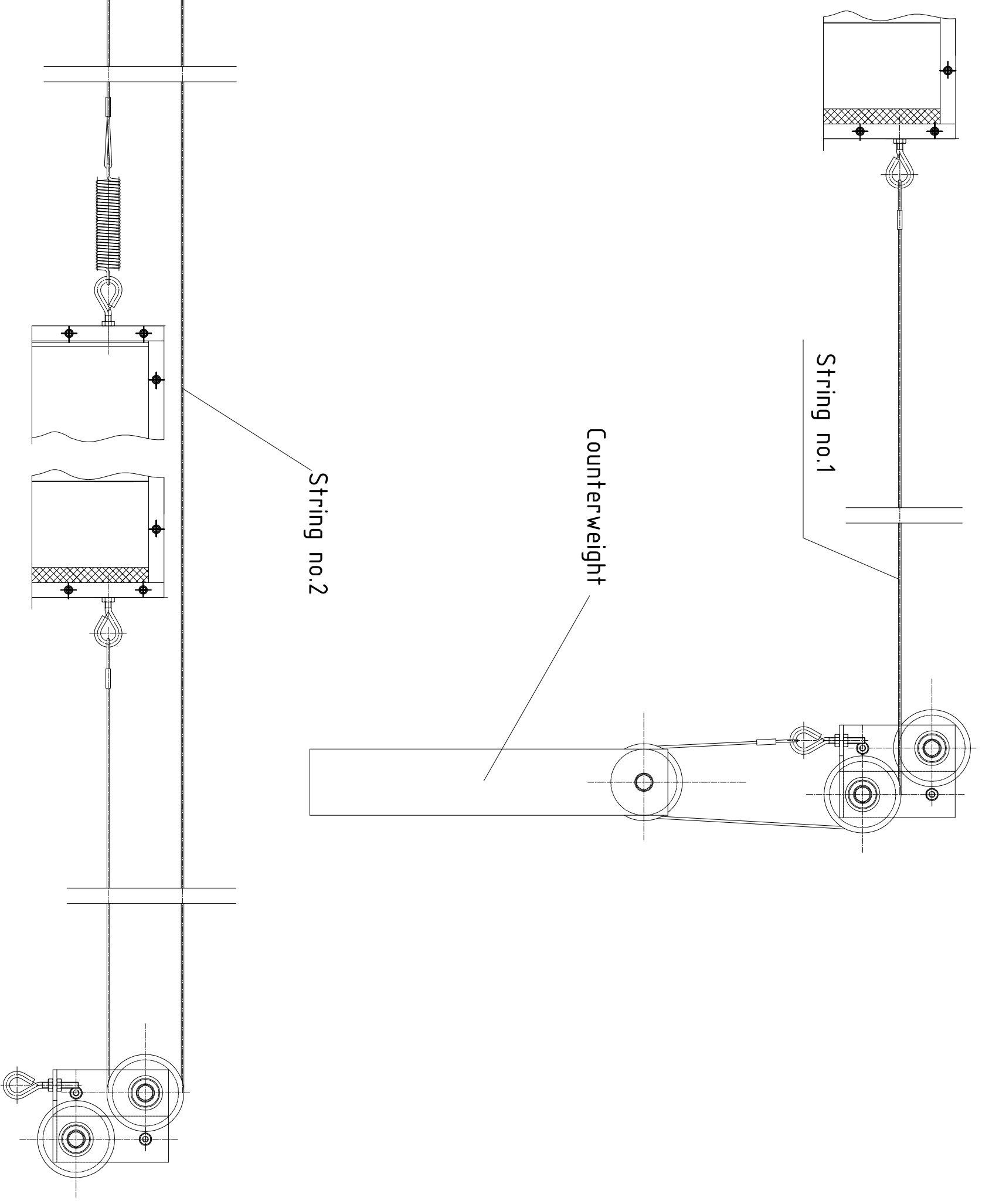
Drawing 9a
Solution for gate with counterweight at the front (standard)



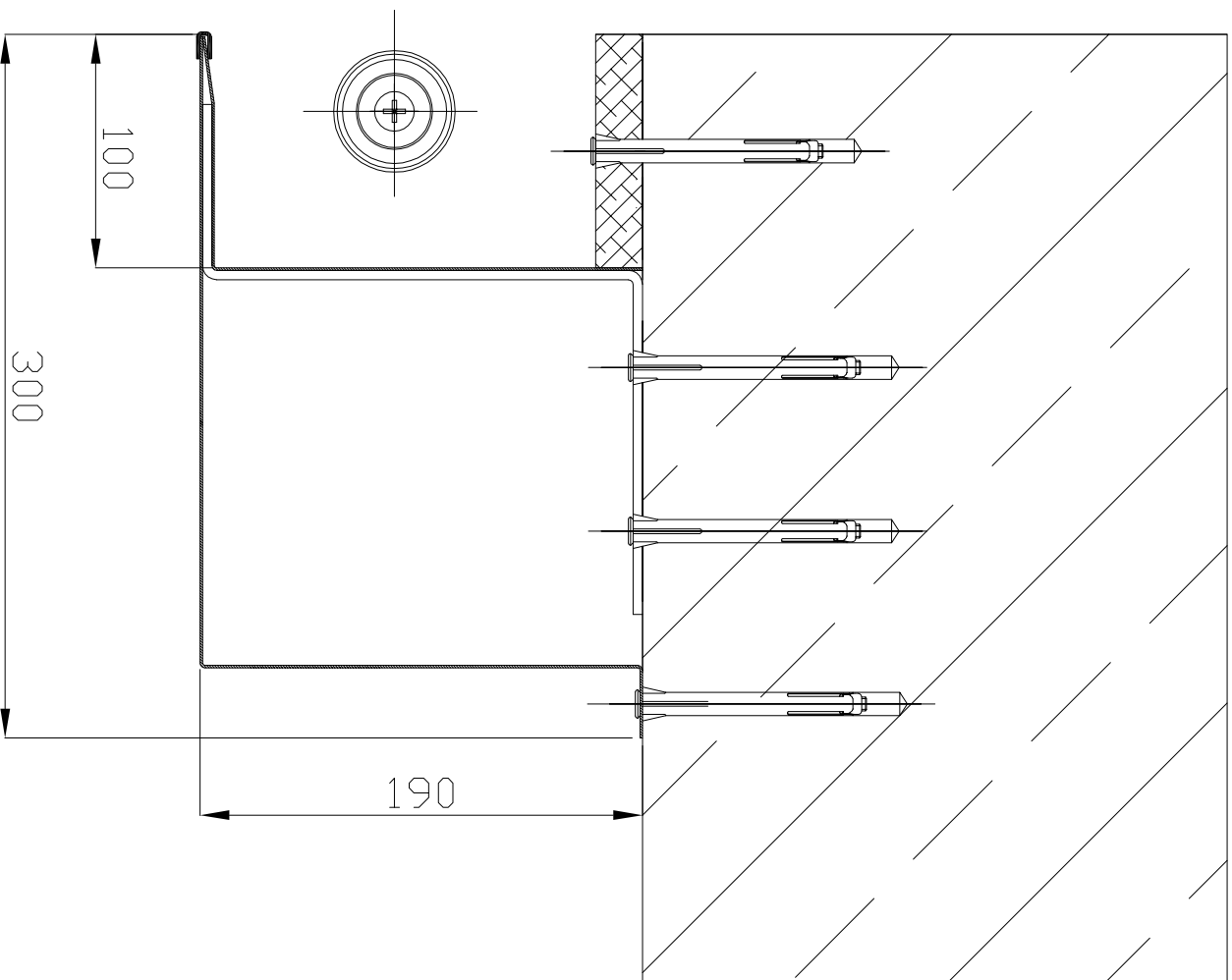
Drawing 9b - 1
Solution for gate with counterweight at the back.



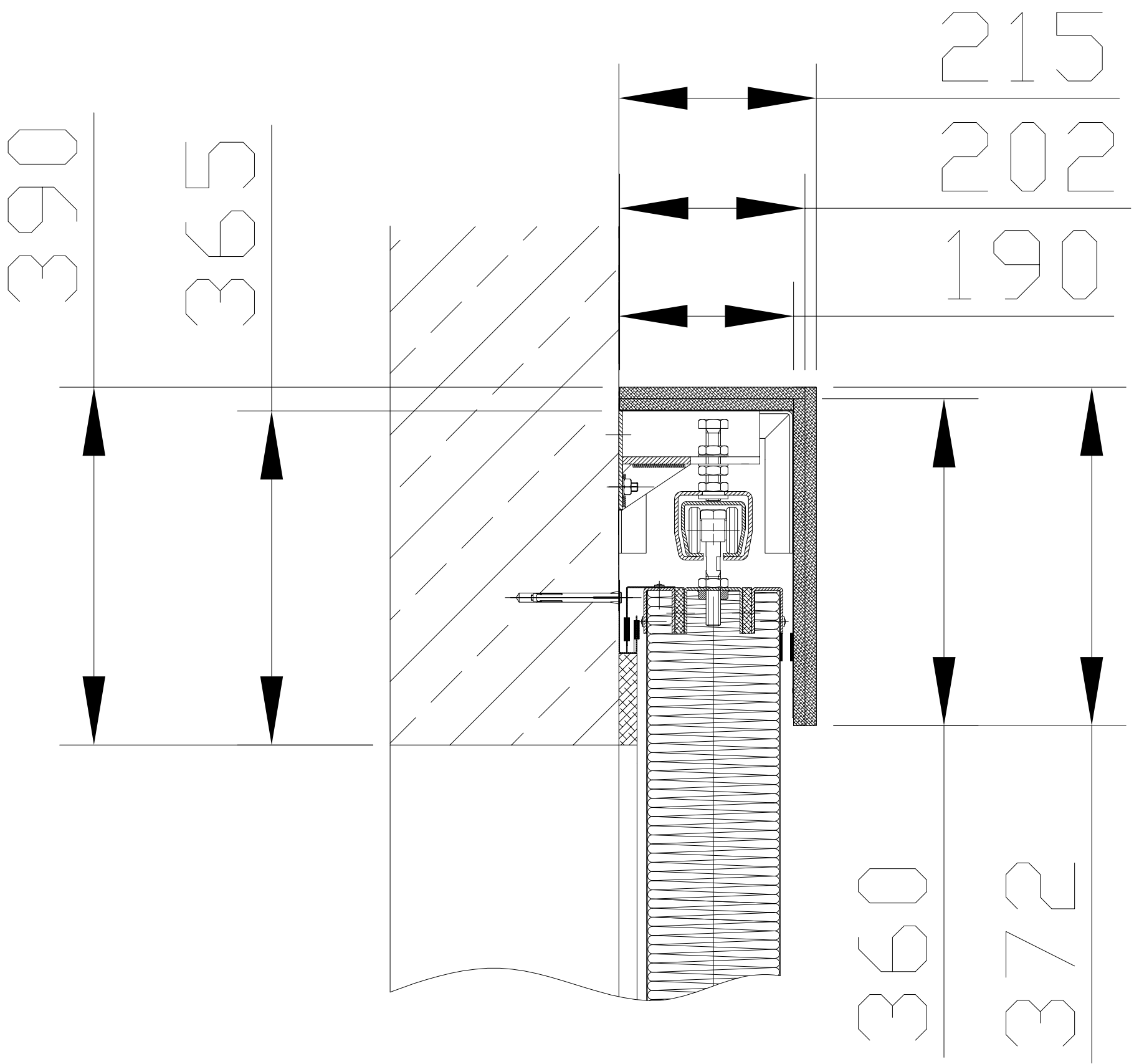
Drawing 9b - 2
Solution for gate with counterweight at the back -CONNECTION



Drawing 9c
Solution for gate with counterweight
at the front – for low lintel only



Drawing 10a



Drawing 11