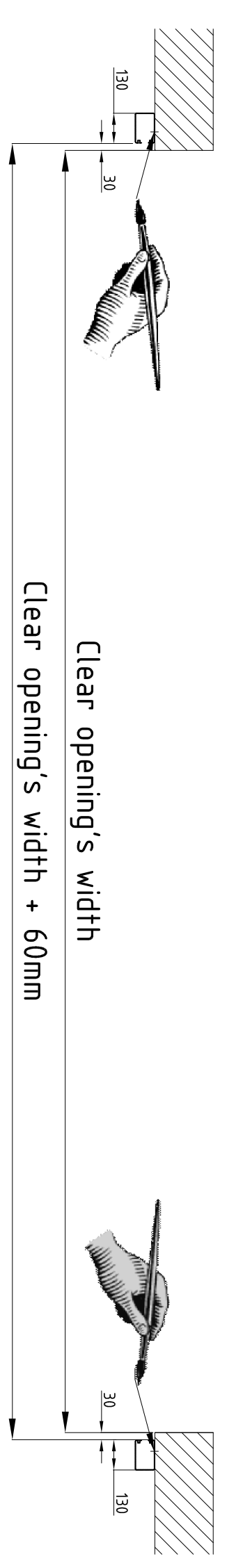
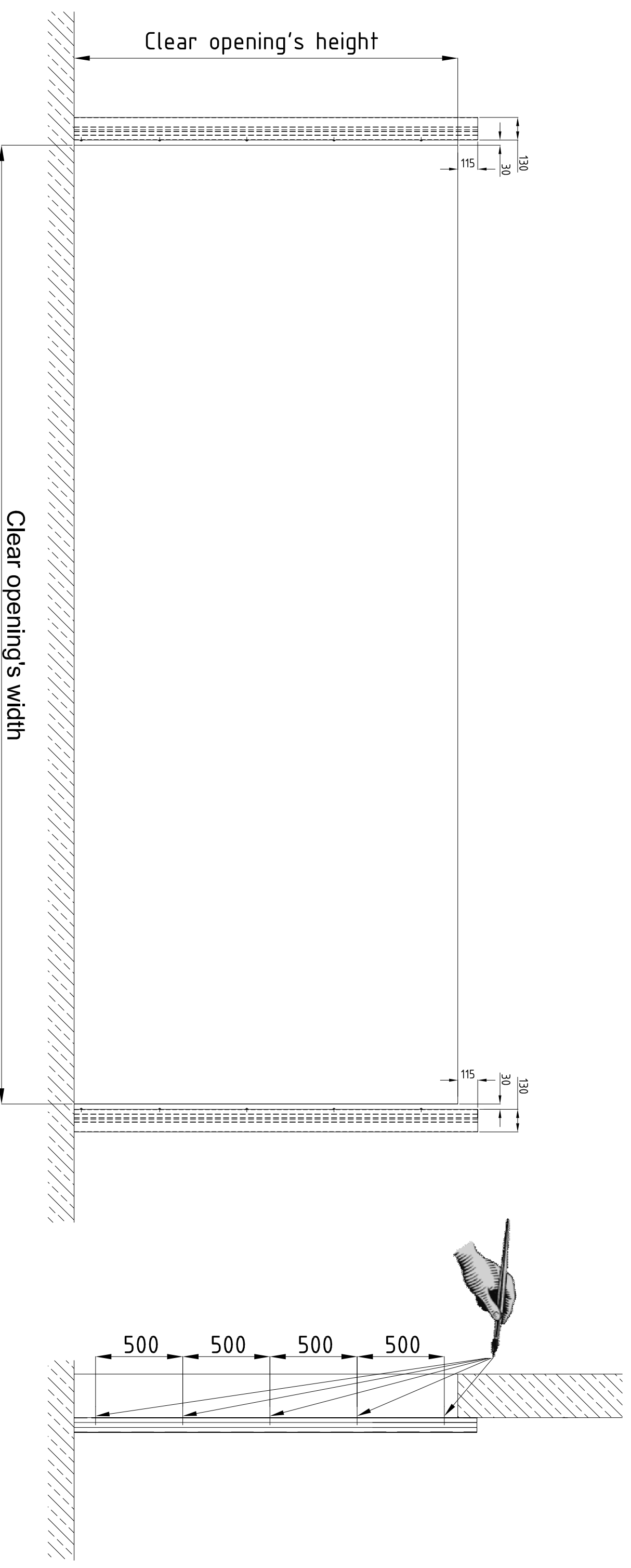
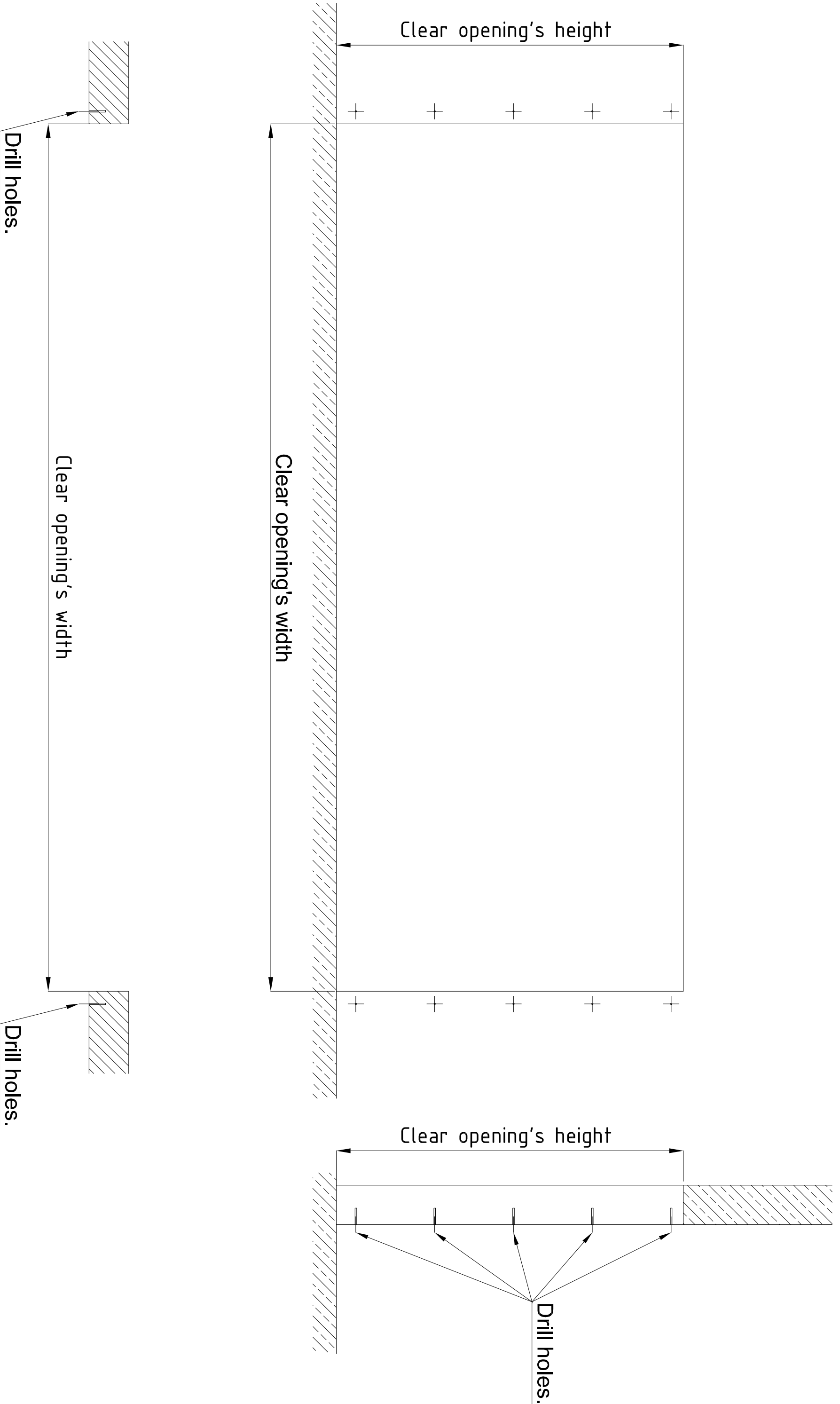


\*\*\* DRAWING 1 \*\*\*  
Curtains opening dimension check





Drill holes.

Clear opening's width

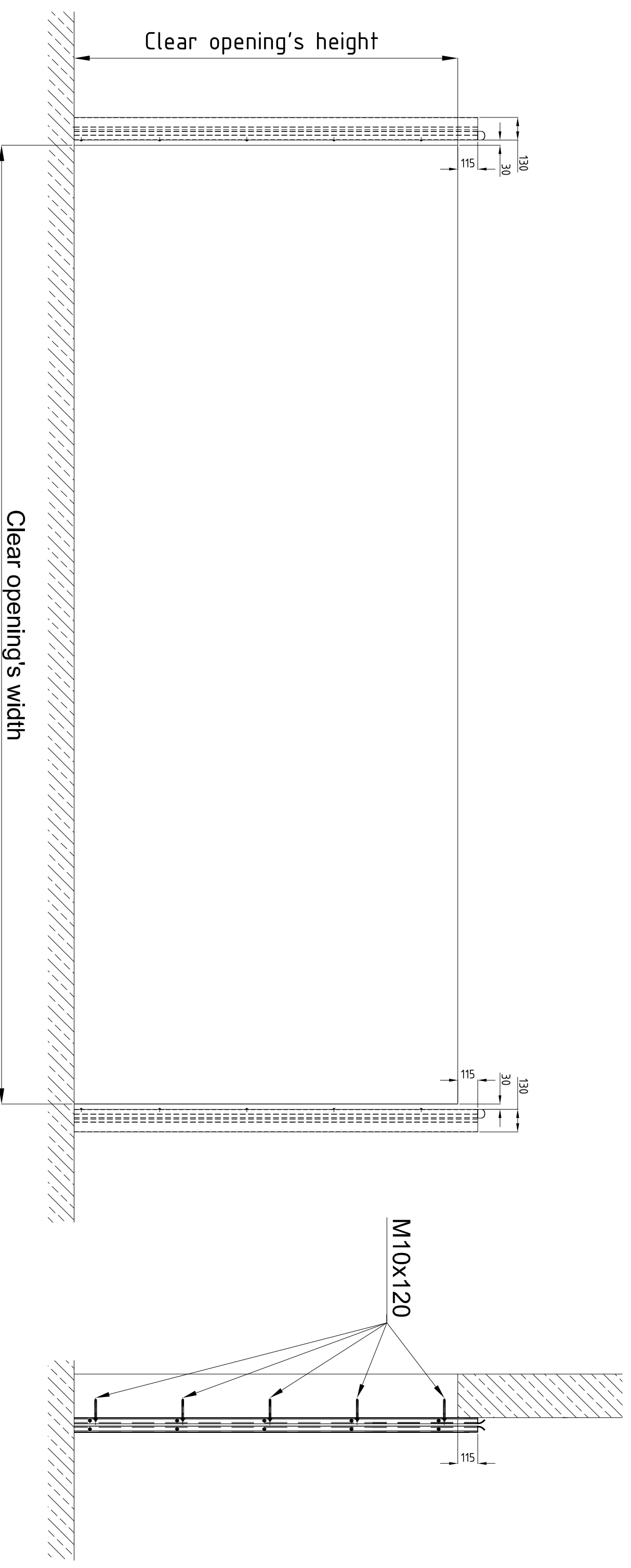
Drill holes.

Clear opening's height

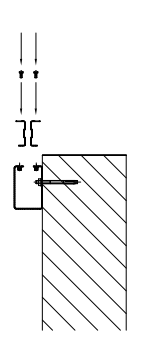
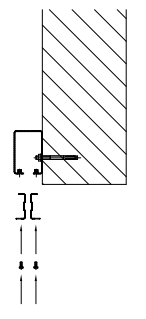
Clear opening's width

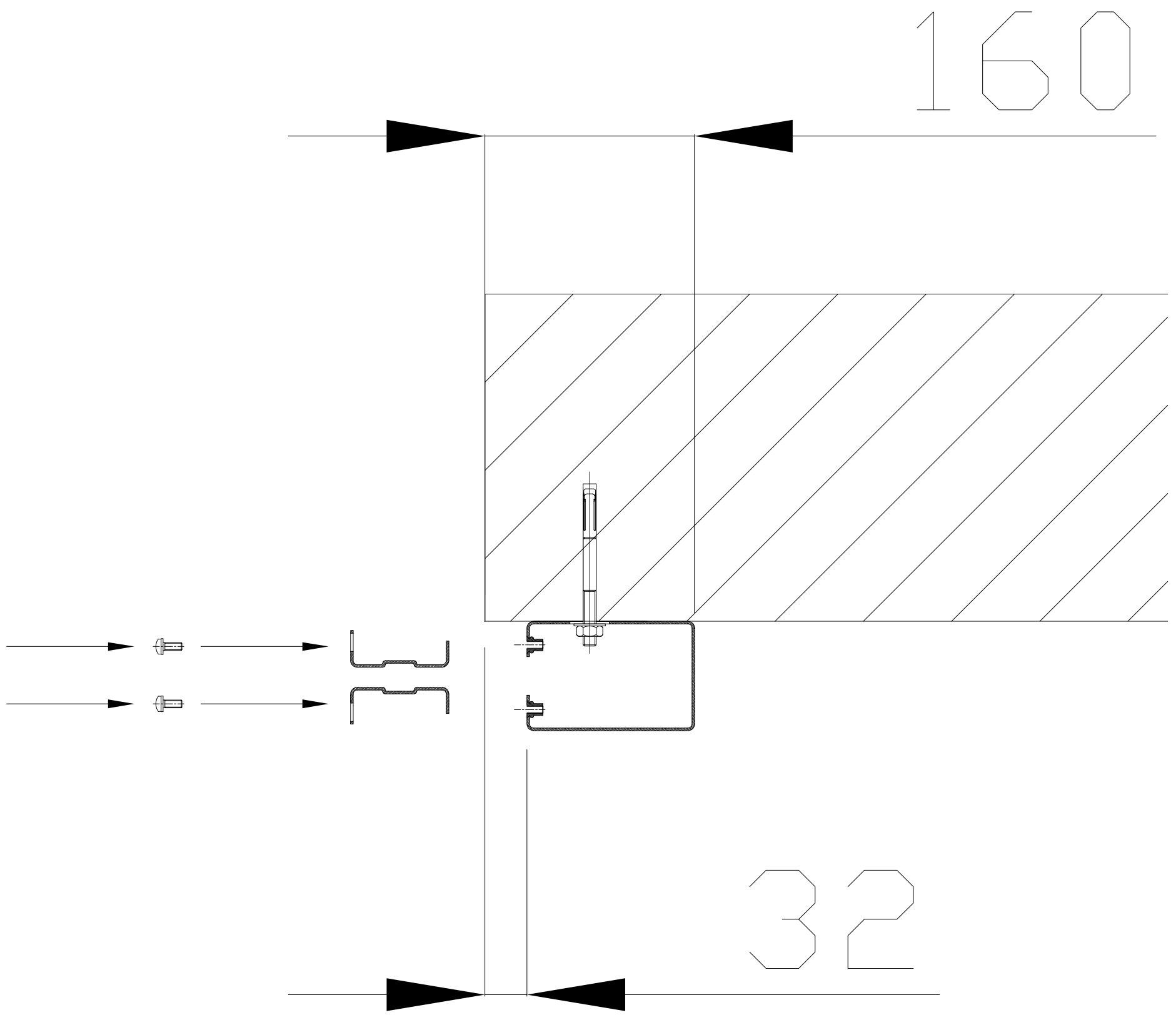
Clear opening's height

Drill holes.

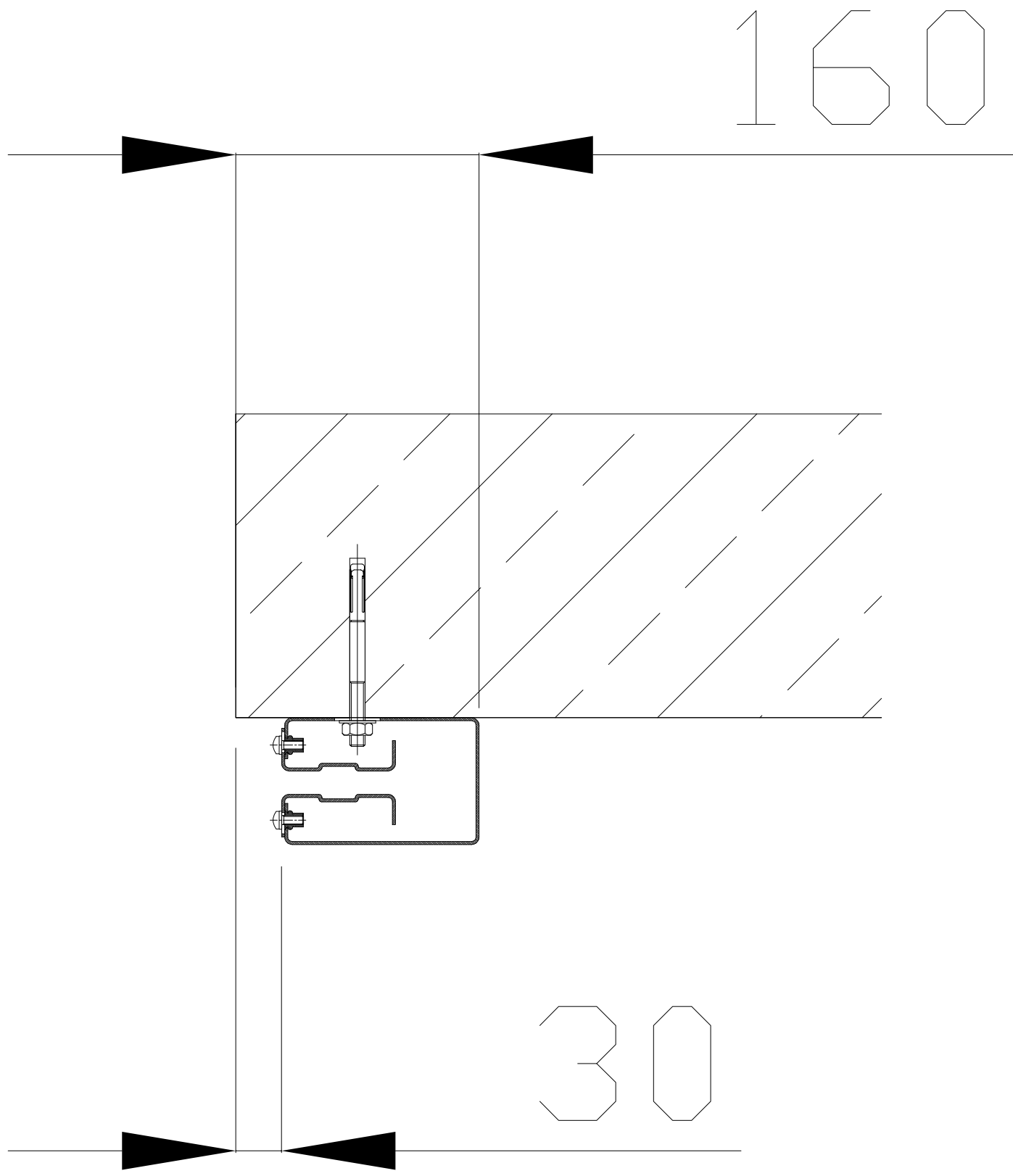


Installation guides

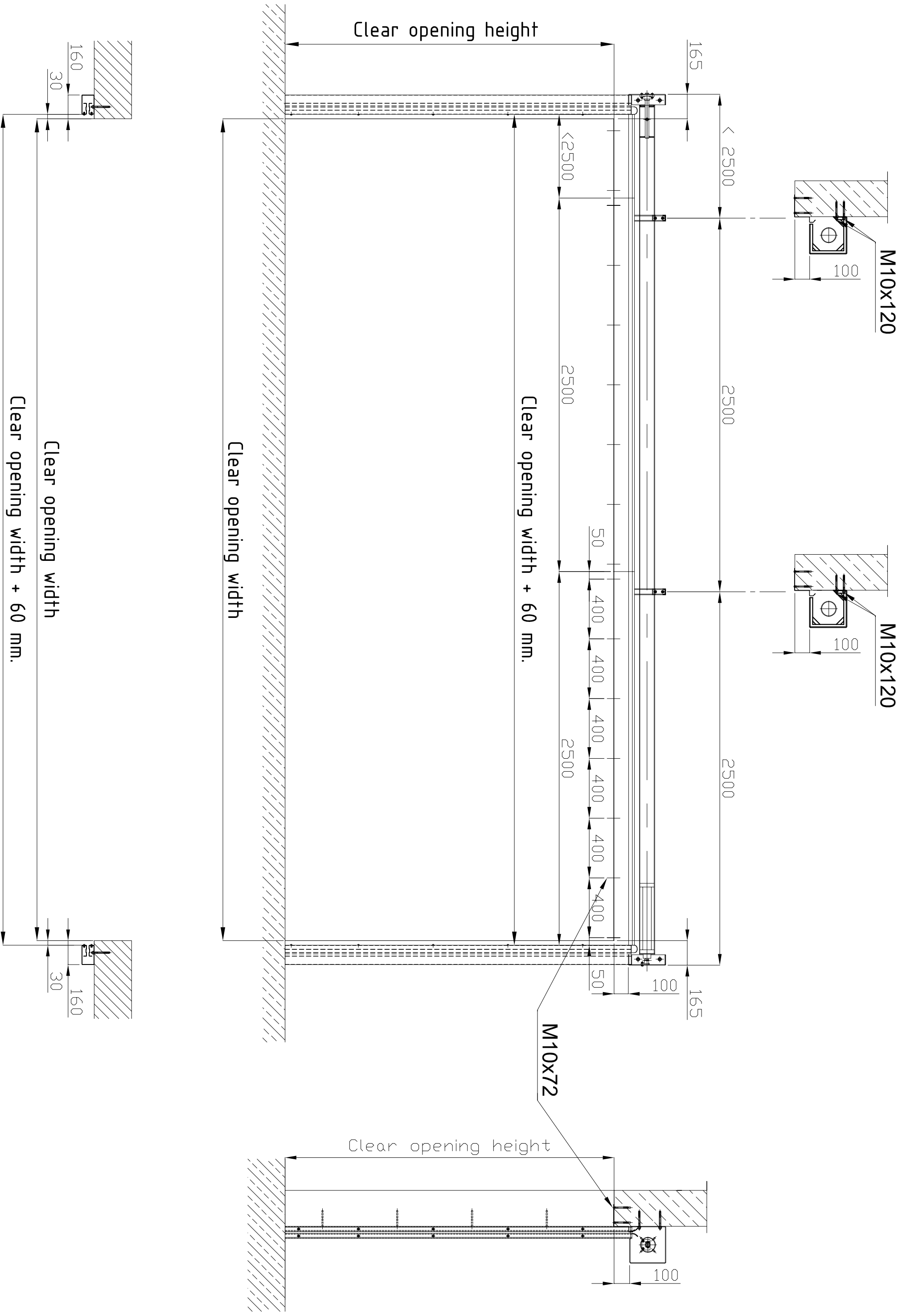




\*\*\* DRAWING 2c \*\*\*  
detail

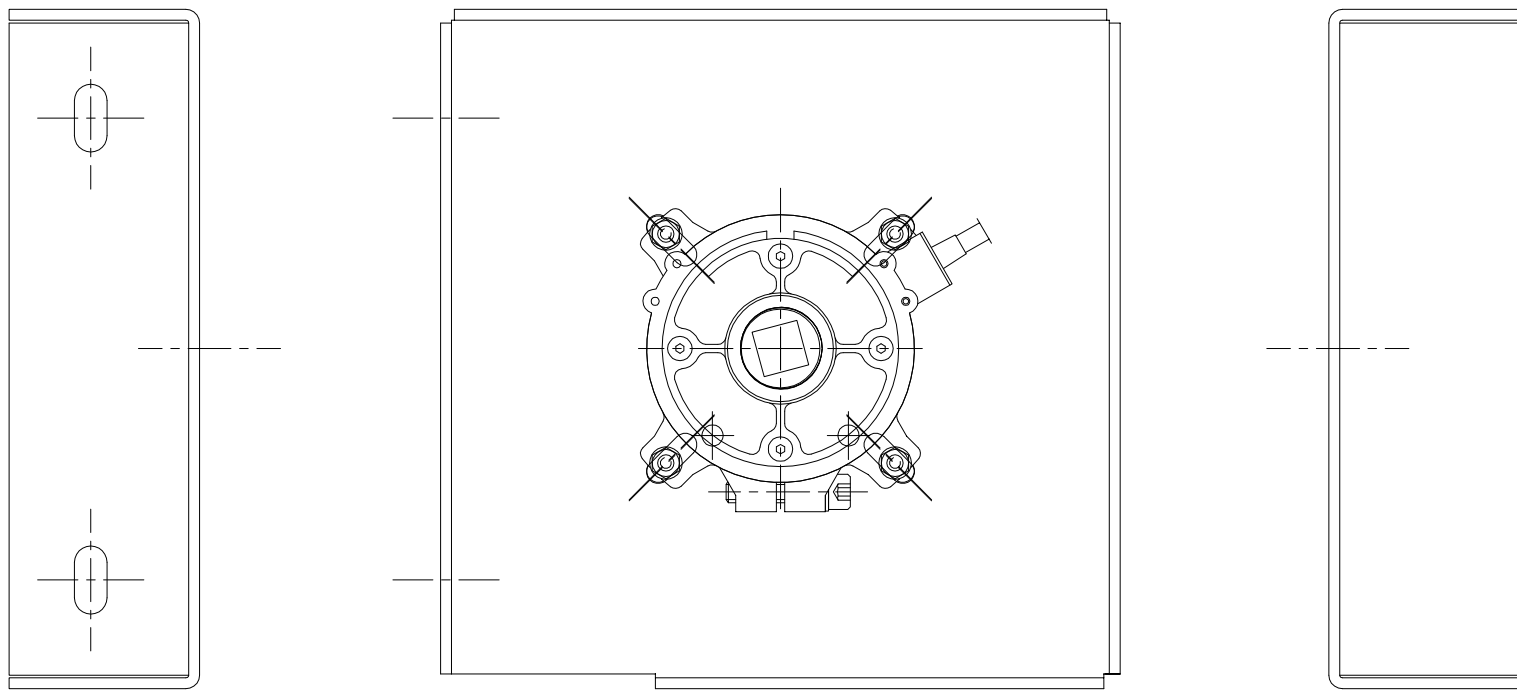


\*\*\* DRAWING 2d \*\*\*  
detail

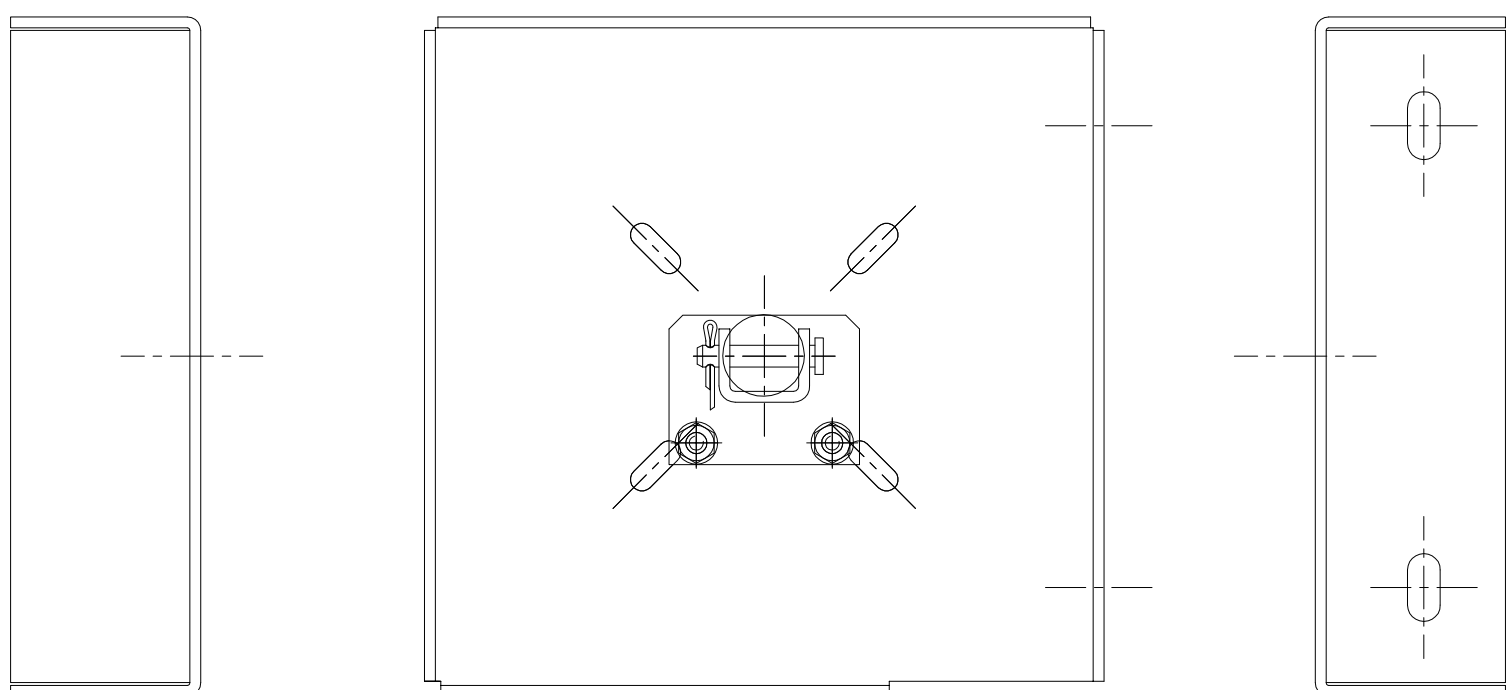


\*\*\* Drawing no.3 \*\*\*

## Console no. 1 - catching device side

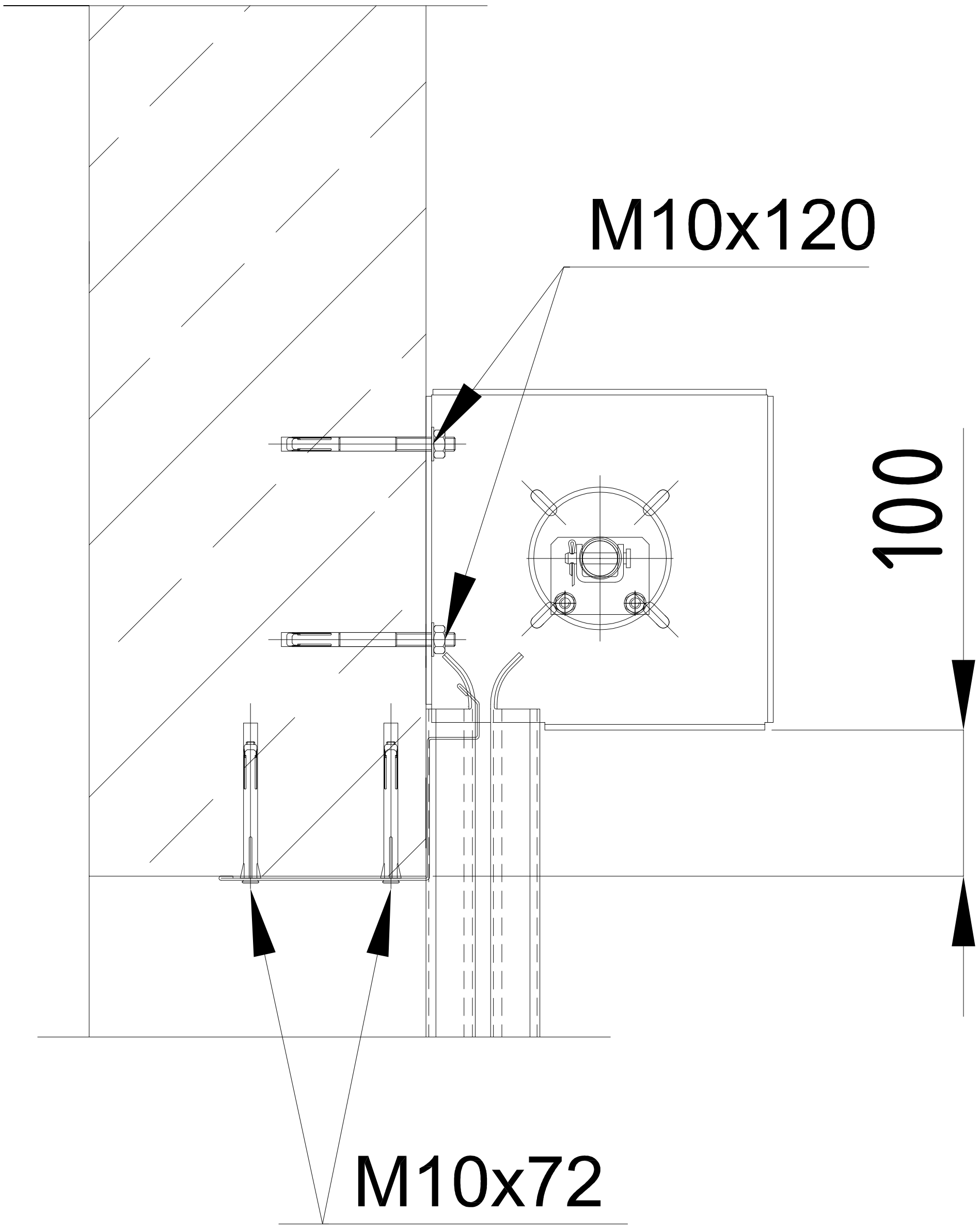


## Console no. 2 - drive unit side



\*\*\* Drawing 3a \*\*\*  
Shaft's consoles

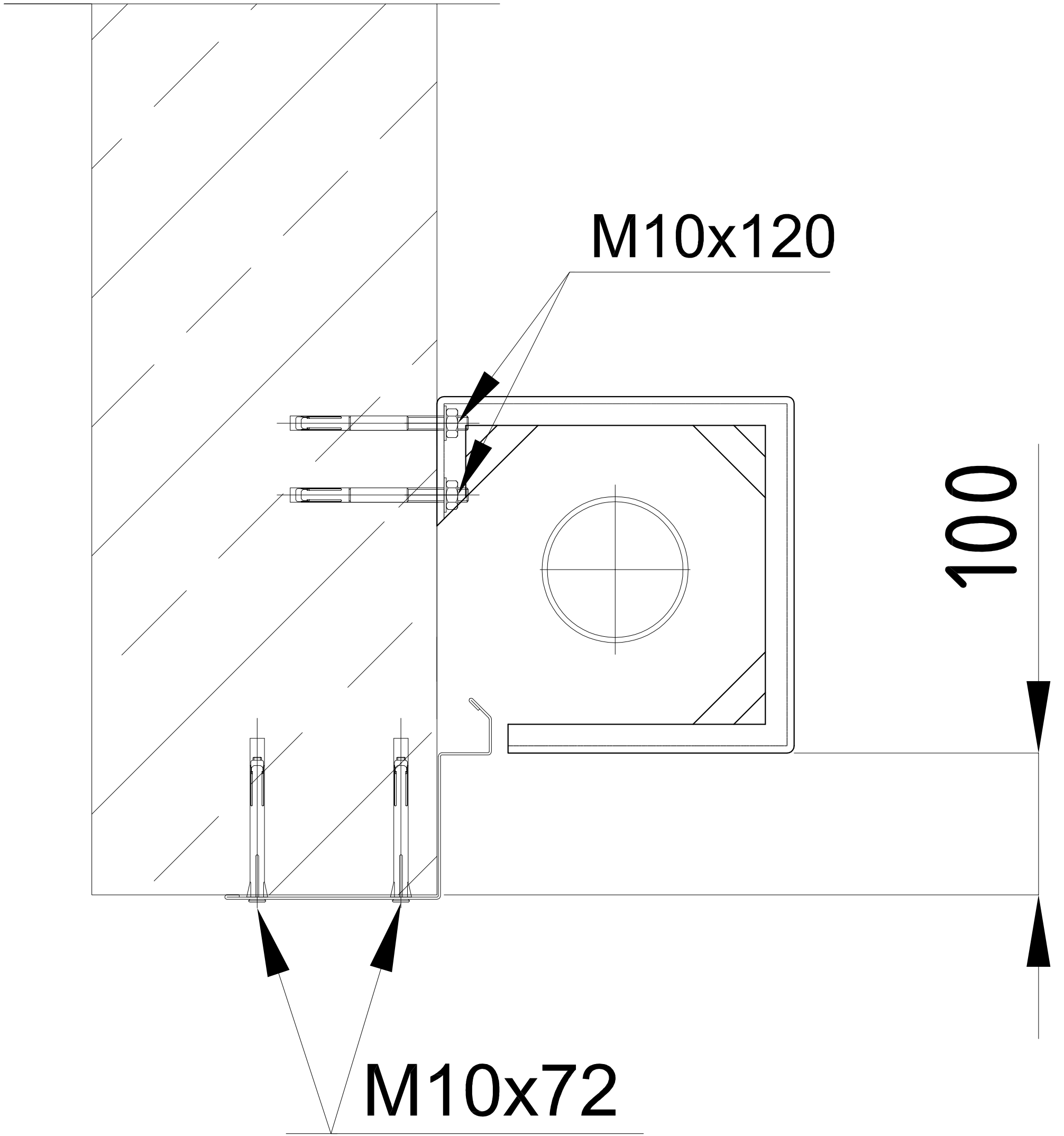




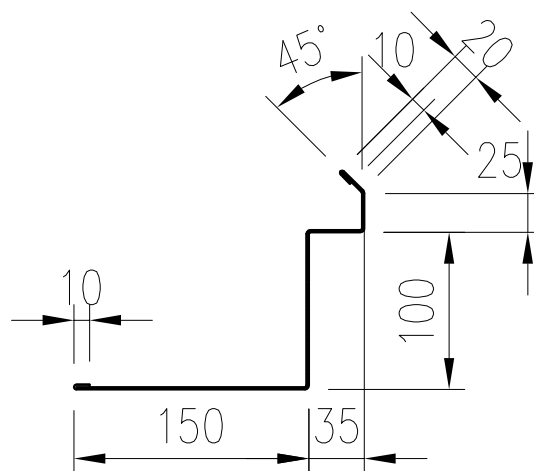
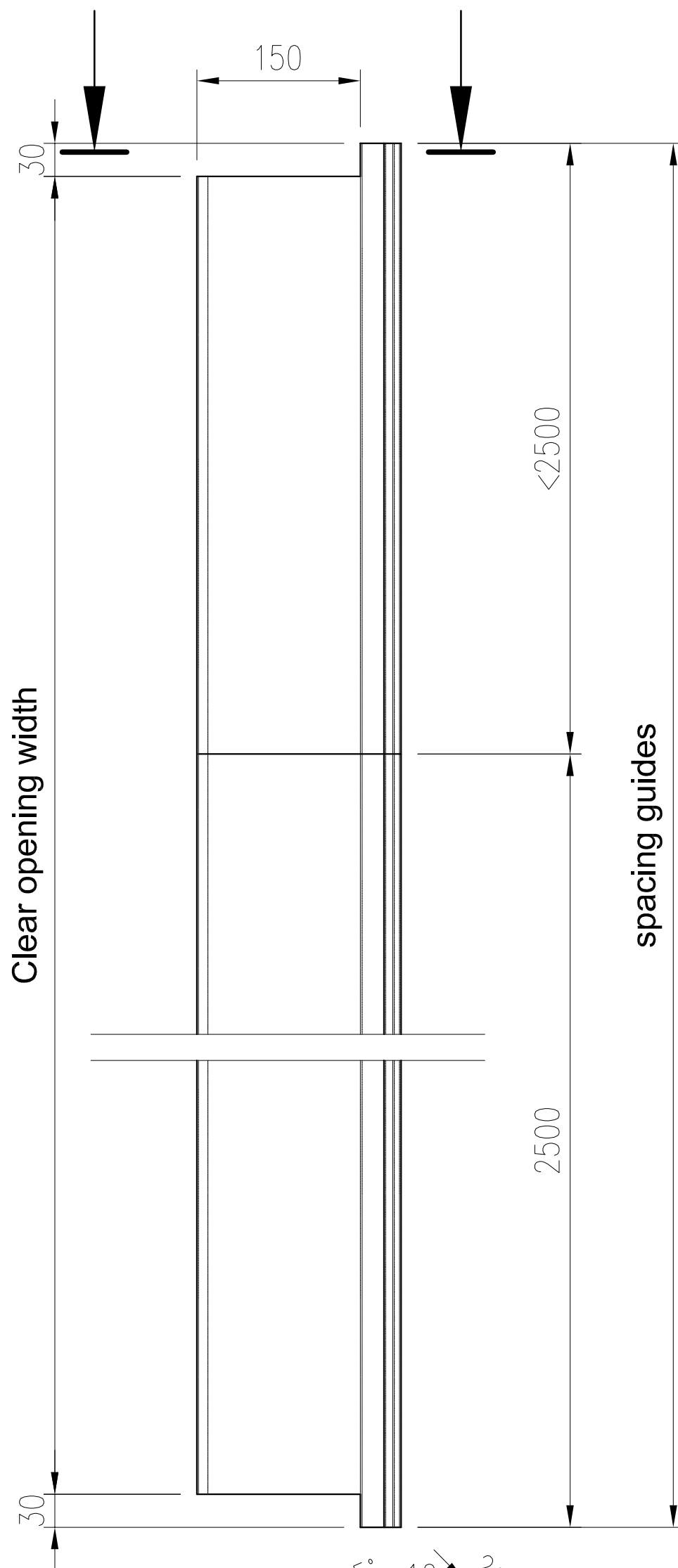
**M10x120**


**100**

**M10x72**



\*\*\* Drawing 3c \*\*\*



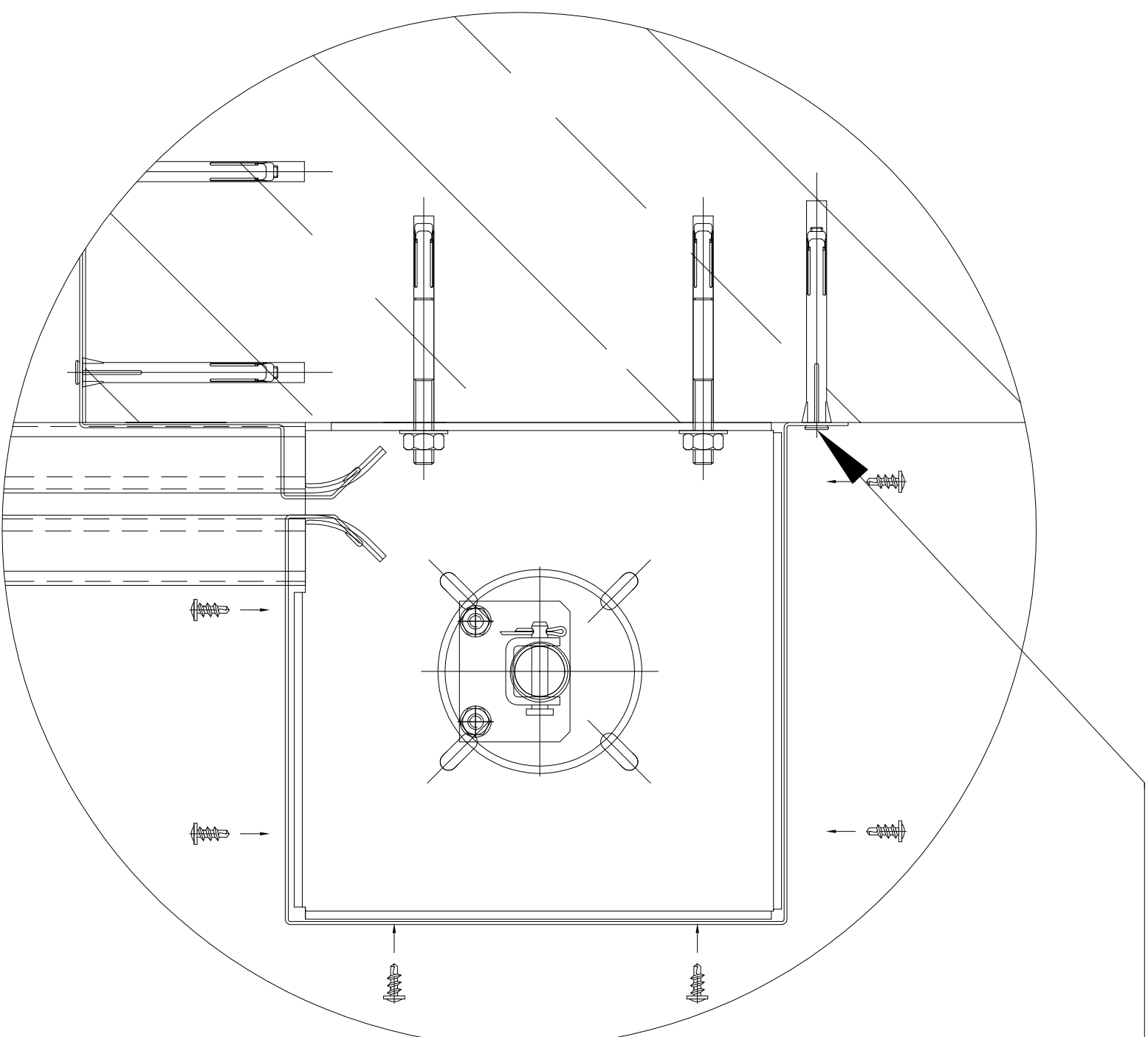
 *view*

*cutting of the bottom seal*

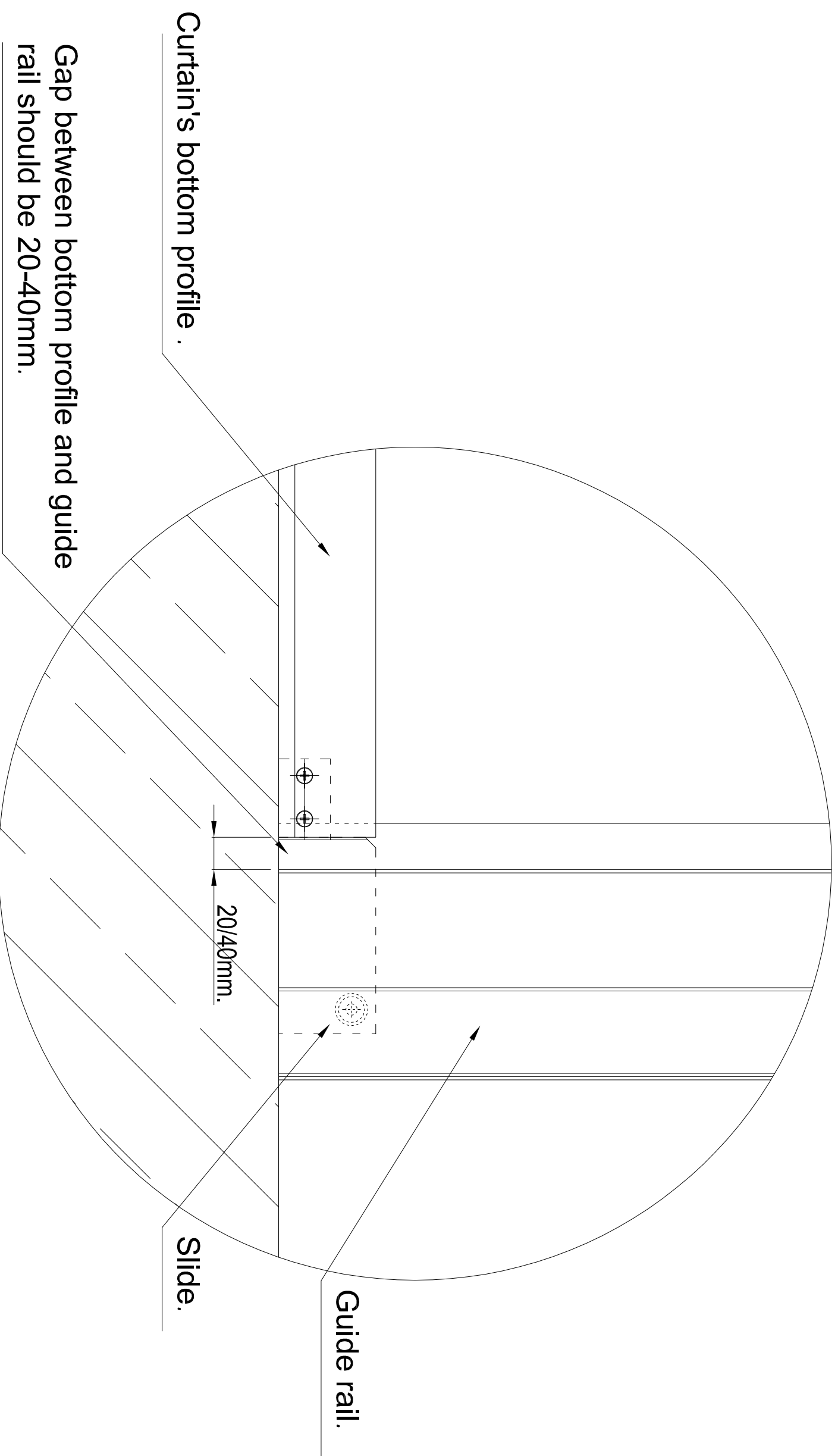
\*\*\* Drawing 3d \*\*\*



# M10x72



\*\*\* Drawing 4a \*\*\*  
Detail no. 2



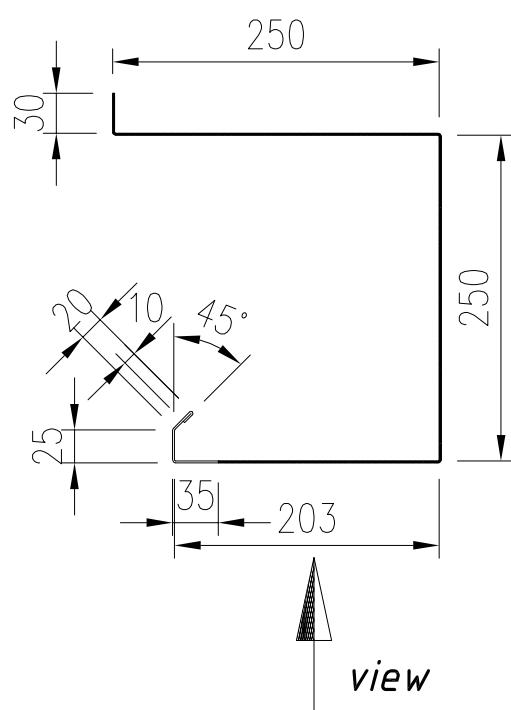
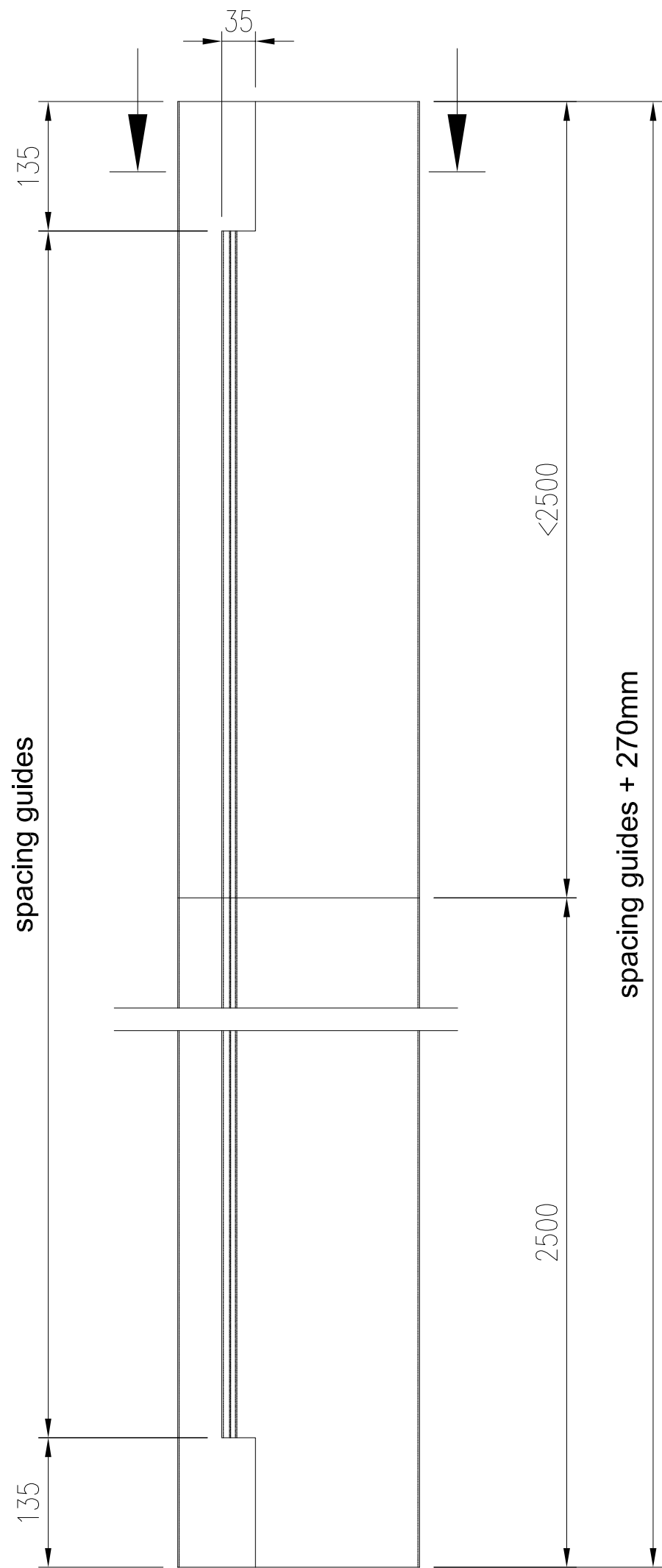
Curtain's bottom profile .

Gap between bottom profile and guide rail should be 20-40mm.

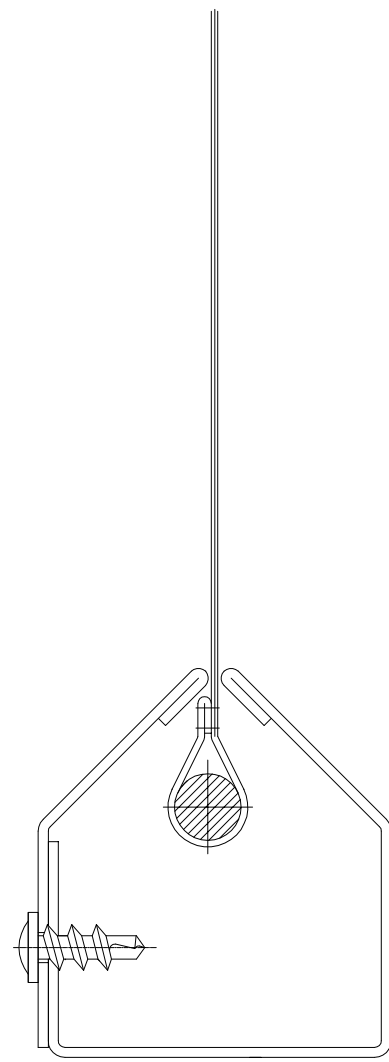
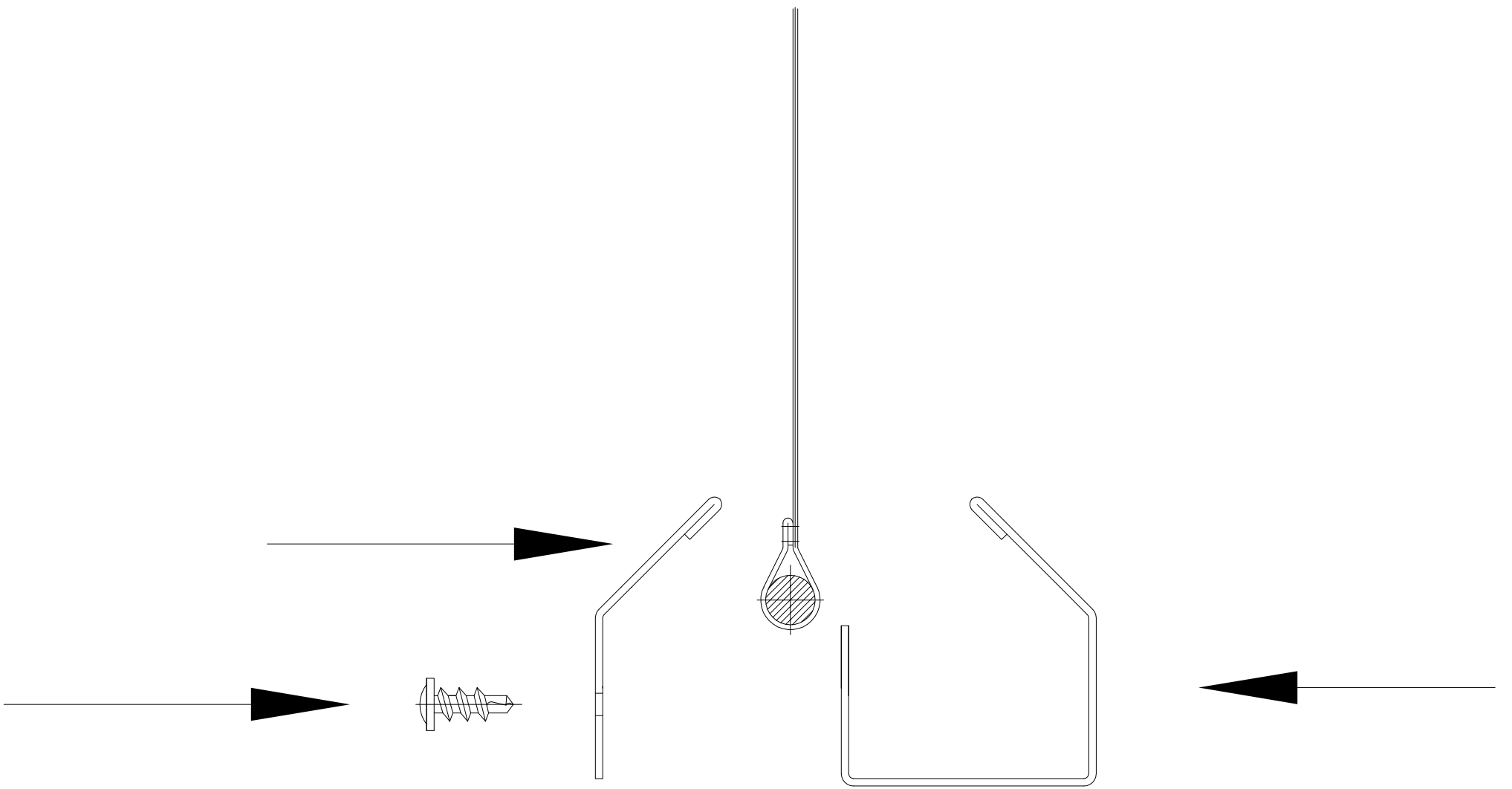
Slide.

Guide rail.

\*\*\* Drawing 4b \*\*\*  
Detail no. 3



\*\*\* Drawing no.4c \*\*\*  
*cutting of the top casing*



\*\*\* DRAWING 5 \*\*\*

*Bottom stripes installation - profiles connection*